

FITC Anti-HLA B7 antibody [BB7.1] ab33330

1 图像

概述

产品名称	FITC荧光Anti-HLA B7抗体[BB7.1]
描述	FITC荧光小鼠单克隆抗体[BB7.1] to HLA B7
宿主	Mouse
偶联物	FITC. Ex: 493nm, Em: 528nm
特异性	This antibody recognizes the HLA B7 antigen and does not cross react with HLA B27 or other related antigens.
经测试应用	适用于: Flow Cyt
种属反应性	与反应: Human, Cynomolgus monkey
免疫原	Full length protein corresponding to Human HLA B7. Papain solubilized HLA-B7 antigen
常规说明	<p>This antibody can be used to distinguish true HLA B27 positives from false HLA B27 positives (i.e. HLA B7 positive) in the investigation of diseases such as ankylosing spondylitis and anterior uveitis.</p> <p>The Life Science industry has been in the grips of a reproducibility crisis for a number of years. Abcam is leading the way in addressing this with our range of recombinant monoclonal antibodies and knockout edited cell lines for gold-standard validation. Please check that this product meets your needs before purchasing.</p> <p>If you have any questions, special requirements or concerns, please send us an inquiry and/or contact our Support team ahead of purchase. Recommended alternatives for this product can be found below, along with publications, customer reviews and Q&As</p>

性能

形式	Liquid
存放说明	Shipped at 4°C. Store at +4°C.
存储溶液	<p>pH: 7.40</p> <p>Preservative: 0.09% Sodium azide</p> <p>Constituents: PBS, 1% BSA</p>
纯度	Protein G purified
纯化说明	This antibody was purified from tissue culture supernatant.

Primary antibody说明	This antibody can be used to distinguish true HLA B27 positives from false HLA B27 positives (i.e. HLA B7 positive) in the investigation of diseases such as ankylosing spondylitis and anterior uveitis.
克隆	单克隆
克隆编号	BB7.1
同种型	IgG1

应用

The Abpromise guarantee **Abpromise™**承诺保证使用ab33330于以下的经测试应用

“应用说明”部分 下显示的仅为推荐的起始稀释度;实际最佳的稀释度/浓度应由使用者检定。

应用	Ab评论	说明
Flow Cyt		1/1 - 1/10. Use 10µl of the suggested working dilution to label 10 ⁶ cells or 100µl whole blood.

靶标

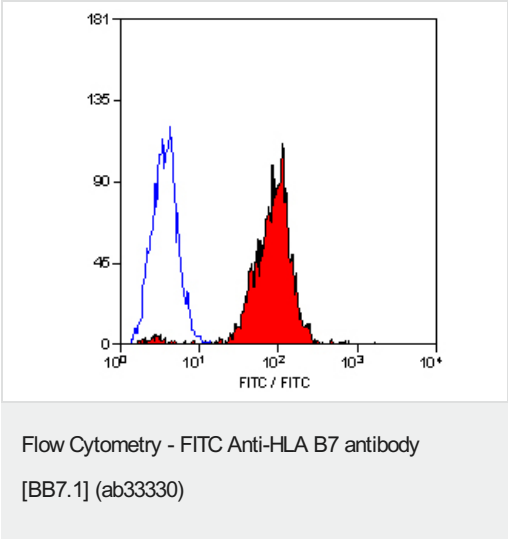
相关性

HLA B belongs to the HLA class I heavy chain paralogues. This class I molecule is a heterodimer consisting of a heavy chain and a light chain (beta 2 microglobulin). The heavy chain is anchored in the membrane. Class I molecules play a central role in the immune system by presenting peptides derived from the endoplasmic reticulum lumen. They are expressed in nearly all cells. The heavy chain is approximately 45 kDa. Hundreds of HLA B alleles have been described.

细胞定位

Cell Membrane, single pass type I membrane protein.

图片



Staining of human peripheral blood lymphocytes with ab33330

Please note: All products are "FOR RESEARCH USE ONLY. NOT FOR USE IN DIAGNOSTIC PROCEDURES"

Our Abpromise to you: Quality guaranteed and expert technical support

- Replacement or refund for products not performing as stated on the datasheet
- Valid for 12 months from date of delivery
- Response to your inquiry within 24 hours
- We provide support in Chinese, English, French, German, Japanese and Spanish
- Extensive multi-media technical resources to help you
- We investigate all quality concerns to ensure our products perform to the highest standards

If the product does not perform as described on this datasheet, we will offer a refund or replacement. For full details of the Abpromise, please visit <https://www.abcam.cn/abpromise> or contact our technical team.

Terms and conditions

- Guarantee only valid for products bought direct from Abcam or one of our authorized distributors