

FITC Anti-Glycophorin A + B antibody [HIR2] ab52452

1 图像

概述

产品名称	FITC 荧光Anti-Glycophorin A + B抗体[HIR2]
描述	FITC 荧光小鼠单克隆抗体[HIR2] to Glycophorin A + B
宿主	Mouse
偶联物	FITC. Ex: 493nm, Em: 528nm
特异性	ab52452 recognises N-terminal, homologous portion of glycophorins A (GPA) and B (GPB) which are single-pass membrane sialoglycoproteins expressed on red blood cells and erythroid precursor cells.
经测试应用	适用于: Flow Cyt
种属反应性	与反应: Human
免疫原	Synthetic peptide corresponding to Human Glycophorin A + B (N terminal).
阳性对照	Flow Cyt: A subset of erythrocytes in human peripheral blood.
常规说明	<p>ab52452 agglutinates untreated RBCs but it fails to agglutinate papain-treated cells, binds to GPA, but weakly to GPB. The antibody is useful in erythroid cell development studies, because HIR2 antigen is expressed on early erythroblasts, late erythroblasts, erythroblasts, mature erythrocytes and the cells of erythroid cell lines K562 and HEL, but not on all other cells (mature erythrocytes are characteristically CD235a positive and CD45 and CD71 negative).</p> <p>The Life Science industry has been in the grips of a reproducibility crisis for a number of years. Abcam is leading the way in addressing this with our range of recombinant monoclonal antibodies and knockout edited cell lines for gold-standard validation. Please check that this product meets your needs before purchasing.</p> <p>If you have any questions, special requirements or concerns, please send us an inquiry and/or contact our Support team ahead of purchase. Recommended alternatives for this product can be found below, along with publications, customer reviews and Q&As</p>

性能

形式	Liquid
存放说明	Shipped at 4°C. Store at +4°C.
存储溶液	<p>pH: 7.4</p> <p>Preservative: 0.097% Sodium azide</p> <p>Constituents: 0.2% BSA, PBS</p>

纯度	Protein G purified
纯化说明	Prior to conjugation, ab52452 was purified by Protein G affinity chromatography. After conjugation, it was purified by site exclusion chromatography. Purity >95% by SDS-PAGE.
Primary antibody说明	ab52452 agglutinates untreated RBCs but it fails to agglutinate papain-treated cells, binds to GPA, but weakly to GPB. The antibody is useful in erythroid cell development studies, because HIR2 antigen is expressed on early erythroblasts, late erythroblasts, erythroblasts, mature erythrocytes and the cells of erythroid cell lines K562 and HEL, but not on all other cells (mature erythrocytes are characteristically CD235a positive and CD45 and CD71 negative).
克隆	单克隆
克隆编号	HIR2
同种型	IgG2b

应用

The Abpromise guarantee **Abpromise™**承诺保证使用ab52452于以下的经测试应用

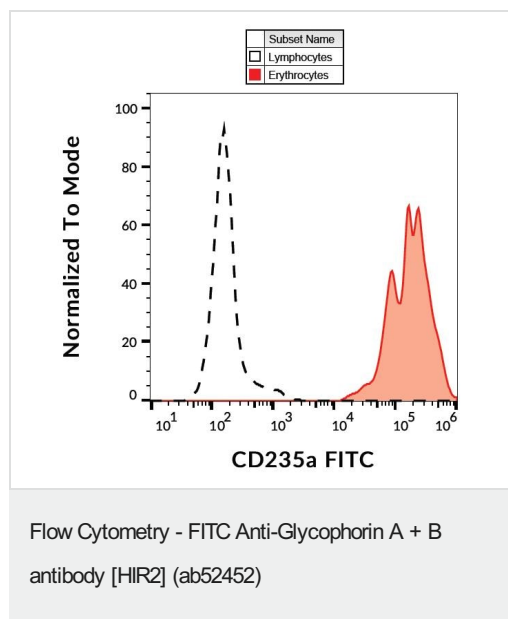
“应用说明”部分 下显示的仅为推荐的起始稀释度;实际最佳的稀释度/浓度应由使用者检定。

应用	Ab评论	说明
Flow Cyt		Use at an assay dependent concentration. 20 µl reagent / 100 µl of whole blood or 10 ⁶ cells in a suspension.

靶标

相关性	Glycophorins A (GYPA) and B (GYPB) are major sialoglycoproteins of the human erythrocyte membrane which bear the antigenic determinants for the MN and Ss blood groups. GYPA gene consists of 7 exons and has 97% sequence homology with GYPB from the 5' UTR to the coding sequence encoding the first 45 amino acids. GYPB accounts for S, s and U specificities. GPA and GPB provide the cells with a large mucin-like surface and it has been suggested this provides a barrier to cell fusion, so minimizing aggregation between red blood cells in the circulation. In addition to the M or N and S or s antigens, that commonly occur in all populations, about 40 related variant phenotypes have been identified. These variants include all the variants of the Miltenberger complex and several isoforms of Sta; also, Dantu, Sat, He, Mg, and deletion variants Ena, S-s-U- and Mk. Most of the variants are resulted from gene recombinations between GYPA and GYPB. These antigens are expressed on early erythroblasts, late erythroblasts, erythroblasts, mature erythrocytes and the cells of erythroid cell lines K562 and HEL, but not on all other cells (mature erythrocytes are characteristically CD235a positive and CD45 and CD71 negative).
细胞定位	Type I membrane protein.

图片



Flow cytometry analysis (surface staining) of human peripheral blood labeling CD235a with ab52452.

Please note: All products are "FOR RESEARCH USE ONLY. NOT FOR USE IN DIAGNOSTIC PROCEDURES"

Our Abpromise to you: Quality guaranteed and expert technical support

- Replacement or refund for products not performing as stated on the datasheet
- Valid for 12 months from date of delivery
- Response to your inquiry within 24 hours
- We provide support in Chinese, English, French, German, Japanese and Spanish
- Extensive multi-media technical resources to help you
- We investigate all quality concerns to ensure our products perform to the highest standards

If the product does not perform as described on this datasheet, we will offer a refund or replacement. For full details of the Abpromise, please visit <https://www.abcam.cn/abpromise> or contact our technical team.

Terms and conditions

- Guarantee only valid for products bought direct from Abcam or one of our authorized distributors