

### FITC Anti-F4/80 antibody [BM8] ab60343

**36 References**   **2 图像**

#### 概述

产品名称	FITC荧光Anti-F4/80抗体[BM8]
描述	FITC荧光大鼠单克隆抗体[BM8] to F4/80
宿主	Rat
偶联物	FITC. Ex: 493nm, Em: 528nm
经测试应用	适用于: Flow Cyt, ICC/IF
种属反应性	与反应: Mouse
免疫原	Tissue, cells or virus corresponding to Mouse F4/80. BALB/c macrophages obtained from 14-day-old bone marrow cell cultures.
阳性对照	Mouse macrophages and spleen cells.
常规说明	<p>This antibody is the only macrophage marker that is able to distinguish non-destructive from destructive inflammation processes in the pancreas. It is a unique histological marker of the progression from peri-insulitis to beta-cell destruction and diabetes in a mouse diabetes model.</p> <p>The Life Science industry has been in the grips of a reproducibility crisis for a number of years. Abcam is leading the way in addressing this with our range of recombinant monoclonal antibodies and knockout edited cell lines for gold-standard validation. Please check that this product meets your needs before purchasing.</p> <p>If you have any questions, special requirements or concerns, please send us an inquiry and/or contact our Support team ahead of purchase. Recommended alternatives for this product can be found below, along with publications, customer reviews and Q&amp;As</p>

#### 性能

形式	Liquid
存放说明	Shipped at 4°C. Store at 4°C (stable for up to 12 months). Store at +4°C. Store In the Dark.
存储溶液	<p>pH: 7.20</p> <p>Preservative: 0.09% Sodium azide</p> <p>Constituents: 0.1% Gelatin, 0.14% Monobasic dihydrogen sodium phosphate, 0.87% Sodium chloride</p>
纯度	Affinity purified
Primary antibody说明	This antibody is the only macrophage marker that is able to distinguish non-destructive from destructive inflammation processes in the pancreas. It is a unique histological marker of the

progression from peri-insulinitis to beta-cell destruction and diabetes in a mouse diabetes model.

克隆	单克隆
克隆编号	BM8
同种型	IgG2a

## 应用

**The Abpromise guarantee** **Abpromise™** 承诺保证使用ab60343于以下的经测试应用

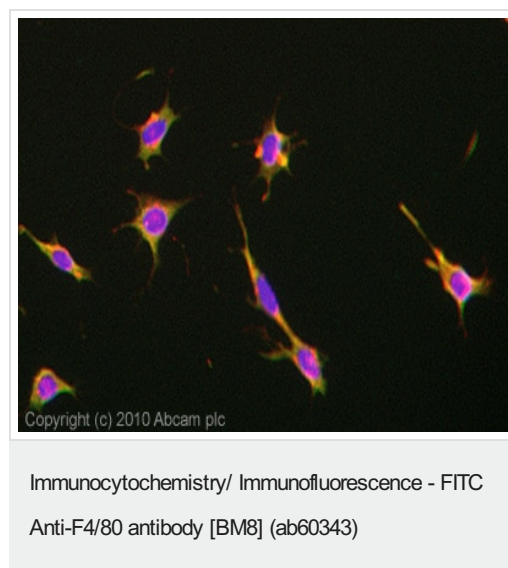
“应用说明”部分 下显示的仅为推荐的起始稀释度;实际最佳的稀释度/浓度应由使用者检定。

应用	Ab评论	说明
Flow Cyt		1/50 - 1/100. <b>ab18446</b> - Rat monoclonal IgG2a, is suitable for use as an isotype control with this antibody.
ICC/IF		Use a concentration of 1 µg/ml.

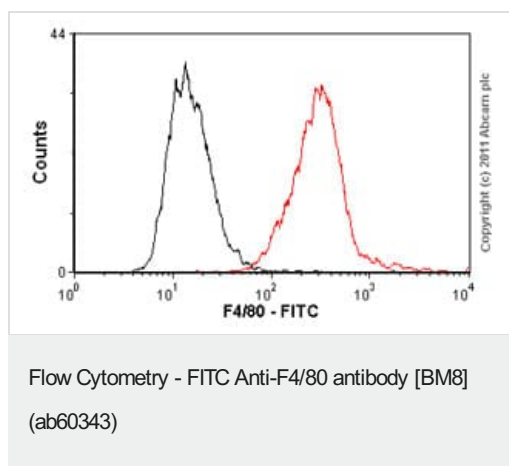
## 靶标

功能	Orphan receptor involved in cell adhesion and probably in cell-cell interactions specifically involving cells of the immune system. May play a role in regulatory T-cells (Treg) development.
组织特异性	Expression is restricted to eosinophils.
序列相似性	Belongs to the G-protein coupled receptor 2 family. Adhesion G-protein coupled receptor (ADGR) subfamily. Contains 6 EGF-like domains. Contains 1 GPS domain.
细胞定位	Cell membrane.

## 图片



ICC/IF image of ab60343 stained MEF cells. The cells were 4% PFA fixed (10 min) and then incubated in 1%BSA / 10% normal goat serum / 0.3M glycine in 0.1% PBS-Tween for 1h to permeabilise the cells and block non-specific protein-protein interactions. The cells were then incubated with the antibody (ab60343, 1µg/ml, FITC conjugated) overnight at +4°C. Alexa Fluor® 594 WGA was used to label plasma membranes (red) at a 1/200 dilution for 1h. DAPI was used to stain the cell nuclei (blue) at a concentration of 1.43µM.



Overlay histogram showing RAW 264.7 cells stained with ab60343 (red line). The cells were fixed with methanol (5 min) and incubated in 1x PBS / 10% normal goat serum / 0.3M glycine to block non-specific protein-protein interactions. The cells were then incubated with the antibody (ab60343, 1/100 dilution) for 30 min at 22°C. Isotype control antibody (black line) was rat IgG2a [aRTK2758] (**ab18450**, 2µg/1x10<sup>6</sup> cells) with secondary antibody DyLight® 488 goat anti-rat IgG (H+L) (**ab98386**) at 1/500 dilution for 30 min at 22°C. Acquisition of >5,000 events was performed. This antibody gave a minimal signal in RAW 264.7 cells fixed with methanol (5 min) used under the same conditions.

Please note that Abcam do not have data for use of this antibody on non-fixed cells. We welcome any customer feedback.

**Please note:** All products are "FOR RESEARCH USE ONLY. NOT FOR USE IN DIAGNOSTIC PROCEDURES"

### Our Abpromise to you: Quality guaranteed and expert technical support

- Replacement or refund for products not performing as stated on the datasheet
- Valid for 12 months from date of delivery
- Response to your inquiry within 24 hours
- We provide support in Chinese, English, French, German, Japanese and Spanish
- Extensive multi-media technical resources to help you
- We investigate all quality concerns to ensure our products perform to the highest standards

If the product does not perform as described on this datasheet, we will offer a refund or replacement. For full details of the Abpromise, please visit <https://www.abcam.cn/abpromise> or contact our technical team.

### Terms and conditions

- Guarantee only valid for products bought direct from Abcam or one of our authorized distributors