


FITC Anti-Cytokeratin 18 antibody [C-04] ab52459

[12 References](#) [3 图像](#)

概述

产品名称	FITC荧光Anti-Cytokeratin 18抗体[C-04]
描述	FITC荧光小鼠单克隆抗体[C-04] to Cytokeratin 18
宿主	Mouse
偶联物	FITC. Ex: 493nm, Em: 528nm
经测试应用	适用于: ICC, Flow Cyt (Intra)
种属反应性	与反应: Human 预测可用于: Mammals 
免疫原	Tissue, cells or virus corresponding to Human Cytokeratin 18. Cytoskeleton preparation of epidermal carcinoma cell line A431 Database link: P05783
阳性对照	ICC: HCT116 cells; Flow Cyt (Intra): HeLa cells.
常规说明	<p>The Life Science industry has been in the grips of a reproducibility crisis for a number of years. Abcam is leading the way in addressing this with our range of recombinant monoclonal antibodies and knockout edited cell lines for gold-standard validation. Please check that this product meets your needs before purchasing.</p> <p>If you have any questions, special requirements or concerns, please send us an inquiry and/or contact our Support team ahead of purchase. Recommended alternatives for this product can be found below, along with publications, customer reviews and Q&As</p>

性能

形式	Liquid
存放说明	Shipped at 4°C. Store at +4°C.
存储溶液	pH: 7.4 Preservative: 0.097% Sodium azide Constituents: 0.2% BSA, PBS
纯度	Protein A purified
纯化说明	Prior to conjugation, the antibody was purified by Protein A affinity chromatography. The purified antibody is conjugated with Fluorescein isothiocyanate (FITC) under optimum conditions. The reagent is free of unconjugated FITC. Purity >95% by SDS-PAGE.

克隆	单克隆
克隆编号	C-04
同种型	IgG1

应用

The Abpromise guarantee **Abpromise™**承诺保证使用ab52459于以下的经测试应用

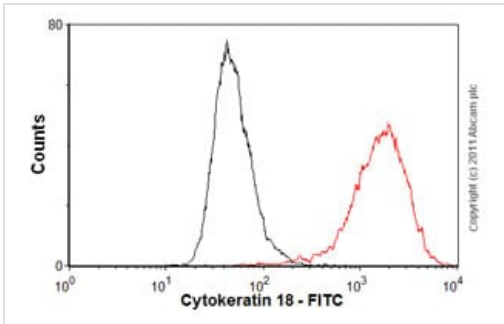
“应用说明”部分下显示的仅为推荐的起始稀释度;实际最佳的稀释度/浓度应由使用者检定。

应用	Ab评论	说明
ICC		Use a concentration of 5 µg/ml.
Flow Cyt (Intra)		Use a concentration of 1 - 2 µg/ml. ab91356 - Mouse monoclonal IgG1, is suitable for use as an isotype control with this antibody.

靶标

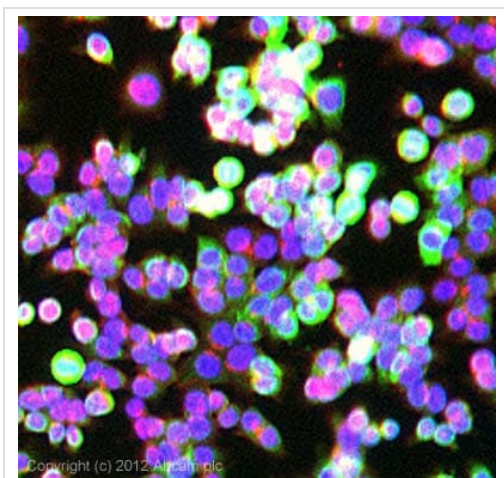
功能	Involved in the uptake of thrombin-antithrombin complexes by hepatic cells (By similarity). When phosphorylated, plays a role in filament reorganization. Involved in the delivery of mutated CFTR to the plasma membrane. Together with KRT8, is involved in interleukin-6 (IL-6)-mediated barrier protection.
组织特异性	Expressed in colon, placenta, liver and very weakly in exocervix. Increased expression observed in lymph nodes of breast carcinoma.
疾病相关	Defects in KRT18 are a cause of cirrhosis (CIRRH) [MIM:215600].
序列相似性	Belongs to the intermediate filament family.
翻译后修饰	Phosphorylation at Ser-34 increases during mitosis. Hyperphosphorylated at Ser-53 in diseased cirrhosis liver. Phosphorylation increases by IL-6. Proteolytically cleaved by caspases during epithelial cell apoptosis. Cleavage occurs at Asp-238 by either caspase-3, caspase-6 or caspase-7. O-glycosylated at multiple sites; glycans consist of single N-acetylglucosamine residues.
细胞定位	Cytoplasm > perinuclear region.

图片



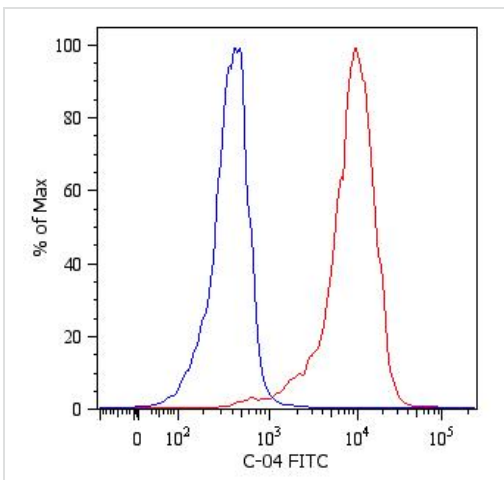
Flow Cytometry (Intracellular) - FITC Anti-Cytokeratin 18 antibody [C-04] (ab52459)

Overlay histogram showing intracellular staining of HeLa cells labeled with ab52459 (red line). The cells were fixed with 80% methanol (5 min) and then permeabilized with 0.1% PBS-Tween for 20 min. The cells were then incubated in 1x PBS / 10% normal goat serum / 0.3M glycine to block non-specific protein-protein interactions followed by the antibody (ab52459, 1 µg/1x10⁶ cells) for 30 min at 22°C. Isotype control antibody (black line) was mouse IgG1 (FITC) (2 µg/1x10⁶ cells) used under the same conditions. Acquisition of >5,000 events was performed. This antibody gave a positive signal in HeLa cells fixed with 4% paraformaldehyde (10 min)/permeabilized with 0.1% PBS-Tween for 20 min used under the same conditions.



Immunocytochemistry - FITC Anti-Cytokeratin 18 antibody [C-04] (ab52459)

ICC/IF image of ab52459 stained HCT116 cells. The cells were 4% formaldehyde fixed (10 min) and then incubated in 1% BSA / 10% normal goat serum / 0.3M glycine in 0.1% PBS-Tween for 1h to permeabilise the cells and block non-specific protein-protein interactions. The cells were then incubated with the antibody (ab52459, 5 µg/ml) overnight at +4°C. Alexa Fluor® 594 WGA was used to label plasma membranes (red) at a 1/200 dilution for 1h. DAPI was used to stain the cell nuclei (blue) at a concentration of 1.43 µM.



Flow Cytometry (Intracellular) - FITC Anti-Cytokeratin 18 antibody [C-04] (ab52459)

Flow cytometry (Intracellular) analysis HeLa (human cervix carcinoma cell line) cells labeling Cytokeratin 18 with ab52459 (red). Overlay with Isotype mouse IgG1 control FITC antibody (blue).

Please note: All products are "FOR RESEARCH USE ONLY. NOT FOR USE IN DIAGNOSTIC PROCEDURES"

Our Abpromise to you: Quality guaranteed and expert technical support

- Replacement or refund for products not performing as stated on the datasheet
- Valid for 12 months from date of delivery
- Response to your inquiry within 24 hours

- We provide support in Chinese, English, French, German, Japanese and Spanish
- Extensive multi-media technical resources to help you
- We investigate all quality concerns to ensure our products perform to the highest standards

If the product does not perform as described on this datasheet, we will offer a refund or replacement. For full details of the Abpromise, please visit <https://www.abcam.cn/abpromise> or contact our technical team.

Terms and conditions

- Guarantee only valid for products bought direct from Abcam or one of our authorized distributors