

FITC Anti-CD80 antibody [16-10A1] ab95550

1 图像

概述

产品名称	FITC荧光Anti-CD80抗体[16-10A1]
描述	FITC荧光亚美尼亚仓鼠单克隆抗体[16-10A1] to CD80
宿主	Armenian hamster
偶联物	FITC. Ex: 493nm, Em: 528nm
经测试应用	适用于: Flow Cyt
种属反应性	与反应: Mouse
免疫原	CHO cell line stably transfected with mouse B7 (Cd80) cDNA
阳性对照	Flow Cyt: C57Bl/6 splenocytes
常规说明	<p>The Life Science industry has been in the grips of a reproducibility crisis for a number of years. Abcam is leading the way in addressing this with our range of recombinant monoclonal antibodies and knockout edited cell lines for gold-standard validation. Please check that this product meets your needs before purchasing.</p> <p>If you have any questions, special requirements or concerns, please send us an inquiry and/or contact our Support team ahead of purchase. Recommended alternatives for this product can be found below, along with publications, customer reviews and Q&As</p>

性能

形式	Liquid
存放说明	Shipped at 4°C. Store at +4°C short term (1-2 weeks). Upon delivery aliquot. Store at +4°C. Do Not Freeze.
存储溶液	<p>pH: 7.20</p> <p>Preservative: 0.09% Sodium azide</p> <p>Constituents: 0.1% Gelatin, 0.87% Sodium chloride, 0.142% Monobasic dihydrogen sodium phosphate</p>
纯度	Affinity purified
克隆	单克隆
克隆编号	16-10A1
同种型	IgG

应用

The Abpromise guarantee **Abpromise™**承诺保证使用ab95550于以下的经测试应用

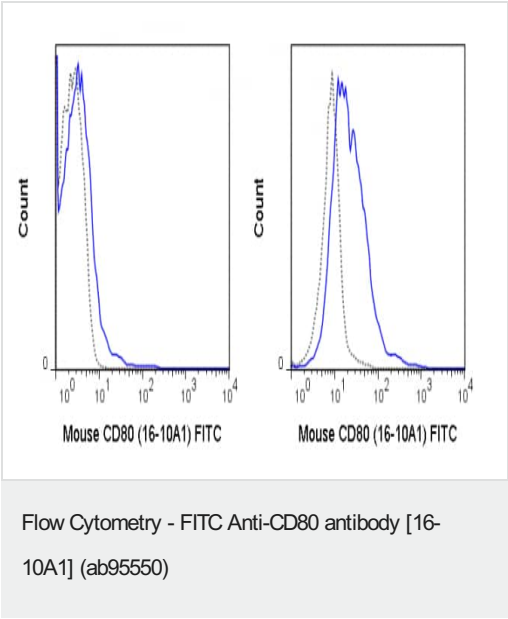
“应用说明”部分 下显示的仅为推荐的起始稀释度;实际最佳的稀释度/浓度应由使用者检定。

应用	Ab评论	说明
Flow Cyt		Use at an assay dependent concentration.

靶标

功能	Involved in the costimulatory signal essential for T-lymphocyte activation. T-cell proliferation and cytokine production is induced by the binding of CD28 or CTLA-4 to this receptor.
组织特异性	Expressed on activated B-cells, macrophages and dendritic cells.
序列相似性	Contains 1 Ig-like C2-type (immunoglobulin-like) domain. Contains 1 Ig-like V-type (immunoglobulin-like) domain.
细胞定位	Membrane.

图片



C57Bl/6 splenocytes were unstimulated (left panel) or stimulated for 3 days with LPS (right panel) and stained with 0.25 ug FITC Anti-Mouse CD80 (35-0801) (solid line) or 0.25 ug FITC Armenian Hamster isotype control (dashed line).

Please note: All products are "FOR RESEARCH USE ONLY. NOT FOR USE IN DIAGNOSTIC PROCEDURES"

Our Abpromise to you: Quality guaranteed and expert technical support

- Replacement or refund for products not performing as stated on the datasheet
- Valid for 12 months from date of delivery
- Response to your inquiry within 24 hours
- We provide support in Chinese, English, French, German, Japanese and Spanish

- Extensive multi-media technical resources to help you
- We investigate all quality concerns to ensure our products perform to the highest standards

If the product does not perform as described on this datasheet, we will offer a refund or replacement. For full details of the Abpromise, please visit <https://www.abcam.cn/abpromise> or contact our technical team.

Terms and conditions

- Guarantee only valid for products bought direct from Abcam or one of our authorized distributors