

FITC Anti-CD62L antibody [DREG-56] ab95140

[6 References](#) [2 图像](#)

概述

产品名称	FITC荧光Anti-CD62L抗体[DREG-56]
描述	FITC荧光小鼠单克隆抗体[DREG-56] to CD62L
宿主	Mouse
偶联物	FITC. Ex: 493nm, Em: 528nm
经测试应用	适用于: Flow Cyt
种属反应性	与反应: Human
免疫原	Tissue, cells or virus corresponding to Human CD62L. PMA-activated Human peripheral blood leukocytes
阳性对照	Flow Cyt: Neutrophil granulocytes in human peripheral whole blood.
常规说明	Free of unconjugated FITC. The Life Science industry has been in the grips of a reproducibility crisis for a number of years. Abcam is leading the way in addressing this with our range of recombinant monoclonal antibodies and knockout edited cell lines for gold-standard validation. Please check that this product meets your needs before purchasing. If you have any questions, special requirements or concerns, please send us an inquiry and/or contact our Support team ahead of purchase. Recommended alternatives for this product can be found below, along with publications, customer reviews and Q&As

性能

形式	Liquid
存放说明	Shipped at 4°C. Store at +4°C.
存储溶液	pH: 7.4 Preservative: 0.097% Sodium azide Constituents: 0.2% BSA, PBS
纯度	Size exclusion
克隆	单克隆
克隆编号	DREG-56
同种型	IgG1

应用

The Abpromise guarantee **Abpromise™** 承诺保证使用 ab95140 于以下的经测试应用

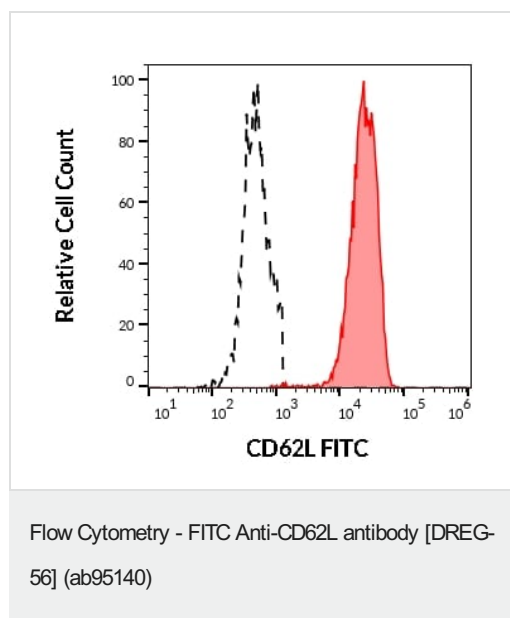
“应用说明”部分 下显示的仅为推荐的起始稀释度;实际最佳的稀释度/浓度应由使用者检定。

应用	Ab评论	说明
Flow Cyt		Use at an assay dependent concentration. 20 µl reagent / 100 µl of whole blood or 10 ⁶ cells in a suspension

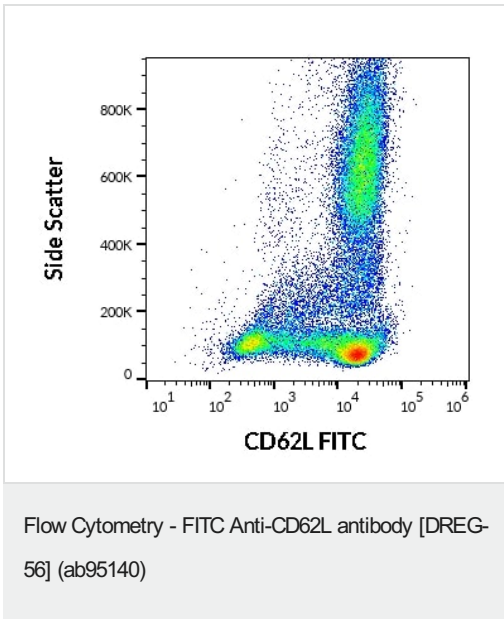
靶标

功能	Cell surface adhesion protein. Mediates the adherence of lymphocytes to endothelial cells of high endothelial venules in peripheral lymph nodes. Promotes initial tethering and rolling of leukocytes in endothelia.
组织特异性	Expressed in B cell lines and T lymphocytes.
序列相似性	Belongs to the selectin/LECAM family. Contains 1 C-type lectin domain. Contains 1 EGF-like domain. Contains 2 Sushi (CCP/SCR) domains.
细胞定位	Membrane.

图片



Flow Cytometry analysis (surface staining) of CD62L in human peripheral whole blood stained using ab95140 at (20 µL reagent/100 µL of peripheral whole blood). CD62L positive human neutrophil granulocytes (red-filled) and CD62L negative lymphocytes (black-dashed).



Flow cytometry surface staining of CD62L in human peripheral blood using ab95140 at (20 μ L reagent/100 μ L of peripheral whole blood).

Please note: All products are "FOR RESEARCH USE ONLY. NOT FOR USE IN DIAGNOSTIC PROCEDURES"

Our Abpromise to you: Quality guaranteed and expert technical support

- Replacement or refund for products not performing as stated on the datasheet
- Valid for 12 months from date of delivery
- Response to your inquiry within 24 hours
- We provide support in Chinese, English, French, German, Japanese and Spanish
- Extensive multi-media technical resources to help you
- We investigate all quality concerns to ensure our products perform to the highest standards

If the product does not perform as described on this datasheet, we will offer a refund or replacement. For full details of the Abpromise, please visit <https://www.abcam.cn/abpromise> or contact our technical team.

Terms and conditions

- Guarantee only valid for products bought direct from Abcam or one of our authorized distributors