

FITC Anti-CD58 antibody [MEM-63] ab26006

1 图像

概述

产品名称	FITC荧光Anti-CD58抗体[MEM-63]
描述	FITC荧光小鼠单克隆抗体[MEM-63] to CD58
宿主	Mouse
偶联物	FITC. Ex: 493nm, Em: 528nm
经测试应用	适用于: Flow Cyt
种属反应性	与反应: Human
免疫原	Tissue, cells or virus corresponding to CD58. NALM-6 human pre-B cell line
阳性对照	Flow Cyt: Human peripheral blood cells.
常规说明	<p>The purified antibody is conjugated with Fluorescein isothiocyanate (FITC) under optimum conditions. The reagent is free of unconjugated FITC.</p> <p>The Life Science industry has been in the grips of a reproducibility crisis for a number of years. Abcam is leading the way in addressing this with our range of recombinant monoclonal antibodies and knockout edited cell lines for gold-standard validation. Please check that this product meets your needs before purchasing.</p> <p>If you have any questions, special requirements or concerns, please send us an inquiry and/or contact our Support team ahead of purchase. Recommended alternatives for this product can be found below, along with publications, customer reviews and Q&As</p>

性能

形式	Liquid
存放说明	Shipped at 4°C. Store at +4°C. Store In the Dark.
存储溶液	<p>pH: 8.0</p> <p>Preservative: 0.0975% Sodium azide</p> <p>Constituent: Tris buffered saline</p>
纯度	IgG fraction
纯化说明	The purified antibody is conjugated with Fluorescein isothiocyanate (FITC) under optimum conditions. The reagent is free of unconjugated FITC and adjusted for direct use.
克隆	单克隆
克隆编号	MEM-63

同种型IgG1

应用

The Abpromise guarantee **Abpromise™**承诺保证使用ab26006于以下的经测试应用

“应用说明”部分 下显示的仅为推荐的起始稀释度;实际最佳的稀释度/浓度应由使用者检定。

应用	Ab评论	说明
Flow Cyt		Use 20µl for 10 ⁶ cells. Or 100 µl of whole blood. ab91356 - Mouse monoclonal IgG1, is suitable for use as an isotype control with this antibody.

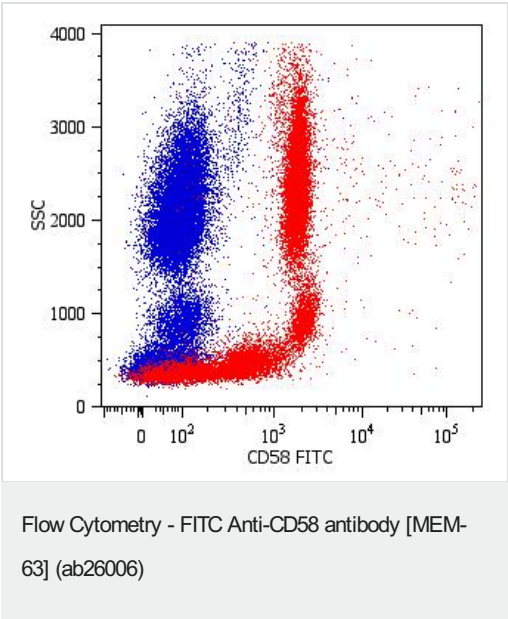
靶标

功能 Ligand of the T-lymphocyte CD2 glycoprotein. This interaction is important in mediating thymocyte interactions with thymic epithelial cells, antigen-independent and -dependent interactions of T-lymphocytes with target cells and antigen-presenting cells and the T-lymphocyte rosetting with erythrocytes. In addition, the LFA-3/CD2 interaction may prime response by both the CD2+ and LFA-3+ cells.

序列相似性 Contains 1 Ig-like C2-type (immunoglobulin-like) domain.

细胞定位 Cell membrane.

图片



Flow Cytometric analysis of human peripheral blood cells labeling CD58 with ab26006. Surface staining.

Please note: All products are "FOR RESEARCH USE ONLY. NOT FOR USE IN DIAGNOSTIC PROCEDURES"

Our Abpromise to you: Quality guaranteed and expert technical support

- Replacement or refund for products not performing as stated on the datasheet
- Valid for 12 months from date of delivery
- Response to your inquiry within 24 hours

- We provide support in Chinese, English, French, German, Japanese and Spanish
- Extensive multi-media technical resources to help you
- We investigate all quality concerns to ensure our products perform to the highest standards

If the product does not perform as described on this datasheet, we will offer a refund or replacement. For full details of the Abpromise, please visit <https://www.abcam.cn/abpromise> or contact our technical team.

Terms and conditions

- Guarantee only valid for products bought direct from Abcam or one of our authorized distributors