

FITC Anti-CD43 antibody [MEM-59] ab21853

[1 Abreviews](#) [2 References](#) [2 图像](#)

概述

产品名称	FITC荧光Anti-CD43抗体[MEM-59]
描述	FITC荧光小鼠单克隆抗体[MEM-59] to CD43
宿主	Mouse
偶联物	FITC. Ex: 493nm, Em: 528nm
经测试应用	适用于: Flow Cyt
种属反应性	与反应: Human
免疫原	Tissue, cells or virus corresponding to Human CD43. T lymphocytes
常规说明	<p>The purified antibody is conjugated with Fluorescein isothiocyanate (FITC) under optimum conditions. The reagent is free of unconjugated FITC and adjusted for direct use.</p> <p>The Life Science industry has been in the grips of a reproducibility crisis for a number of years. Abcam is leading the way in addressing this with our range of recombinant monoclonal antibodies and knockout edited cell lines for gold-standard validation. Please check that this product meets your needs before purchasing.</p> <p>If you have any questions, special requirements or concerns, please send us an inquiry and/or contact our Support team ahead of purchase. Recommended alternatives for this product can be found below, along with publications, customer reviews and Q&As</p>

性能

形式	Liquid
存放说明	Shipped at 4°C. Store at +4°C.
存储溶液	pH: 7.40 Preservative: 0.097% Sodium azide Constituents: PBS, BSA
纯度	Protein G purified
克隆	单克隆
克隆编号	MEM-59
同种型	IgG1

The Abpromise guarantee **Abpromise™**承诺保证使用ab21853于以下的经测试应用

“应用说明”部分 下显示的仅为推荐的起始稀释度;实际最佳的稀释度/浓度应由使用者检定。

应用	Ab评论	说明
Flow Cyt		Use 1µl for 10 ⁶ cells. ab91356 - Mouse monoclonal IgG1, is suitable for use as an isotype control with this antibody.

靶标**功能**

One of the major glycoproteins of thymocytes and T lymphocytes. Plays a role in the physicochemical properties of the T-cell surface and in lectin binding. Presents carbohydrate ligands to selectins. Has an extended rodlike structure that could protrude above the glycocalyx of the cell and allow multiple glycan chains to be accessible for binding. Is a counter receptor for SN/Siglec-1 (By similarity). During T-cell activation is actively removed from the T-cell-APC (antigen-presenting cell) contact site thus suggesting a negative regulatory role in adaptive immune response.

组织特异性

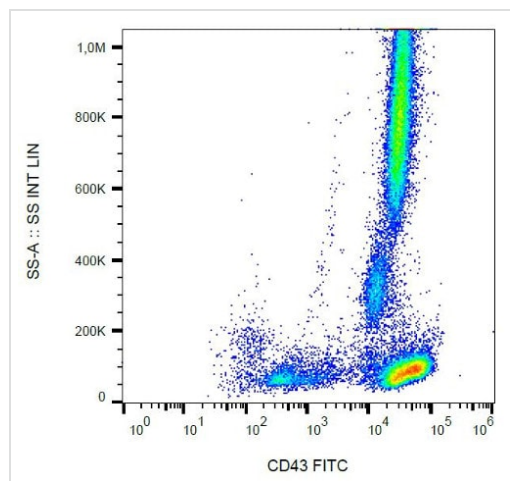
Cell surface of thymocytes, T-lymphocytes, neutrophils, plasma cells and myelomas.

翻译后修饰

Glycosylated; has a high content of sialic acid and O-linked carbohydrate structures.

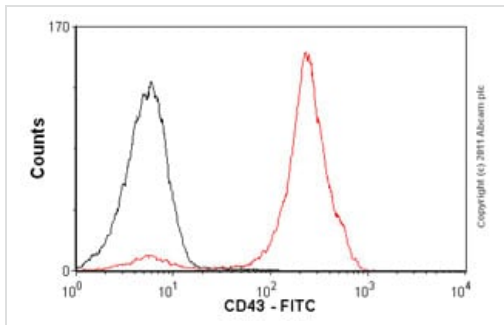
细胞定位

Membrane.

图片

Flow Cytometry analysis of human peripheral blood cells labeling CD43 with Anti-CD43 antibody [MEM-59] (FITC) (ab21853).

Flow Cytometry - FITC Anti-CD43 antibody [MEM-59] (ab21853)



Flow Cytometry - FITC Anti-CD43 antibody [MEM-59] (ab21853)

Overlay histogram showing peripheral blood lymphocytes stained with ab21853 (red line). The cells incubated in 1x PBS / 10% normal goat serum / 0.3M glycine to block non-specific protein-protein interactions. The cells were then incubated with the antibody (ab21853, 0.5 $\mu\text{g}/1 \times 10^6$ cells) for 30 min at 22°C. Isotype control antibody (black line) was mouse IgG1 FITC (2 $\mu\text{g}/1 \times 10^6$ cells) for 30 min at 22°C. Acquisition of >5,000 events was performed.

Please note: All products are "FOR RESEARCH USE ONLY. NOT FOR USE IN DIAGNOSTIC PROCEDURES"

Our Abpromise to you: Quality guaranteed and expert technical support

- Replacement or refund for products not performing as stated on the datasheet
- Valid for 12 months from date of delivery
- Response to your inquiry within 24 hours
- We provide support in Chinese, English, French, German, Japanese and Spanish
- Extensive multi-media technical resources to help you
- We investigate all quality concerns to ensure our products perform to the highest standards

If the product does not perform as described on this datasheet, we will offer a refund or replacement. For full details of the Abpromise, please visit <https://www.abcam.cn/abpromise> or contact our technical team.

Terms and conditions

- Guarantee only valid for products bought direct from Abcam or one of our authorized distributors