

# FITC Anti-CD42b antibody [AK2] ab30401

[1 References](#) [1 图像](#)

### 概述

<b>产品名称</b>	FITC荧光Anti-CD42b抗体[AK2]
<b>描述</b>	FITC荧光小鼠单克隆抗体[AK2] to CD42b
<b>宿主</b>	Mouse
<b>偶联物</b>	FITC. Ex: 493nm, Em: 528nm
<b>经测试应用</b>	<b>适用于:</b> Flow Cyt
<b>种属反应性</b>	<b>与反应:</b> Human
<b>免疫原</b>	Tissue, cells or virus corresponding to Human CD42b. Human platelet glycoproteins
<b>表位</b>	Epitope recognized by the antibody has been mapped to the first leucine rich repeat of CD42b (residues 36-59).
<b>阳性对照</b>	Human peripheral blood platelets
<b>常规说明</b>	

Clone AK2 has been reported to block the binding of von Willebrand Factor (VWF) to platelets.

The Life Science industry has been in the grips of a reproducibility crisis for a number of years. Abcam is leading the way in addressing this with our range of recombinant monoclonal antibodies and knockout edited cell lines for gold-standard validation. Please check that this product meets your needs before purchasing.

If you have any questions, special requirements or concerns, please send us an inquiry and/or contact our Support team ahead of purchase. Recommended alternatives for this product can be found below, along with publications, customer reviews and Q&As

### 性能

<b>形式</b>	Liquid
<b>存放说明</b>	Shipped at 4°C. Store at +4°C.
<b>存储溶液</b>	pH: 7.40 Preservative: 0.09% Sodium azide Constituents: PBS, 1% BSA
<b>纯度</b>	Protein G purified
<b>Primary antibody说明</b>	Clone AK2 has been reported to block the binding of von Willebrand Factor (VWF) to platelets.
<b>克隆</b>	单克隆

克隆编号 AK2

同种型 IgG1

## 应用

**The Abpromise guarantee** **Abpromise™**承诺保证使用ab30401于以下的经测试应用

“应用说明”部分 下显示的仅为推荐的起始稀释度;实际最佳的稀释度/浓度应由使用者检定。

应用	Ab评论	说明
Flow Cyt		Use at an assay dependent concentration. Use neat - 1/10. Use 10µl of the suggested working dilution to label 100µl whole blood.

## 靶标

**功能** GP-Ib, a surface membrane protein of platelets, participates in the formation of platelet plugs by binding to the A1 domain of vWF, which is already bound to the subendothelium.

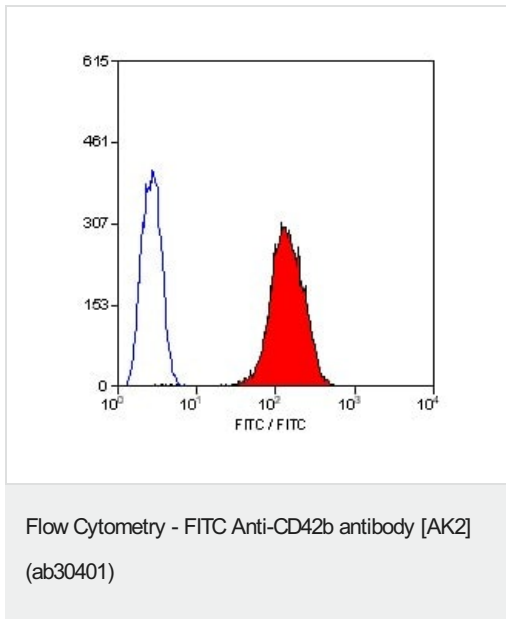
**疾病相关** Non-arteritic anterior ischemic optic neuropathy  
Bernard-Soulier syndrome  
Bernard-Soulier syndrome A2, autosomal dominant  
Pseudo-von Willebrand disease

**序列相似性** Contains 7 LRR (leucine-rich) repeats.  
Contains 1 LRRCT domain.  
Contains 1 LRRNT domain.

**翻译后修饰** Glycocalicin, which is approximately coextensive with the extracellular part of the molecule, is cleaved off by calpain during platelet lysis.

**细胞定位** Membrane.

## 图片



FACS analysis of CD42b expressing cells in human peripheral blood platelets using ab30401.

**Please note:** All products are "FOR RESEARCH USE ONLY. NOT FOR USE IN DIAGNOSTIC PROCEDURES"

### Our Abpromise to you: Quality guaranteed and expert technical support

- Replacement or refund for products not performing as stated on the datasheet
- Valid for 12 months from date of delivery
- Response to your inquiry within 24 hours
- We provide support in Chinese, English, French, German, Japanese and Spanish
- Extensive multi-media technical resources to help you
- We investigate all quality concerns to ensure our products perform to the highest standards

If the product does not perform as described on this datasheet, we will offer a refund or replacement. For full details of the Abpromise, please visit <https://www.abcam.cn/abpromise> or contact our technical team.

### Terms and conditions

- Guarantee only valid for products bought direct from Abcam or one of our authorized distributors