

FITC Anti-CD34 antibody [4H11[APG]] ab18227

[9 References](#) [1 图像](#)

概述

产品名称	FITC荧光Anti-CD34抗体[4H11[APG]]
描述	FITC荧光小鼠单克隆抗体[4H11[APG]] to CD34
宿主	Mouse
偶联物	FITC. Ex: 493nm, Em: 528nm
经测试应用	适用于: Flow Cyt
种属反应性	与反应: Human
免疫原	Tissue, cells or virus corresponding to Human CD34. Permanent human cell line derived from peripheral leucocytes of a patient suffering from chronic myeloid leukaemia
表位	Class III epitope on CD34 antigen.
阳性对照	Human blood cells.
常规说明	<p>The Life Science industry has been in the grips of a reproducibility crisis for a number of years. Abcam is leading the way in addressing this with our range of recombinant monoclonal antibodies and knockout edited cell lines for gold-standard validation. Please check that this product meets your needs before purchasing.</p> <p>If you have any questions, special requirements or concerns, please send us an inquiry and/or contact our Support team ahead of purchase. Recommended alternatives for this product can be found below, along with publications, customer reviews and Q&As</p>

性能

形式	Liquid
存放说明	Shipped at 4°C. Store at +4°C.
存储溶液	pH: 7.40 Preservative: 0.097% Sodium azide Constituents: PBS, BSA
纯化说明	Purified
克隆	单克隆
克隆编号	4H11[APG]
同种型	IgG1

应用

The Abpromise guarantee **Abpromise™** 承诺保证使用 ab18227 于以下的经测试应用

“应用说明”部分 下显示的仅为推荐的起始稀释度;实际最佳的稀释度/浓度应由使用者检定。

应用	Ab评论	说明
Flow Cyt		

应用说明

Flow Cyt: Use 20 µl reagent / 100 µl sample.

Not tested in other applications.

Optimal dilutions/concentrations should be determined by the end user.

靶标

功能

Possible adhesion molecule with a role in early hematopoiesis by mediating the attachment of stem cells to the bone marrow extracellular matrix or directly to stromal cells. Could act as a scaffold for the attachment of lineage specific glycans, allowing stem cells to bind to lectins expressed by stromal cells or other marrow components. Presents carbohydrate ligands to selectins.

组织特异性

Selectively expressed on hematopoietic progenitor cells and the small vessel endothelium of a variety of tissues.

序列相似性

Belongs to the CD34 family.

发展阶段

On early hematopoietic progenitor cells.

翻译后修饰

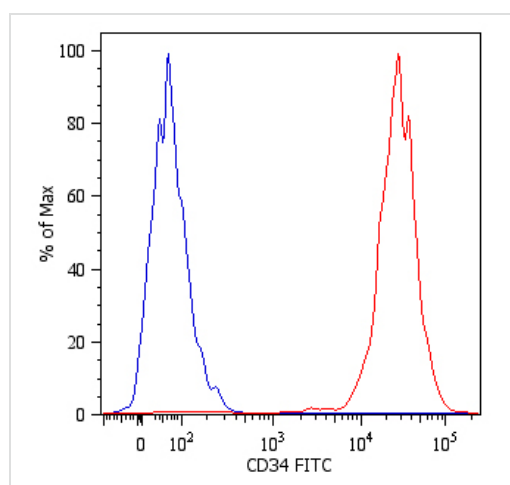
Highly glycosylated.

Phosphorylated on serine residues by PKC.

细胞定位

Membrane.

图片



Surface staining of Kg-1a human acute myelogenous leukemia cell line with anti-human CD34 (4H11[APG]) FITC (ab18227). Total viable cells were used for analysis.

ab18227 was used at a recommended dilution of 2 µg/ml.

Flow Cytometry - FITC Anti-CD34 antibody
[4H11[APG]] (ab18227)

Please note: All products are "FOR RESEARCH USE ONLY. NOT FOR USE IN DIAGNOSTIC PROCEDURES"

Our Abpromise to you: Quality guaranteed and expert technical support

- Replacement or refund for products not performing as stated on the datasheet
- Valid for 12 months from date of delivery
- Response to your inquiry within 24 hours

- We provide support in Chinese, English, French, German, Japanese and Spanish
- Extensive multi-media technical resources to help you
- We investigate all quality concerns to ensure our products perform to the highest standards

If the product does not perform as described on this datasheet, we will offer a refund or replacement. For full details of the Abpromise, please visit <https://www.abcam.cn/abpromise> or contact our technical team.

Terms and conditions

- Guarantee only valid for products bought direct from Abcam or one of our authorized distributors