


FITC Anti-CD33 antibody [WM53] ab234216

1 图像

概述

产品名称	FITC荧光Anti-CD33抗体[WM53]
描述	FITC荧光小鼠单克隆抗体[WM53] to CD33
宿主	Mouse
偶联物	FITC. Ex: 493nm, Em: 528nm
经测试应用	适用于: Flow Cyt
种属反应性	与反应: Human 预测可用于: Non human primates 
免疫原	Tissue, cells or virus corresponding to CD33. (Human AML cells).
阳性对照	Flow Cytometry: Human peripheral blood.
常规说明	<p>The Life Science industry has been in the grips of a reproducibility crisis for a number of years. Abcam is leading the way in addressing this with our range of recombinant monoclonal antibodies and knockout edited cell lines for gold-standard validation. Please check that this product meets your needs before purchasing.</p> <p>If you have any questions, special requirements or concerns, please send us an inquiry and/or contact our Support team ahead of purchase. Recommended alternatives for this product can be found below, along with publications, customer reviews and Q&As</p>

性能

形式	Liquid
存放说明	Shipped at 4°C. Store at +4°C. Store In the Dark.
存储溶液	pH: 7.40 Preservative: 0.0975% Sodium azide Constituent: PBS
纯度	Size exclusion
纯化说明	ab234216 is conjugated with Fluorescein isothiocyanate (FITC) under optimum conditions. The reagent is free of unconjugated FITC and adjusted for direct use.
克隆	单克隆
克隆编号	WM53
同种型	IgG1

应用

The Abpromise guarantee **Abpromise™**承诺保证使用ab234216于以下的经测试应用

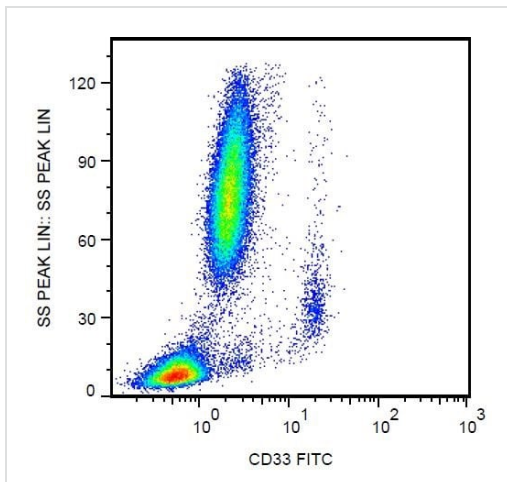
“应用说明”部分下显示的仅为推荐的起始稀释度;实际最佳的稀释度/浓度应由使用者检定。

应用	Ab评论	说明
Flow Cyt		Use 4µl for 10 ⁶ cells. (or 100 µL whole blood)

靶标

功能	Putative adhesion molecule of myelomonocytic-derived cells that mediates sialic-acid dependent binding to cells. Preferentially binds to alpha-2,6-linked sialic acid. The sialic acid recognition site may be masked by cis interactions with sialic acids on the same cell surface. In the immune response, may act as an inhibitory receptor upon ligand induced tyrosine phosphorylation by recruiting cytoplasmic phosphatase(s) via their SH2 domain(s) that block signal transduction through dephosphorylation of signaling molecules. Induces apoptosis in acute myeloid leukemia (in vitro).
组织特异性	Monocytic/myeloid lineage cells.
序列相似性	Belongs to the immunoglobulin superfamily. SIGLEC (sialic acid binding Ig-like lectin) family. Contains 1 Ig-like C2-type (immunoglobulin-like) domain. Contains 1 Ig-like V-type (immunoglobulin-like) domain.
结构域	Contains 2 copies of a cytoplasmic motif that is referred to as the immunoreceptor tyrosine-based inhibitor motif (ITIM). This motif is involved in modulation of cellular responses. The phosphorylated ITIM motif can bind the SH2 domain of several SH2-containing phosphatases.
翻译后修饰	Phosphorylation of Tyr-340 is involved in binding to PTPN6 and PTPN11. Phosphorylation of Tyr-358 is involved in binding to PTPN6.
细胞定位	Cell membrane.

图片



Flow Cytometry - FITC Anti-CD33 antibody [WM53]
(ab234216)

Flow Cytometry analysis of human peripheral blood labeling CD33 with ab234216. Surface staining. Leukocyte gate.

Please note: All products are "FOR RESEARCH USE ONLY. NOT FOR USE IN DIAGNOSTIC PROCEDURES"

Our Abpromise to you: Quality guaranteed and expert technical support

- Replacement or refund for products not performing as stated on the datasheet
- Valid for 12 months from date of delivery
- Response to your inquiry within 24 hours
- We provide support in Chinese, English, French, German, Japanese and Spanish
- Extensive multi-media technical resources to help you
- We investigate all quality concerns to ensure our products perform to the highest standards

If the product does not perform as described on this datasheet, we will offer a refund or replacement. For full details of the Abpromise, please visit <https://www.abcam.cn/abpromise> or contact our technical team.

Terms and conditions

- Guarantee only valid for products bought direct from Abcam or one of our authorized distributors