

### FITC Anti-CD3 epsilon antibody [C363.29B] ab24948

[3 References](#) [2 图像](#)

#### 概述

产品名称	FITC荧光Anti-CD3 epsilon抗体[C363.29B]
描述	FITC荧光大鼠单克隆抗体[C363.29B] to CD3 epsilon
宿主	Rat
偶联物	FITC. Ex: 493nm, Em: 528nm
经测试应用	适用于: Flow Cyt
种属反应性	与反应: Mouse
免疫原	Tissue, cells or virus corresponding to Mouse CD3 epsilon. IL-4 producing Th2 cell lines including D10.
表位	This antibody reacts with an epitope located in the epsilon chain of the CD3/TCR complex.
阳性对照	Flow Cyt: Cells from BALB/c mouse mesenteric lymph nodes. Mouse splenocytes.
常规说明	<p>The Life Science industry has been in the grips of a reproducibility crisis for a number of years. Abcam is leading the way in addressing this with our range of recombinant monoclonal antibodies and knockout edited cell lines for gold-standard validation. Please check that this product meets your needs before purchasing.</p> <p>If you have any questions, special requirements or concerns, please send us an inquiry and/or contact our Support team ahead of purchase. Recommended alternatives for this product can be found below, along with publications, customer reviews and Q&amp;As</p>

#### 性能

形式	Liquid
存放说明	Shipped at 4°C. Store at +4°C. Store In the Dark.
存储溶液	<p>pH: 7.4</p> <p>Preservative: 0.1% Sodium azide</p> <p>Constituent: PBS</p>
纯度	Affinity purified
克隆	单克隆
克隆编号	C363.29B
同种型	IgG2c
轻链类型	kappa

应用

**The Abpromise guarantee**      **Abpromise™**承诺保证使用ab24948于以下的经测试应用

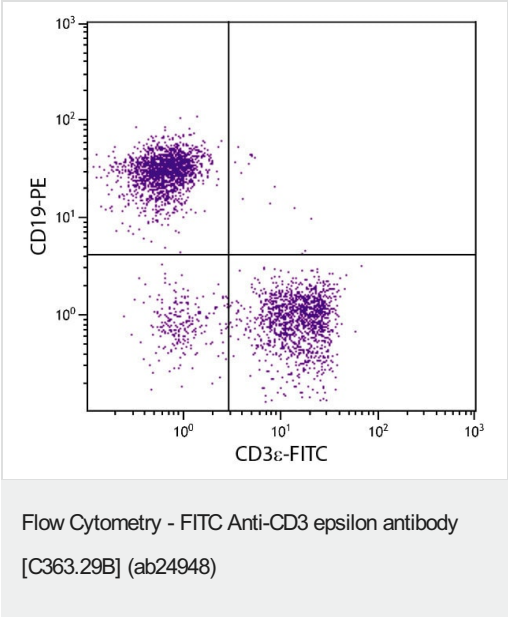
“应用说明”部分 下显示的仅为推荐的起始稀释度;实际最佳的稀释度/浓度应由使用者检定。

应用	Ab评论	说明
Flow Cyt		Use 3µg for 10 <sup>6</sup> cells. <i>In vitro</i> depletion of CD3+ cells and activation of T cells (accessory cells must be provided). <b>ab114134</b> - Rat monoclonal IgG2c, is suitable for use as an isotype control with this antibody.

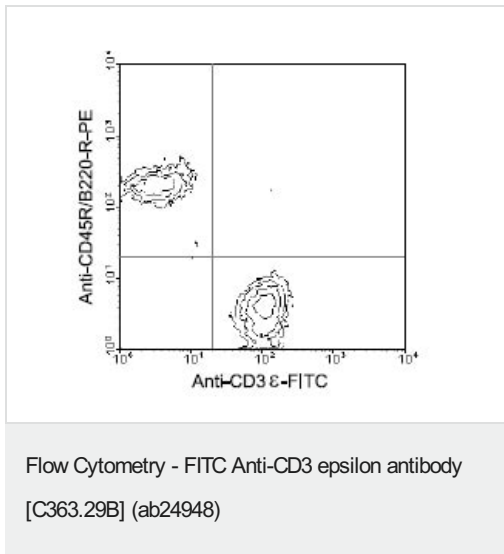
靶标

功能	The CD3 complex mediates signal transduction.
序列相似性	Contains 1 Ig-like (immunoglobulin-like) domain. Contains 1 ITAM domain.
细胞定位	Membrane.

图片



Flow Cytometry analysis of C57BL/6 mouse splenocytes stained with Anti-CD3 epsilon antibody [C363.29B] (FITC) ab24948 (1 µg/10<sup>6</sup> cells) and Rat Anti-Mouse CD19-PE.



Ab24948 (3 $\mu$ g for 10<sup>6</sup> cells) and anti mouse CD45R/B220 RPE conjugate antibody doubly staining cells from BALB/c mesenteric lymph nodes, gated on small lymphocytes and analyzed using a flow cytometer.

**Please note:** All products are "FOR RESEARCH USE ONLY. NOT FOR USE IN DIAGNOSTIC PROCEDURES"

### Our Abpromise to you: Quality guaranteed and expert technical support

- Replacement or refund for products not performing as stated on the datasheet
- Valid for 12 months from date of delivery
- Response to your inquiry within 24 hours
- We provide support in Chinese, English, French, German, Japanese and Spanish
- Extensive multi-media technical resources to help you
- We investigate all quality concerns to ensure our products perform to the highest standards

If the product does not perform as described on this datasheet, we will offer a refund or replacement. For full details of the Abpromise, please visit <https://www.abcam.cn/abpromise> or contact our technical team.

### Terms and conditions

- Guarantee only valid for products bought direct from Abcam or one of our authorized distributors