

# FITC Anti-CD226 antibody [DX11] ab33335

[1 References](#) [1 图像](#)

### 概述

<b>产品名称</b>	FITC荧光Anti-CD226抗体[DX11]
<b>描述</b>	FITC荧光小鼠单克隆抗体[DX11] to CD226
<b>宿主</b>	Mouse
<b>偶联物</b>	FITC. Ex: 493nm, Em: 528nm
<b>经测试应用</b>	<b>适用于:</b> Flow Cyt
<b>种属反应性</b>	<b>与反应:</b> Human
<b>免疫原</b>	Tissue, cells or virus corresponding to Human CD226. Human cytotoxic T lymphocyte clone.
<b>阳性对照</b>	Human peripheral blood lymphocytes.
<b>常规说明</b>	<p>Clone DX11 is reported to inhibit T and NK cell mediated cytotoxicity against tumour cell targets and to block TNF alpha and IFN gamma secretion by alloantigen specific T cells.</p> <p>The Life Science industry has been in the grips of a reproducibility crisis for a number of years. Abcam is leading the way in addressing this with our range of recombinant monoclonal antibodies and knockout edited cell lines for gold-standard validation. Please check that this product meets your needs before purchasing.</p> <p>If you have any questions, special requirements or concerns, please send us an inquiry and/or contact our Support team ahead of purchase. Recommended alternatives for this product can be found below, along with publications, customer reviews and Q&amp;As</p>

### 性能

<b>形式</b>	Liquid
<b>存放说明</b>	Shipped at 4°C. Store at +4°C.
<b>存储溶液</b>	pH: 7.40 Preservative: 0.09% Sodium azide Constituents: PBS, 1% BSA
<b>纯度</b>	Protein G purified
<b>纯化说明</b>	This antibody was purified from tissue culture supernatant.
<b>Primary antibody说明</b>	Clone DX11 is reported to inhibit T and NK cell mediated cytotoxicity against tumour cell targets and to block TNF alpha and IFN gamma secretion by alloantigen specific T cells.

克隆	单克隆
克隆编号	DX11
骨髓瘤	Sp2/0
同种型	IgG1

## 应用

**The Abpromise guarantee**      **Abpromise™**承诺保证使用ab33335于以下的经测试应用

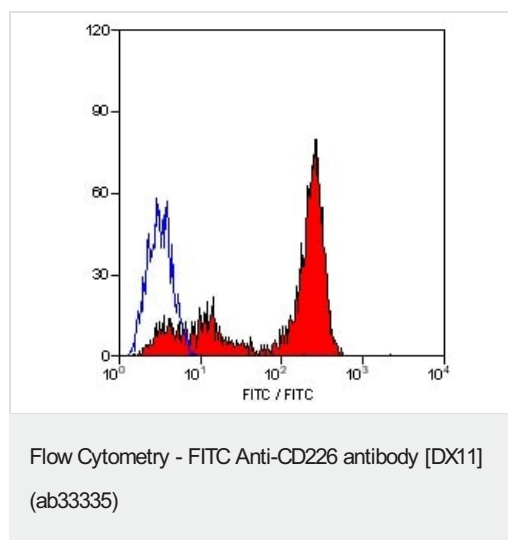
“应用说明”部分 下显示的仅为推荐的起始稀释度;实际最佳的稀释度/浓度应由使用者检定。

应用	Ab评论	说明
Flow Cyt		1/10 - 1/20. Use 10µl of the suggested working dilution to label 10 <sup>6</sup> cells in 100µl.

## 靶标

功能	Receptor involved in intercellular adhesion, lymphocyte signaling, cytotoxicity and lymphokine secretion mediated by cytotoxic T-lymphocyte (CTL) and NK cell.
组织特异性	Expressed by peripheral blood T-lymphocytes.
序列相似性	Contains 2 Ig-like C2-type (immunoglobulin-like) domains.
细胞定位	Membrane.

## 图片



Ab33335, at a dilution of 10µl for labeling 10<sup>6</sup> cells in 100µl, staining CD226 in human peripheral blood lymphocytes by Flow Cytometry.

## **Our Abpromise to you: Quality guaranteed and expert technical support**

---

- Replacement or refund for products not performing as stated on the datasheet
- Valid for 12 months from date of delivery
- Response to your inquiry within 24 hours
  
- We provide support in Chinese, English, French, German, Japanese and Spanish
- Extensive multi-media technical resources to help you
- We investigate all quality concerns to ensure our products perform to the highest standards

If the product does not perform as described on this datasheet, we will offer a refund or replacement. For full details of the Abpromise, please visit <https://www.abcam.cn/abpromise> or contact our technical team.

## **Terms and conditions**

---

- Guarantee only valid for products bought direct from Abcam or one of our authorized distributors