

### FITC Anti-CD20 antibody [2H7] ab51792

#### 1 图像

#### 概述

产品名称	FITC荧光Anti-CD20抗体[2H7]
描述	FITC荧光小鼠单克隆抗体[2H7] to CD20
宿主	Mouse
偶联物	FITC. Ex: 493nm, Em: 528nm
经测试应用	适用于: Flow Cyt
种属反应性	与反应: Human
免疫原	Tissue, cells or virus corresponding to CD20.
表位	The epitope recognised by this antibody has been mapped to the following sequence which is found in the large extracellular loop of human CD20: YNCEPANPSEKNSPST
常规说明	<p>The Life Science industry has been in the grips of a reproducibility crisis for a number of years. Abcam is leading the way in addressing this with our range of recombinant monoclonal antibodies and knockout edited cell lines for gold-standard validation. Please check that this product meets your needs before purchasing.</p> <p>If you have any questions, special requirements or concerns, please send us an inquiry and/or contact our Support team ahead of purchase. Recommended alternatives for this product can be found below, along with publications, customer reviews and Q&amp;As</p>

#### 性能

形式	Liquid
存放说明	Shipped at 4°C. Store at +4°C short term (1-2 weeks). Upon delivery aliquot. Store at +4°C. Avoid freeze / thaw cycle. Do Not Freeze. Store In the Dark.
存储溶液	<p>pH: 7.40</p> <p>Preservative: 0.09% Sodium azide</p> <p>Constituents: 0.16% Sodium phosphate, 0.87% Sodium chloride, 0.1% Gelatin</p>
纯度	Affinity purified
克隆	单克隆
克隆编号	2H7
同种型	IgG2b

应用

**The Abpromise guarantee**      **Abpromise™**承诺保证使用ab51792于以下的经测试应用

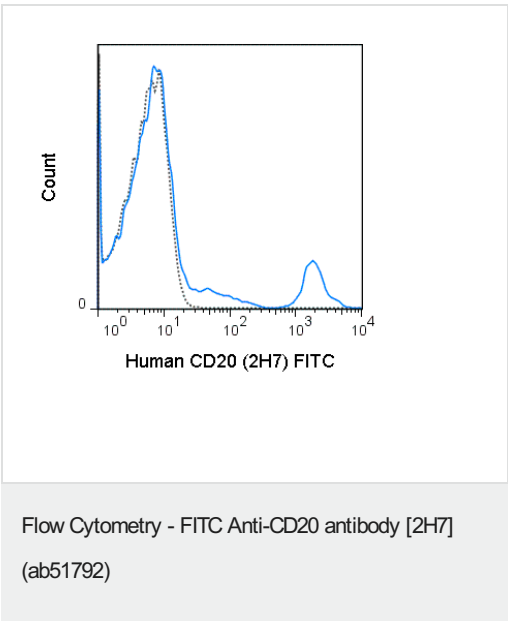
“应用说明”部分 下显示的仅为推荐的起始稀释度;实际最佳的稀释度/浓度应由使用者检定。

应用	Ab评论	说明
Flow Cyt		Use 5µl for 10 <sup>5-8</sup> cells. The antibody has been diluted for use at 5 µl (0.25 µg) per test, defined as the amount of antibody that will stain a cell sample in a final volume of approximately 100 µl.

靶标

功能	This protein may be involved in the regulation of B-cell activation and proliferation.
组织特异性	Expressed on B-cells.
疾病相关	Defects in MS4A1 are the cause of immunodeficiency common variable type 5 (CVID5) [MIM:613495]; also called antibody deficiency due to CD20 defect. CVID5 is a primary immunodeficiency characterized by antibody deficiency, hypogammaglobulinemia, recurrent bacterial infections and an inability to mount an antibody response to antigen. The defect results from a failure of B-cell differentiation and impaired secretion of immunoglobulins; the numbers of circulating B cells is usually in the normal range, but can be low.
序列相似性	Belongs to the MS4A family.
翻译后修饰	Phosphorylated. Might be functionally regulated by protein kinase(s).
细胞定位	Membrane.

图片



Flow cytometry analysis showing human peripheral blood lymphocytes stained with ab51792 (solid line) and isotype control antibody was FITC Mouse IgG2b (dashed line).

**Please note:** All products are "FOR RESEARCH USE ONLY. NOT FOR USE IN DIAGNOSTIC PROCEDURES"

### **Our Abpromise to you: Quality guaranteed and expert technical support**

---

- Replacement or refund for products not performing as stated on the datasheet
- Valid for 12 months from date of delivery
- Response to your inquiry within 24 hours
  
- We provide support in Chinese, English, French, German, Japanese and Spanish
- Extensive multi-media technical resources to help you
- We investigate all quality concerns to ensure our products perform to the highest standards

If the product does not perform as described on this datasheet, we will offer a refund or replacement. For full details of the Abpromise, please visit <https://www.abcam.cn/abpromise> or contact our technical team.

### **Terms and conditions**

---

- Guarantee only valid for products bought direct from Abcam or one of our authorized distributors