

# FITC Anti-CD147 antibody [MEM-M6/1] ab69771

**2 References**   **1 图像**

### 概述

产品名称	FITC荧光Anti-CD147抗体[MEM-M6/1]
描述	FITC荧光小鼠单克隆抗体[MEM-M6/1] to CD147
宿主	Mouse
偶联物	FITC. Ex: 493nm, Em: 528nm
特异性	ab69771 recognizes an epitope in the N-terminal Ig domain (D1) of CD147 and is a high-affinity antibody capable of binding to unstimulated peripheral blood T cells.
经测试应用	<b>适用于:</b> Flow Cyt
种属反应性	<b>与反应:</b> Human
免疫原	Protein A chromatography purified soluble recombinant form of CD147, CD147Rg, which consists of the cDNA coding for the hinge region, CH2-and CH3 domain of human IgG1 (CD147Rg is secreted by transfectants as a dimmer).
常规说明	<p>The purified antibody is conjugated with Fluorescein isothiocyanate (FITC) under optimum conditions. The reagent is free of unconjugated FITC.</p> <p>The Life Science industry has been in the grips of a reproducibility crisis for a number of years. Abcam is leading the way in addressing this with our range of recombinant monoclonal antibodies and knockout edited cell lines for gold-standard validation. Please check that this product meets your needs before purchasing.</p> <p>If you have any questions, special requirements or concerns, please send us an inquiry and/or contact our Support team ahead of purchase. Recommended alternatives for this product can be found below, along with publications, customer reviews and Q&amp;As</p>

### 性能

形式	Liquid
存放说明	Shipped at 4°C. Store at +4°C.
存储溶液	<p>pH: 7.4</p> <p>Preservative: 0.097% Sodium azide</p> <p>Constituents: 0.2% BSA, PBS</p>
纯度	Size exclusion
克隆	单克隆

克隆编号MEM-M6/1

同种型IgG1

应用

The Abpromise guarantee

Abpromise™承诺保证使用ab69771于以下的经测试应用

“应用说明”部分 下显示的仅为推荐的起始稀释度;实际最佳的稀释度/浓度应由使用者检定。

应用	Ab评论	说明
Flow Cyt		

应用说明

Flow Cyt: Use 20µl for 10<sup>6</sup> cells or 100µl whole blood.

Not yet tested in other applications.

Optimal dilutions/concentrations should be determined by the end user.

靶标

功能

Plays pivotal roles in spermatogenesis, embryo implantation, neural network formation and tumor progression. Stimulates adjacent fibroblasts to produce matrix metalloproteinases (MMPS). May target monocarboxylate transporters SLC16A1, SLC16A3 and SLC16A8 to plasma membranes of retinal pigment epithelium and neural retina. Seems to be a receptor for oligomannosidic glycans. In vitro, promotes outgrowth of astrocytic processes.

组织特异性

Present only in vascular endothelium in non-neoplastic regions of the brain, whereas it is present in tumor cells but not in proliferating blood vessels in malignant gliomas.

序列相似性

Contains 1 Ig-like C2-type (immunoglobulin-like) domain.  
Contains 1 Ig-like V-type (immunoglobulin-like) domain.

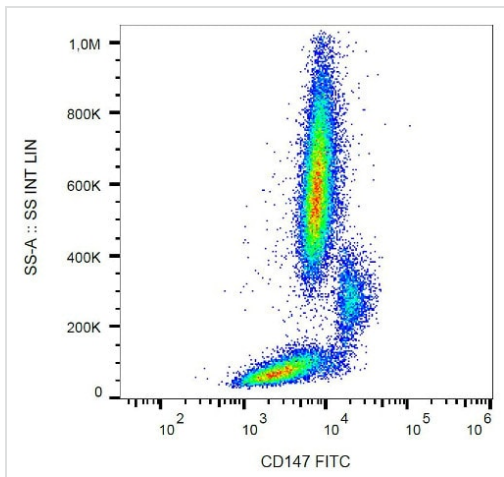
翻译后修饰

N-glycosylated.

细胞定位

Cell membrane. Melanosome. Colocalizes with SLC16A1 and SLC16A8 (By similarity). Identified by mass spectrometry in melanosome fractions from stage I to stage IV.

图片



Surface staining of human peripheral blood with anti-human CD147 (MEM-M6/1) FITC.

Flow Cytometry - FITC Anti-CD147 antibody [MEM-M6/1] (ab69771)

**Please note:** All products are "FOR RESEARCH USE ONLY. NOT FOR USE IN DIAGNOSTIC PROCEDURES"

### Our Abpromise to you: Quality guaranteed and expert technical support

- Replacement or refund for products not performing as stated on the datasheet
- Valid for 12 months from date of delivery
- Response to your inquiry within 24 hours
- We provide support in Chinese, English, French, German, Japanese and Spanish
- Extensive multi-media technical resources to help you
- We investigate all quality concerns to ensure our products perform to the highest standards

If the product does not perform as described on this datasheet, we will offer a refund or replacement. For full details of the Abpromise, please visit <https://www.abcam.cn/abpromise> or contact our technical team.

### Terms and conditions

- Guarantee only valid for products bought direct from Abcam or one of our authorized distributors