

FITC Anti-CD146 antibody [P1H12] ab78451

[7 References](#) [1 图像](#)

概述

产品名称	FITC荧光Anti-CD146抗体[P1H12]
描述	FITC荧光小鼠单克隆抗体[P1H12] to CD146
宿主	Mouse
偶联物	FITC. Ex: 493nm, Em: 528nm
特异性	<p>ab78451 reacts specifically with CD146. In blood and marrow ab78451 reacts only with endothelial cells, and has been used to detect circulating endothelial cells in human, dogs, rabbits and mouse samples. ab78451 positively stains normal, primary HUVEC and MVEC cultures and the endothelial cells of all vessels in normal frozen sections of human skin, intestine, ovary tonsil, lymph node, lung, and kidney. It does not stain carcinoma cell lines HT-29 and COLO205, and M21, the T cell lines Jurkat and HuT78, fibroblasts, HL-60 or CHO cells, EBV-transformed B cell lines, normal monocytes, granulocytes, red cells, platelets, T cells or B cells from marrow or peripheral blood; nor does it detect marrow megakaryocytes or the megakaryoblast line HU3. The peripheral blood cells that do stain with ab78451 are also positive for both von Willebrand Factor (vWF) and thrombomodulin (the combined expression of which is limited to endothelium), and they stain for fit and flk. In recent testing, melanoma A2058, SKMEL.3 and A375.S2 are positive, while murine melanoma M3 is negative. One smooth muscle line (HISM) was positive and one negative (TIGHA-VSMC). Human blood lymphocytes are negative with or without prior stimulation. We have data to indicate that this antibody may not cross react with Rat. However, this has not been conclusively tested and expression levels may vary in certain cell lines/tissues.</p>
经测试应用	适用于: Flow Cyt
种属反应性	与反应: Human
免疫原	Tissue, cells or virus corresponding to Human CD146. Cultured human umbilical cells.
阳性对照	Human, mouse or dog blood or marrow cells Human intestinal smooth muscle cells Melanoma A2058, SKMEL.3 or A375.S2 cells Normal, primary HUVEC or MVEC cultures Human skin, intestine, ovary tonsil, lymph node, lung or kidney tissue.
常规说明	<p>The Life Science industry has been in the grips of a reproducibility crisis for a number of years. Abcam is leading the way in addressing this with our range of recombinant monoclonal antibodies and knockout edited cell lines for gold-standard validation. Please check that this product meets your needs before purchasing.</p> <p>If you have any questions, special requirements or concerns, please send us an inquiry and/or contact our Support team ahead of purchase. Recommended alternatives for this product can be found below, along with publications, customer reviews and Q&As</p>

性能

形式	Liquid
存放说明	Shipped at 4°C. Store at +4°C.
存储溶液	pH: 7.60 Preservative: 0.1% Sodium azide Constituents: 1.5% BSA, 1.45% Sodium chloride, 0.0536% PBS
纯度	Immunogen affinity purified
克隆	单克隆
克隆编号	P1H12
同种型	IgG1

应用

The Abpromise guarantee **Abpromise™** 承诺保证使用 ab78451 于以下的经测试应用

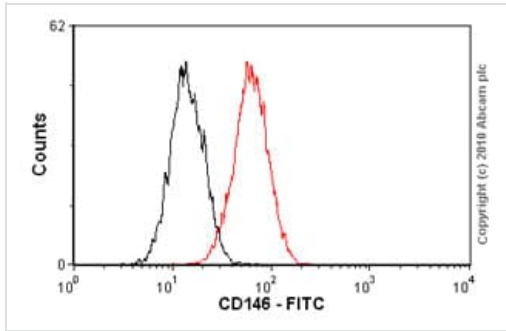
“应用说明”部分 下显示的仅为推荐的起始稀释度;实际最佳的稀释度/浓度应由使用者检定。

应用	Ab评论	说明
Flow Cyt		Use 2µg for 10 ⁶ cells. Methanol fixed cells. ab91356 - Mouse monoclonal IgG1, is suitable for use as an isotype control with this antibody.

靶标

功能	Plays a role in cell adhesion, and in cohesion of the endothelial monolayer at intercellular junctions in vascular tissue. Its expression may allow melanoma cells to interact with cellular elements of the vascular system, thereby enhancing hematogeneous tumor spread. Could be an adhesion molecule active in neural crest cells during embryonic development. Acts as surface receptor that triggers tyrosine phosphorylation of FYN and PTK2, and a transient increase in the intracellular calcium concentration.
组织特异性	Detected in endothelial cells in vascular tissue throughout the body. May appear at the surface of neural crest cells during their embryonic migration. Appears to be limited to vascular smooth muscle in normal adult tissues. Associated with tumor progression and the development of metastasis in human malignant melanoma. Expressed most strongly on metastatic lesions and advanced primary tumors and is only rarely detected in benign melanocytic nevi and thin primary melanomas with a low probability of metastasis.
序列相似性	Contains 3 Ig-like C2-type (immunoglobulin-like) domains. Contains 2 Ig-like V-type (immunoglobulin-like) domains.
细胞定位	Membrane.

图片



Flow Cytometry - FITC Anti-CD146 antibody [P1H12] (ab78451)

Overlay histogram showing MCF-7 cells stained with ab78451 (red line). The cells were fixed with methanol (5 min) and incubated in 1x PBS / 10% normal goat serum / 0.3M glycine to block non-specific protein-protein interactions. The cells were then incubated with the antibody (ab78451, 2µg/1x10⁶ cells) for 30 min at 22°C. Isotype control antibody (black line) was mouse IgG1 FITC used under the same conditions. Acquisition of >5,000 events was performed. This antibody gave a significantly decreased signal in MCF-7 cells fixed with 4% paraformaldehyde (10 min) used under the same conditions.

Please note that Abcam does not have data for use of this antibody on non-fixed cells. We welcome any customer feedback.

Please note: All products are "FOR RESEARCH USE ONLY. NOT FOR USE IN DIAGNOSTIC PROCEDURES"

Our Abpromise to you: Quality guaranteed and expert technical support

- Replacement or refund for products not performing as stated on the datasheet
- Valid for 12 months from date of delivery
- Response to your inquiry within 24 hours
- We provide support in Chinese, English, French, German, Japanese and Spanish
- Extensive multi-media technical resources to help you
- We investigate all quality concerns to ensure our products perform to the highest standards

If the product does not perform as described on this datasheet, we will offer a refund or replacement. For full details of the Abpromise, please visit <https://www.abcam.cn/abpromise> or contact our technical team.

Terms and conditions

- Guarantee only valid for products bought direct from Abcam or one of our authorized distributors