

FITC Anti-CD103 antibody [2E7] ab24938

1 References [1 图像](#)

概述

| | |
|-------|---|
| 产品名称 | FITC荧光Anti-CD103抗体[2E7] |
| 描述 | FITC荧光亚美尼亚仓鼠单克隆抗体[2E7] to CD103 |
| 宿主 | Armenian hamster |
| 偶联物 | FITC. Ex: 493nm, Em: 528nm |
| 特异性 | ab24938 recognises the CD103 complex (115 and 160 kDa subunits). |
| 经测试应用 | 适用于: Flow Cyt |
| 种属反应性 | 与反应: Mouse |
| 免疫原 | Tissue, cells or virus corresponding to Mouse CD103. C57BL/6J mouse intestinal intraepithelial lymphocytes (IEL) |
| 阳性对照 | Flow Cyt: Mouse mesenteric lymph node cells. |
| 常规说明 | <p>The Life Science industry has been in the grips of a reproducibility crisis for a number of years. Abcam is leading the way in addressing this with our range of recombinant monoclonal antibodies and knockout edited cell lines for gold-standard validation. Please check that this product meets your needs before purchasing.</p> <p>If you have any questions, special requirements or concerns, please send us an inquiry and/or contact our Support team ahead of purchase. Recommended alternatives for this product can be found below, along with publications, customer reviews and Q&As</p> |

性能

| | |
|------|---|
| 形式 | Liquid |
| 存放说明 | Shipped at 4°C. Store at +4°C. Store In the Dark. |
| 存储溶液 | <p>pH: 7.4</p> <p>Preservative: 0.1% Sodium azide</p> <p>Constituent: PBS</p> |
| 纯度 | Affinity purified |
| 克隆 | 单克隆 |
| 克隆编号 | 2E7 |
| 同种型 | IgG |

应用

The Abpromise guarantee **Abpromise™**承诺保证使用ab24938于以下的经测试应用

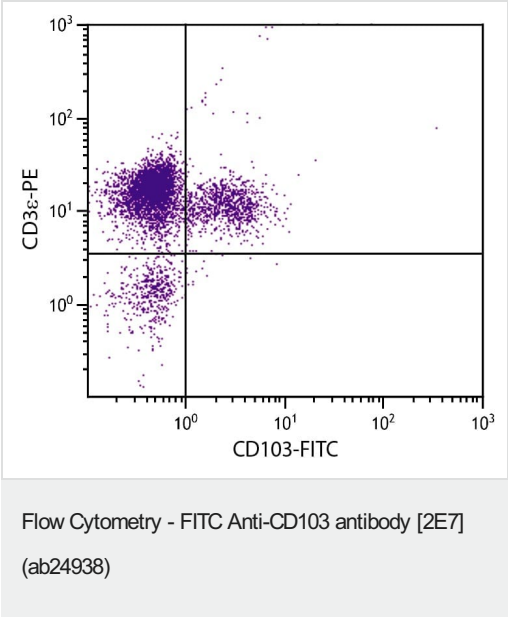
“应用说明”部分 下显示的仅为推荐的起始稀释度;实际最佳的稀释度/浓度应由使用者检定。

| 应用 | Ab评论 | 说明 |
|----------|------|--|
| Flow Cyt | | Use at an assay dependent concentration. |

靶标

| | |
|-------|---|
| 功能 | Integrin alpha-E/beta-7 is a receptor for E-cadherin. It mediates adhesion of intra-epithelial T-lymphocytes to epithelial cell monolayers. |
| 组织特异性 | Expressed on a subclass of T-lymphocytes known as intra-epithelial lymphocytes which are located between mucosal epithelial cells. |
| 序列相似性 | Belongs to the integrin alpha chain family. Contains 7 FG-GAP repeats. Contains 1 VWFA domain. |
| 结构域 | The integrin I-domain (insert) is a VWFA domain. Integrins with I-domains do not undergo protease cleavage. |
| 细胞定位 | Membrane. |

图片



Mouse mesenteric lymph node cells were costained using CD103-FITC and CD3ε-PE to distinguish cell subpopulations. Cells were incubated with anti-CD103 antibody [2E7] (FITC) (ab24938) at 1 µg/10⁶ cells.

Please note: All products are "FOR RESEARCH USE ONLY. NOT FOR USE IN DIAGNOSTIC PROCEDURES"

Our Abpromise to you: Quality guaranteed and expert technical support

- Replacement or refund for products not performing as stated on the datasheet
- Valid for 12 months from date of delivery
- Response to your inquiry within 24 hours
- We provide support in Chinese, English, French, German, Japanese and Spanish
- Extensive multi-media technical resources to help you
- We investigate all quality concerns to ensure our products perform to the highest standards

If the product does not perform as described on this datasheet, we will offer a refund or replacement. For full details of the Abpromise, please visit <https://www.abcam.cn/abpromise> or contact our technical team.

Terms and conditions

- Guarantee only valid for products bought direct from Abcam or one of our authorized distributors