


FITC Anti-alpha Tubulin antibody [DM1A] - Microtubule Marker ab64503

★★★★★ [6 Abreviews](#) [17 References](#) [2 图像](#)

概述

产品名称	FITC荧光Anti-alpha Tubulin抗体[DM1A] - Microtubule Marker
描述	FITC荧光小鼠单克隆抗体[DM1A] to alpha Tubulin - Microtubule Marker
宿主	Mouse
偶联物	FITC. Ex: 493nm, Em: 528nm
经测试应用	适用于: ICC/IF, Flow Cyt (Intra)
种属反应性	与反应: Mouse, Human 预测可用于: Rat, Chicken, Guinea pig, Cow, Dog, Pig, Xenopus laevis, Gerbil 
免疫原	Full length native protein (purified) corresponding to alpha Tubulin.
表位	aa426-450. Ab64503 specifically recognizes an epitope in the carboxy-terminal part of alpha-tubulin.
阳性对照	ICC/IF: HeLa cells. IHC-Fr: Xenopus laevis stage 36 tissue. Flow Cyt (Intra): HeLa cells. Cultured human fibroblasts, baby hamster kidney (BHK) cells.
常规说明	<p>The Life Science industry has been in the grips of a reproducibility crisis for a number of years. Abcam is leading the way in addressing this with our range of recombinant monoclonal antibodies and knockout edited cell lines for gold-standard validation. Please check that this product meets your needs before purchasing.</p> <p>If you have any questions, special requirements or concerns, please send us an inquiry and/or contact our Support team ahead of purchase. Recommended alternatives for this product can be found below, along with publications, customer reviews and Q&As</p>

性能

形式	Liquid
存放说明	Shipped at 4°C. Store at +4°C short term (1-2 weeks). Store at -20°C. Avoid freeze / thaw cycle. Store In the Dark.
存储溶液	Preservative: 0.02% Sodium azide Constituents: PBS, 30% Glycerol (glycerin, glycerine), 1% BSA
纯度	IgG fraction
克隆	单克隆

克隆编号	DM1A
同种型	IgG1
轻链类型	kappa

应用

The Abpromise guarantee **Abpromise™**承诺保证使用ab64503于以下的经测试应用

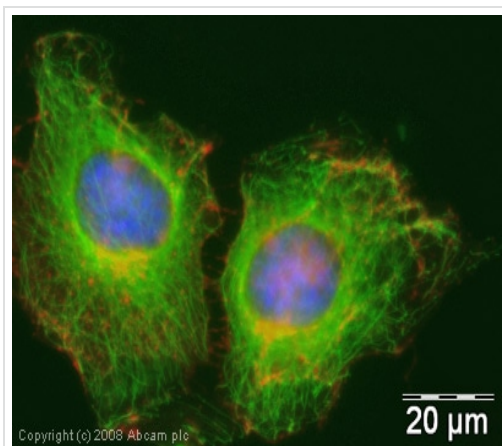
“应用说明”部分 下显示的仅为推荐的起始稀释度;实际最佳的稀释度/浓度应由使用者检定。

应用	Ab评论	说明
ICC/IF	★★★★★ (4)	Use a concentration of 1 µg/ml.
Flow Cyt (Intra)		Use 5.1µl for 10 ⁶ cells. ab106163 - Mouse monoclonal IgG1, is suitable for use as an isotype control with this antibody.

靶标

功能	Tubulin is the major constituent of microtubules. It binds two moles of GTP, one at an exchangeable site on the beta chain and one at a non-exchangeable site on the alpha chain.
序列相似性	Belongs to the tubulin family.
翻译后修饰	Some glutamate residues at the C-terminus are polyglutamylated. This modification occurs exclusively on glutamate residues and results in polyglutamate chains on the gamma-carboxyl group. Also monoglycylated but not polyglycylated due to the absence of functional TTLL10 in human. Monoglycylation is mainly limited to tubulin incorporated into axonemes (cilia and flagella) whereas glutamylation is prevalent in neuronal cells, centrioles, axonemes, and the mitotic spindle. Both modifications can coexist on the same protein on adjacent residues, and lowering glycylation levels increases polyglutamylated, and reciprocally. The precise function of such modifications is still unclear but they regulate the assembly and dynamics of axonemal microtubules. Acetylation of alpha chains at Lys-40 stabilizes microtubules and affects affinity and processivity of microtubule motors. This modification has a role in multiple cellular functions, ranging from cell motility, cell cycle progression or cell differentiation to intracellular trafficking and signaling.
细胞定位	Cytoplasm > cytoskeleton.

图片



Immunocytochemistry/ Immunofluorescence - FITC
Anti-alpha Tubulin antibody [DM1A] - Microtubule
Marker (ab64503)

ICC/IF image of ab64503 stained human HeLa cells. The cells were methanol fixed (10 min), permeabilised in 0.1% PBS-Tween (20 min) and incubated with the antibody (ab64503, 1 μg/ml, FITC conjugated (green)) for 1 h at room temperature. 1% BSA / 10% normal goat serum / 0.3M glycine was used to block non-specific protein-protein interactions. Alexa Fluor® 594 WGA was used to label plasma membranes (red). DAPI was used to stain the cell nuclei (blue).

Flow Cytometry (Intracellular) - FITC Anti-alpha
Tubulin antibody [DM1A] - Microtubule Marker
(ab64503)

Overlay histogram showing HeLa cells stained with ab64503 (red line). The cells were fixed with 80% methanol (5 min) and then permeabilized with 0.1% PBS-Tween for 20 min. The cells were then incubated in 1x PBS / 10% normal goat serum / 0.3M glycine to block non-specific protein-protein interactions followed by the antibody (ab64503, 0.5 μg/1x10⁶ cells) for 30 min at 22°C. Isotype control antibody (black line) was mouse IgG1 (1 μg/1x10⁶ cells). Acquisition of >5,000 events was performed. This antibody gave a positive signal in HeLa cells fixed with 4% paraformaldehyde/permeabilized in 0.1% PBS-Tween used under the same conditions.

Please note: All products are "FOR RESEARCH USE ONLY. NOT FOR USE IN DIAGNOSTIC PROCEDURES"

Our Abpromise to you: Quality guaranteed and expert technical support

- Replacement or refund for products not performing as stated on the datasheet
- Valid for 12 months from date of delivery
- Response to your inquiry within 24 hours
- We provide support in Chinese, English, French, German, Japanese and Spanish

- Extensive multi-media technical resources to help you
- We investigate all quality concerns to ensure our products perform to the highest standards

If the product does not perform as described on this datasheet, we will offer a refund or replacement. For full details of the Abpromise, please visit <https://www.abcam.cn/abpromise> or contact our technical team.

Terms and conditions

- Guarantee only valid for products bought direct from Abcam or one of our authorized distributors