


FITC Anti-alpha smooth muscle Actin antibody [1A4] ab8211

敲除验证

★★★★★ [9 Abreviews](#) [64 References](#) [2 图像](#)

概述

产品名称	FITC荧光Anti-alpha smooth muscle Actin抗体[1A4]
描述	FITC荧光小鼠单克隆抗体[1A4] to alpha smooth muscle Actin
宿主	Mouse
偶联物	FITC. Ex: 493nm, Em: 528nm
经测试应用	适用于: ICC/IF, WB
种属反应性	与反应: Human 预测可用于: Mouse, Rat, Sheep, Goat, Chicken, Guinea pig, Cat, Dog, Snake, Zebrafish 
免疫原	Synthetic peptide. This information is proprietary to Abcam and/or its suppliers.
阳性对照	ICC: SV40LT-SMC cells.
常规说明	<p>This antibody reacts with smooth muscle cells of blood vessels and parenchymal tissue of intestine, testis and ovary. This antibody strongly crossreacts with alphasmooth muscle actin in a variety of mammalian and non-mammalian species.</p> <p>The antibody is conjugated with FITC at a ratio 6 Moles of Fluorescein to 1 Mole of antibody. Maximum excitation of FITC occurs at wavelength 492 nm, and maximum emission occurs at wavelength 520 nm.</p> <p>The Life Science industry has been in the grips of a reproducibility crisis for a number of years. Abcam is leading the way in addressing this with our range of recombinant monoclonal antibodies and knockout edited cell lines for gold-standard validation. Please check that this product meets your needs before purchasing.</p> <p>If you have any questions, special requirements or concerns, please send us an inquiry and/or contact our Support team ahead of purchase. Recommended alternatives for this product can be found below, along with publications, customer reviews and Q&As</p>

性能

形式	Liquid
存放说明	Shipped at 4°C. Store at +4°C. Avoid freeze / thaw cycle. Store In the Dark.
存储溶液	pH: 7.40 Preservative: 0.02% Sodium azide

纯度	Constituents: PBS, 50% Glycerol (glycerin, glycerine), 0.05% BSA
Primary antibody说明	Protein G purified
	This antibody reacts with smooth muscle cells of blood vessels and parenchymal tissue of intestine, testis and ovary. This antibody strongly crossreacts with alpha smooth muscle actin in a variety of mammalian and non-mammalian species.
克隆	单克隆
克隆编号	1A4
同种型	IgG2a
轻链类型	kappa

应用

The Abpromise guarantee **Abpromise™**承诺保证使用ab8211于以下的经测试应用

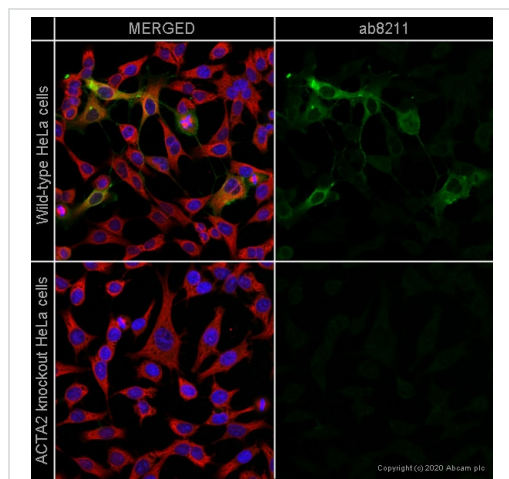
“应用说明”部分 下显示的仅为推荐的起始稀释度;实际最佳的稀释度/浓度应由使用者检定。

应用	Ab评论	说明
ICC/IF	★★★★☆ (2)	Use a concentration of 5 µg/ml.
WB		1/131.58. Predicted molecular weight: 42 kDa.

靶标

功能	Actins are highly conserved proteins that are involved in various types of cell motility and are ubiquitously expressed in all eukaryotic cells.
疾病相关	Defects in ACTA2 are the cause of aortic aneurysm familial thoracic type 6 (AAT6) [MIM:611788]. AATs are characterized by permanent dilation of the thoracic aorta usually due to degenerative changes in the aortic wall. They are primarily associated with a characteristic histologic appearance known as 'medial necrosis' or 'Erdheim cystic medial necrosis' in which there is degeneration and fragmentation of elastic fibers, loss of smooth muscle cells, and an accumulation of basophilic ground substance.
序列相似性	Belongs to the actin family.
细胞定位	Cytoplasm > cytoskeleton.

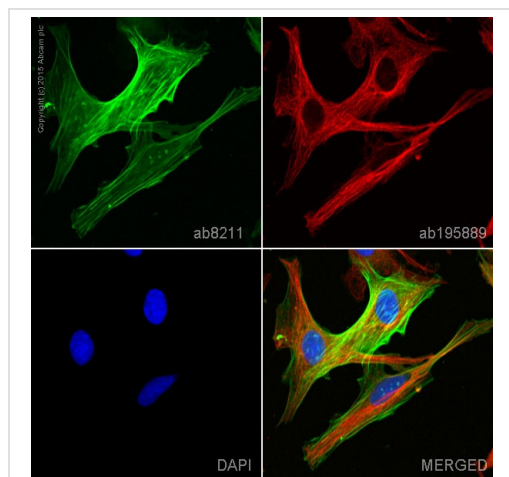
图片



Immunocytochemistry/ Immunofluorescence - FITC
Anti-alpha smooth muscle Actin antibody [1A4]
(ab8211)

ab8211 staining alpha smooth muscle Actin in wild-type HeLa cells (top panel) and ACTA2 knockout HeLa cells (bottom panel). The cells were fixed with 100% methanol (5 min) then permeabilized with 0.1% Triton X-100 for 5 minutes and then blocked with 1% BSA/10% normal goat serum/0.3M glycine in 0.1% PBS-Tween for 1h. The cells were then incubated with ab8211 at 5µg/ml concentration and **ab195884** (Rat monoclonal to Tubulin - Alexa Fluor® 647) at 1/100 dilution overnight at 4°C. Nuclear DNA was labelled in blue with DAPI.

Image was taken with a confocal microscope (Leica-Microsystems TCS SP8).



Immunocytochemistry/ Immunofluorescence - FITC
Anti-alpha smooth muscle Actin antibody [1A4]
(ab8211)

ab8211 staining alpha smooth muscle Actin in SV40LT-SMC cells. The cells were fixed with 100% methanol (5 min), permeabilized with 0.1% Triton X-100 for 5 minutes and then blocked with 1% BSA/10% normal goat serum/0.3M glycine in 0.1% PBS-Tween for 1h. The cells were then incubated overnight at +4°C with ab8211 at a 1/100 dilution (shown in green) and **ab195889**, Mouse monoclonal to alpha Tubulin (Alexa Fluor® 594), at a 1/250 dilution (shown in red). Nuclear DNA was labelled with DAPI (shown in blue).

Image was taken with a confocal microscope (Leica-Microsystems, TCS SP8).

This product also gave a positive signal under the same testing conditions in SV40LT-SMC cells fixed with 4% formaldehyde (10 min).

Please note: All products are "FOR RESEARCH USE ONLY. NOT FOR USE IN DIAGNOSTIC PROCEDURES"

Our Abpromise to you: Quality guaranteed and expert technical support

- Replacement or refund for products not performing as stated on the datasheet
- Valid for 12 months from date of delivery
- Response to your inquiry within 24 hours
- We provide support in Chinese, English, French, German, Japanese and Spanish
- Extensive multi-media technical resources to help you
- We investigate all quality concerns to ensure our products perform to the highest standards

If the product does not perform as described on this datasheet, we will offer a refund or replacement. For full details of the Abpromise, please visit <https://www.abcam.cn/abpromise> or contact our technical team.

Terms and conditions

- Guarantee only valid for products bought direct from Abcam or one of our authorized distributors