

FITC Anti-2B4 antibody [244F4] ab95805

1 图像

概述

产品名称	FITC荧光Anti-2B4抗体[244F4]
描述	FITC荧光大鼠单克隆抗体[244F4] to 2B4
宿主	Rat
偶联物	FITC. Ex: 493nm, Em: 528nm
经测试应用	适用于: Flow Cyt
种属反应性	与反应: Mouse
免疫原	The details of the immunogen for this antibody are not available.
阳性对照	BALB/c splenocytes.
常规说明	<p>ab95805 was generated against cell lines expressing CD244. It reacts with the C57BL/6 but not Balb/c due to polymorphisms present in the immunoglobulin V domain of the protein.</p> <p>The Life Science industry has been in the grips of a reproducibility crisis for a number of years. Abcam is leading the way in addressing this with our range of recombinant monoclonal antibodies and knockout edited cell lines for gold-standard validation. Please check that this product meets your needs before purchasing.</p> <p>If you have any questions, special requirements or concerns, please send us an inquiry and/or contact our Support team ahead of purchase. Recommended alternatives for this product can be found below, along with publications, customer reviews and Q&As</p>

性能

形式	Liquid
存放说明	Shipped at 4°C. Store at +4°C.
存储溶液	pH: 7.20 Preservative: 0.09% Sodium azide Constituent: 0.87% Sodium chloride
纯度	Protein G purified
Primary antibody说明	ab95805 was generated against cell lines expressing CD244. It reacts with the C57BL/6 but not Balb/c due to polymorphisms present in the immunoglobulin V domain of the protein.
克隆	单克隆

克隆编号 244F4

同种型 IgG2a

应用

The Abpromise guarantee **Abpromise™**承诺保证使用ab95805于以下的经测试应用

“应用说明”部分 下显示的仅为推荐的起始稀释度;实际最佳的稀释度/浓度应由使用者检定。

应用	Ab评论	说明
Flow Cyt		Use 0.25µg for 10 ⁵⁻⁸ cells. Use final volume of 100µl. ab18446 Rat monoclonal IgG2a is suitable for use as an

靶标

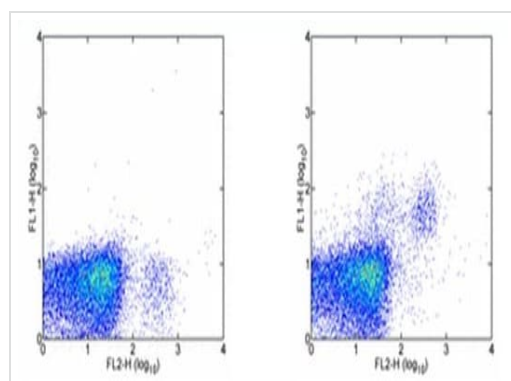
功能 Modulate other receptor-ligand interactions to enhance leukocyte activation.

组织特异性 Expressed in spleen, PBL, followed by lung, liver, testis and small intestine. Expressed not only in NK cells, but also on monocytes and basophils.

序列相似性 Contains 2 Ig-like (immunoglobulin-like) domains.

细胞定位 Membrane.

图片



Staining of BALB/c splenocytes with Anti-NK1-1 PE and 0.125 µg of Rat IgG2a Isotype Control FITC (left) or 0.125 µg of ab95805 (right). Cells in the lymphocyte gate were used for analysis.

Flow Cytometry - FITC Anti-2B4 antibody [244F4] (ab95805)

Please note: All products are "FOR RESEARCH USE ONLY. NOT FOR USE IN DIAGNOSTIC PROCEDURES"

Our Abpromise to you: Quality guaranteed and expert technical support

- Replacement or refund for products not performing as stated on the datasheet
- Valid for 12 months from date of delivery
- Response to your inquiry within 24 hours

- We provide support in Chinese, English, French, German, Japanese and Spanish
- Extensive multi-media technical resources to help you
- We investigate all quality concerns to ensure our products perform to the highest standards

If the product does not perform as described on this datasheet, we will offer a refund or replacement. For full details of the Abpromise, please visit <https://www.abcam.cn/abpromise> or contact our technical team.

Terms and conditions

- Guarantee only valid for products bought direct from Abcam or one of our authorized distributors