


# Anti-FIGNL1 antibody ab70841

## 2 图像

### 概述

产品名称	Anti-FIGNL1抗体
描述	兔多克隆抗体to FIGNL1
宿主	Rabbit
经测试应用	适用于: WB, IP
种属反应性	与反应: Mouse, Human 预测可用于: Rabbit, Chimpanzee, Rhesus monkey, Gorilla, Orangutan, Elephant 
免疫原	Synthetic peptide within Human FIGNL1 aa 1-100. The exact immunogen sequence used to generate this antibody is proprietary information. If additional detail on the immunogen is needed to determine the suitability of the antibody for your needs, please <b>contact</b> our Scientific Support team to discuss your requirements. Database link: <a href="#">Q6PIW4</a>
阳性对照	Whole cell lysate from HeLa, 293T and mouse NIH3T3 cells
常规说明	<p>The Life Science industry has been in the grips of a reproducibility crisis for a number of years. Abcam is leading the way in addressing this with our range of recombinant monoclonal antibodies and knockout edited cell lines for gold-standard validation. Please check that this product meets your needs before purchasing.</p> <p>If you have any questions, special requirements or concerns, please send us an inquiry and/or contact our Support team ahead of purchase. Recommended alternatives for this product can be found below, along with publications, customer reviews and Q&amp;As</p>

### 性能

形式	Liquid
存放说明	Shipped at 4°C. Upon delivery aliquot and store at -20°C. Avoid freeze / thaw cycles.
存储溶液	pH: 7 Preservative: 0.09% Sodium azide Constituents: 1.815% Tris, 1.764% Sodium citrate, 0.021% PBS
纯度	Immunogen affinity purified
克隆	多克隆
同种型	IgG

应用

The Abpromise guarantee

Abpromise™承诺保证使用ab70841于以下的经测试应用

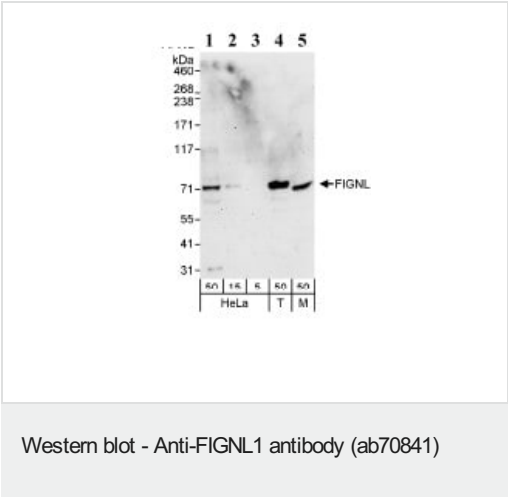
“应用说明”部分 下显示的仅为推荐的起始稀释度;实际最佳的稀释度/浓度应由使用者检定。

应用	Ab评论	说明
WB		1/1000 - 1/5000. Detects a band of approximately 71 kDa (predicted molecular weight: 74 kDa).
IP		Use at 2-5 µg/mg of lysate.

靶标

相关性	May regulate osteoblast proliferation and differentiation.
-----	--

图片



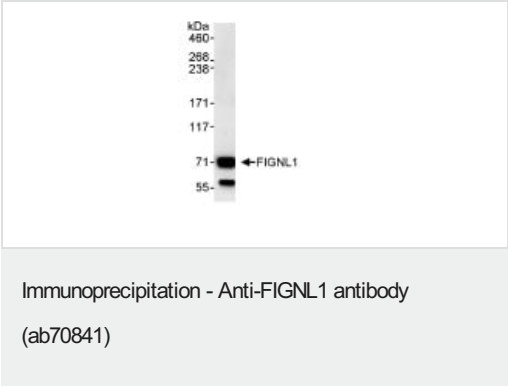
All lanes : Anti-FIGNL1 antibody (ab70841) at 1 µg/ml

- Lane 1 : Whole cell lysate from HeLa cells at 50 µg
- Lane 2 : Whole cell lysate from HeLa cells at 15 µg
- Lane 3 : Whole cell lysate from HeLa cells at 5 µg
- Lane 4 : Whole cell lysate from 293T cells at 50 µg
- Lane 5 : Whole cell lysate from NIH3T3 cells at 50 µg

Developed using the ECL technique.

Predicted band size: 74 kDa  
Observed band size: 71 kDa

Exposure time: 3 minutes



Detection of Human FIGNL1 by Immunoprecipitation in Whole cell lysate from HeLa (1 mg for IP, 20% of IP loaded), using ab70841 for IP at 3 µg/mg lysate. Subsequent WB detection was performed using 1 µg/mg ab70841 and chemiluminescence with an exposure time of 30 seconds.

**Please note:** All products are "FOR RESEARCH USE ONLY. NOT FOR USE IN DIAGNOSTIC PROCEDURES"

### **Our Abpromise to you: Quality guaranteed and expert technical support**

---

- Replacement or refund for products not performing as stated on the datasheet
- Valid for 12 months from date of delivery
- Response to your inquiry within 24 hours
  
- We provide support in Chinese, English, French, German, Japanese and Spanish
- Extensive multi-media technical resources to help you
- We investigate all quality concerns to ensure our products perform to the highest standards

If the product does not perform as described on this datasheet, we will offer a refund or replacement. For full details of the Abpromise, please visit <https://www.abcam.cn/abpromise> or contact our technical team.

### **Terms and conditions**

---

- Guarantee only valid for products bought direct from Abcam or one of our authorized distributors