

Anti-Fibulin 5 antibody [EPR4506] ab109428

重组 RabMAb

5 References **4 图像**

概述

| | |
|-------|--|
| 产品名称 | Anti-Fibulin 5抗体[EPR4506] |
| 描述 | 兔单克隆抗体[EPR4506] to Fibulin 5 |
| 宿主 | Rabbit |
| 经测试应用 | 适用于: WB |
| 种属反应性 | 与反应: Mouse, Human |
| 免疫原 | Recombinant fragment corresponding to Human Fibulin 5 aa 250 to the C-terminus (internal sequence). |
| 阳性对照 | WB: Human fetal lung, fetal kidney, fetal spleen and testis tissue lysates. Mouse heart, brain and kidney tissue lysates. |
| 常规说明 | <p>This product is a recombinant monoclonal antibody, which offers several advantages including:</p> <ul style="list-style-type: none"> - High batch-to-batch consistency and reproducibility - Improved sensitivity and specificity - Long-term security of supply - Animal-free production <p>For more information see here.</p> <p>Our RabMAb[®] technology is a patented hybridoma-based technology for making rabbit monoclonal antibodies. For details on our patents, please refer to RabMAb[®] patents.</p> <p>Rat: We have preliminary internal testing data to indicate this antibody may not react with this species. Please contact us for more information.</p> |

性能

| | |
|------|---|
| 形式 | Liquid |
| 存放说明 | Shipped at 4°C. Store at +4°C short term (1-2 weeks). Upon delivery aliquot. Store at -20°C. Stable for 12 months at -20°C. |
| 存储溶液 | <p>pH: 7.20</p> <p>Preservative: 0.01% Sodium azide</p> <p>Constituents: 40% Glycerol (glycerin, glycerine), 59% PBS, 0.05% BSA</p> |
| 纯度 | Protein A purified |

| | |
|------|---------|
| 克隆 | 单克隆 |
| 克隆编号 | EPR4506 |
| 同种型 | IgG |

应用

The Abpromise guarantee

Abpromise™承诺保证使用ab109428于以下的经测试应用

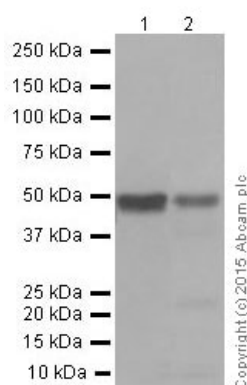
“应用说明”部分 下显示的仅为推荐的起始稀释度;实际最佳的稀释度/浓度应由使用者检定。

| 应用 | Ab评论 | 说明 |
|----|------|---|
| WB | | 1/1000 - 1/10000. Predicted molecular weight: 50 kDa. |

靶标

| | |
|-------|---|
| 功能 | Promotes adhesion of endothelial cells through interaction of integrins and the RGD motif. Could be a vascular ligand for integrin receptors and may play a role in vascular development and remodeling. |
| 组织特异性 | Expressed predominantly in heart, ovary, and colon but also in kidney, pancreas, testis, lung and placenta. Not detectable in brain, liver, thymus, prostate, or peripheral blood leukocytes. |
| 疾病相关 | <p>Defects in FBLN5 are a cause of autosomal dominant cutis laxa (ADCL) [MIM:123700]. Hereditary cutis laxa refers to a heterogeneous group of connective tissue disorders characterized by cutaneous abnormalities and variable systemic manifestations. The most constant clinical feature is loose skin, sagging over the face and trunk. Hereditary cutis laxa is inherited in both autosomal dominant and autosomal recessive modes. Autosomal dominant cutis laxa is a relatively benign inherited and acquired connective tissue disorder.</p> <p>Defects in FBLN5 are a cause of cutis laxa autosomal recessive type 1 (ARCL1) [MIM:219100]. Hereditary cutis laxa refers to a heterogeneous group of connective tissue disorders characterized by cutaneous abnormalities and variable systemic manifestations. The most constant clinical feature is loose skin, sagging over the face and trunk. Hereditary cutis laxa is inherited in both autosomal dominant and autosomal recessive modes. ARCL1 shows the most severe phenotype and has the poorest prognosis. In addition to the skin, internal organs enriched in elastic fibers, such as the lung and arteries, are affected.</p> <p>Defects in FBLN5 are the cause of age-related macular degeneration type 3 (ARMD3) [MIM:608895]. ARMD is a multifactorial disease and the most common cause of irreversible vision loss in the developed world. In most patients, the disease is manifest as ophthalmoscopically visible yellowish accumulations of protein and lipid (known as drusen) that lie beneath the retinal pigment epithelium and within an elastin-containing structure known as Bruch membrane.</p> |
| 序列相似性 | <p>Belongs to the fibulin family.</p> <p>Contains 6 EGF-like domains.</p> |
| 细胞定位 | Secreted. |

图片



Western blot - Anti-Fibulin 5 antibody [EPR4506]
(ab109428)

All lanes : Anti-Fibulin 5 antibody [EPR4506] (ab109428) at 1/1000 dilution (purified)

Lane 1 : Human fetal kidney tissue lysate

Lane 2 : Human fetal spleen tissue lysate

Lysates/proteins at 20 µg per lane.

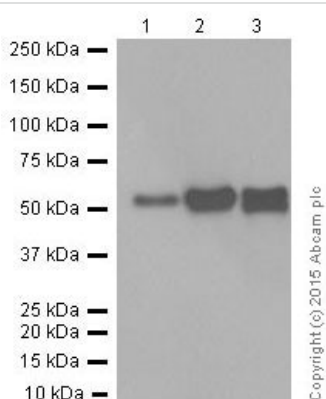
Secondary

All lanes : HRP-conjugated anti-rabbit IgG, specific to the non-reduced form of IgG at 1/5000 dilution

Predicted band size: 50 kDa

Observed band size: 50-60 kDa

Blocking and dilution buffer: 5% NFDM/TBST.



Western blot - Anti-Fibulin 5 antibody [EPR4506]
(ab109428)

All lanes : Anti-Fibulin 5 antibody [EPR4506] (ab109428) at 1/1000 dilution (purified)

Lane 1 : Mouse brain tissue lysate

Lane 2 : Mouse heart tissue lysate

Lane 3 : Mouse kidney tissue lysate

Lysates/proteins at 20 µg per lane.

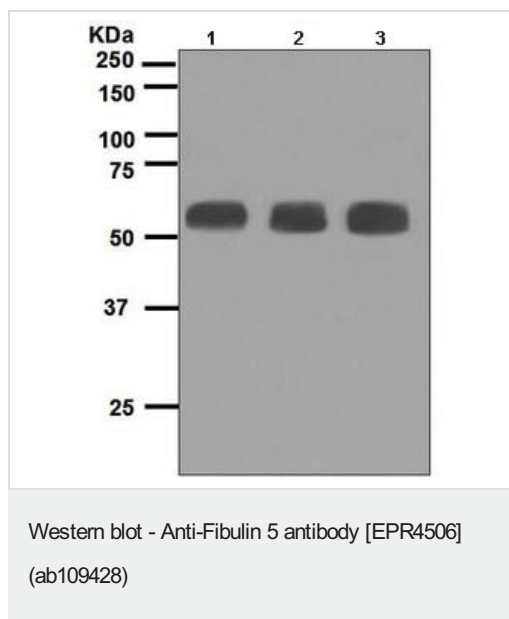
Secondary

All lanes : Goat Anti-Rabbit IgG H&L (HRP) (**ab97051**) at 1/10000 dilution

Predicted band size: 50 kDa

Observed band size: 50-60 kDa

Blocking and dilution buffer: 5% NFDM/TBST.



All lanes : Anti-Fibulin 5 antibody [EPR4506] (ab109428) at 1/1000 dilution (unpurified)

Lane 1 : Fetal lung lysate

Lane 2 : Fetal kidney lysate

Lane 3 : Human testis lysate

Lysates/proteins at 10 µg per lane.

Predicted band size: 50 kDa

Why choose a recombinant antibody?

Research with confidence
Consistent and reproducible results

Long-term and scalable supply
Recombinant technology

Success from the first experiment
Confirmed specificity

Ethical standards compliant
Animal-free production

Anti-Fibulin 5 antibody [EPR4506] (ab109428)

Please note: All products are "FOR RESEARCH USE ONLY. NOT FOR USE IN DIAGNOSTIC PROCEDURES"

Our Abpromise to you: Quality guaranteed and expert technical support

- Replacement or refund for products not performing as stated on the datasheet
- Valid for 12 months from date of delivery
- Response to your inquiry within 24 hours
- We provide support in Chinese, English, French, German, Japanese and Spanish
- Extensive multi-media technical resources to help you
- We investigate all quality concerns to ensure our products perform to the highest standards

If the product does not perform as described on this datasheet, we will offer a refund or replacement. For full details of the Abpromise, please visit <https://www.abcam.cn/abpromise> or contact our technical team.

Terms and conditions

- Guarantee only valid for products bought direct from Abcam or one of our authorized distributors