

# Anti-Fibroblast activation protein, alpha antibody ab28244

★★★★★ [2 Abreviews](#) [57 References](#) [1 图像](#)

### 概述

<b>产品名称</b>	Anti-Fibroblast activation蛋白, alpha抗体
<b>描述</b>	兔多克隆抗体to Fibroblast activation蛋白, alpha
<b>宿主</b>	Rabbit
<b>特异性</b>	This antibody recognizes the Stalk Region of both long isoforms of Fibroblast activation protein, alpha but does not recognize other DPP family members.
<b>经测试应用</b>	<b>适用于:</b> WB
<b>种属反应性</b>	<b>与反应:</b> Recombinant fragment
<b>免疫原</b>	Synthetic peptide within Human Fibroblast activation protein, alpha. The exact sequence is proprietary.
<b>常规说明</b>	<p>The Life Science industry has been in the grips of a reproducibility crisis for a number of years. Abcam is leading the way in addressing this with our range of recombinant monoclonal antibodies and knockout edited cell lines for gold-standard validation. Please check that this product meets your needs before purchasing.</p> <p>If you have any questions, special requirements or concerns, please send us an inquiry and/or contact our Support team ahead of purchase. Recommended alternatives for this product can be found below, along with publications, customer reviews and Q&amp;As</p>

### 性能

<b>形式</b>	Liquid
<b>存放说明</b>	Shipped at 4°C. Upon delivery aliquot and store at -20°C. Avoid freeze / thaw cycles.
<b>存储溶液</b>	Preservative: 0.05% Sodium azide Constituent: 50% Glycerol
<b>纯度</b>	Immunogen affinity purified
<b>克隆</b>	多克隆
<b>同种型</b>	IgG

### 应用

The Abpromise guarantee

**Abpromise™**承诺保证使用ab28244于以下的经测试应用

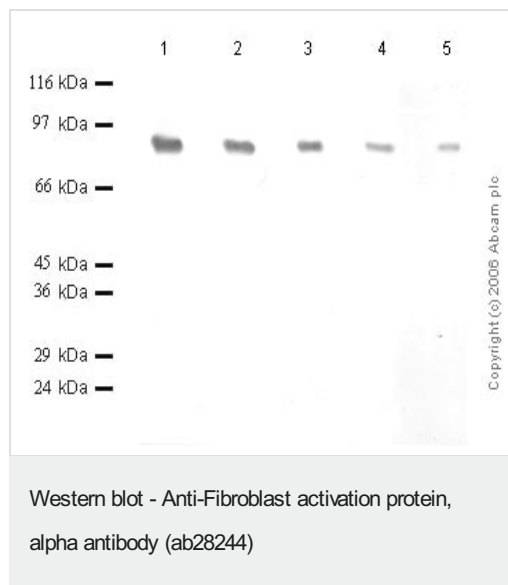
“应用说明”部分 下显示的仅为推荐的起始稀释度;实际最佳的稀释度/浓度应由使用者检定。

应用	Ab评论	说明
WB	★★★★★ (1)	1/1000 - 1/5000. Detects a band of approximately 110-120 kDa (predicted molecular weight: 88 kDa). 1/1000 when using colorimetric substrates such as BCIP/NBT - 1/5000 when using chemiluminescent substrates. Note: EDTA/EGTA treatment of tissues or lysates is required to see latent zymogen. Dilution optimised using Chromogenic detection.

## 靶标

<b>功能</b>	In association with DPP4 is involved in the pericellular proteolysis of the extracellular matrix (ECM), the migration and invasion of endothelial cells into the ECM. May have a role in tissue remodeling during development and wound healing, and may contribute to invasiveness in malignant cancers.
<b>组织特异性</b>	Fibroblast specific.
<b>序列相似性</b>	Belongs to the peptidase S9B family.
<b>翻译后修饰</b>	N-glycosylated. The N-terminus may be blocked.
<b>细胞定位</b>	Cell membrane. Cell projection > lamellipodium membrane. Cell projection > invadopodium membrane. Found in cell surface lamellipodia, invadopodia and on shed vesicles. Colocalized with DPP4 in invadopodia and lamellipodia of migratory activated endothelial cells in collagenous matrix. Colocalized with DPP4 on endothelial cells of capillary-like microvessels but not large vessels within invasive breast ductal carcinoma.

## 图片



**All lanes :** Anti-Fibroblast activation protein, alpha antibody (ab28244) at 1/1000 dilution

**Lane 1 :** Recombinant Human FAPalpha at 0.08 µg

**Lane 2 :** Recombinant Human FAPalpha at 0.04 µg

**Lane 3 :** Recombinant Human FAPalpha at 0.02 µg

**Lane 4 :** Recombinant Human FAPalpha at 0.01 µg

**Lane 5 :** Recombinant Human FAPalpha at 0.005 µg

**Predicted band size:** 88 kDa

**Please note:** All products are "FOR RESEARCH USE ONLY. NOT FOR USE IN DIAGNOSTIC PROCEDURES"

## **Our Abpromise to you: Quality guaranteed and expert technical support**

---

- Replacement or refund for products not performing as stated on the datasheet
- Valid for 12 months from date of delivery
- Response to your inquiry within 24 hours
  
- We provide support in Chinese, English, French, German, Japanese and Spanish
- Extensive multi-media technical resources to help you
- We investigate all quality concerns to ensure our products perform to the highest standards

If the product does not perform as described on this datasheet, we will offer a refund or replacement. For full details of the Abpromise, please visit <https://www.abcam.cn/abpromise> or contact our technical team.

## **Terms and conditions**

---

- Guarantee only valid for products bought direct from Abcam or one of our authorized distributors