

# Anti-Fibrinogen gamma chain antibody ab96532

[4 References](#) [2 图像](#)

### 概述

产品名称	Anti-Fibrinogen gamma chain抗体
描述	兔多克隆抗体to Fibrinogen gamma chain
宿主	Rabbit
经测试应用	适用于: WB, ICC/IF
种属反应性	与反应: Human 预测可用于: Mouse, Rat 
免疫原	Recombinant protein fragment corresponding to a region within amino acids 1-415 of Human Fibrinogen gamma chain isoform Gamma A (NP_000500)
阳性对照	293T; A431; H1299; HeLa; or Raji cell lysates. Molt whole cell lysate. HeLa cells.
常规说明	<p>The Life Science industry has been in the grips of a reproducibility crisis for a number of years. Abcam is leading the way in addressing this with our range of recombinant monoclonal antibodies and knockout edited cell lines for gold-standard validation. Please check that this product meets your needs before purchasing.</p> <p>If you have any questions, special requirements or concerns, please send us an inquiry and/or contact our Support team ahead of purchase. Recommended alternatives for this product can be found below, along with publications, customer reviews and Q&amp;As</p>

### 性能

形式	Liquid
存放说明	Shipped at 4°C. Upon delivery aliquot and store at -20°C or -80°C. Avoid repeated freeze / thaw cycles.
存储溶液	pH: 7.00 Preservative: 0.01% Thimerosal (merthiolate) Constituents: 1.21% Tris, 0.75% Glycine, 10% Glycerol (glycerin, glycerine)
纯度	Immunogen affinity purified
克隆	多克隆
同种型	IgG

### 应用

## The Abpromise guarantee

**Abpromise™** 承诺保证使用 ab96532 于以下的经测试应用

“应用说明”部分 下显示的仅为推荐的起始稀释度;实际最佳的稀释度/浓度应由使用者检定。

应用	Ab评论	说明
WB		1/500 - 1/3000. Predicted molecular weight: 50 kDa.
ICC/IF		1/100 - 1/200.

## 靶标

**功能** Fibrinogen has a double function: yielding monomers that polymerize into fibrin and acting as a cofactor in platelet aggregation.

**疾病相关** Defects in FGG are a cause of thrombophilia.  
Defects in FGG are a cause of congenital afibrinogenemia (CAFBN) [MIM:202400]. It is a rare autosomal recessive disorder characterized by complete absence of detectable fibrinogen.

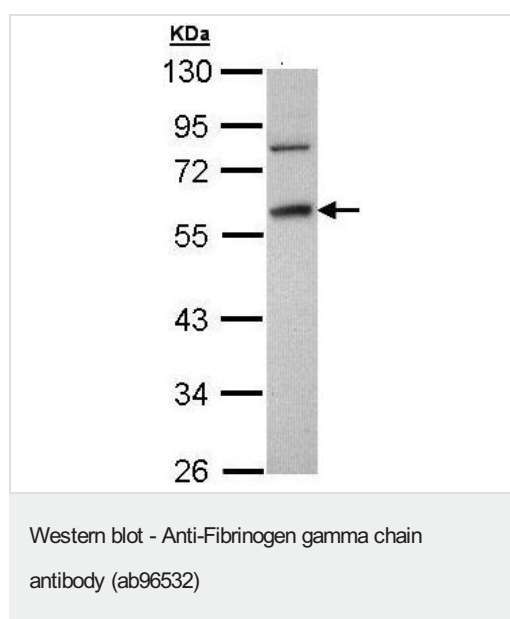
**序列相似性** Contains 1 fibrinogen C-terminal domain.

**结构域** A long coiled coil structure formed by 3 polypeptide chains connects the central nodule to the C-terminal domains (distal nodules). The long C-terminal ends of the alpha chains fold back, contributing a fourth strand to the coiled coil structure.

**翻译后修饰** Conversion of fibrinogen to fibrin is triggered by thrombin, which cleaves fibrinopeptides A and B from alpha and beta chains, and thus exposes the N-terminal polymerization sites responsible for the formation of the soft clot. The soft clot is converted into the hard clot by factor XIIIa which catalyzes the epsilon-(gamma-glutamyl)lysine cross-linking between gamma chains (stronger) and between alpha chains (weaker) of different monomers.  
Sulfation of C-terminal tyrosines increases affinity for thrombin.

**细胞定位** Secreted.

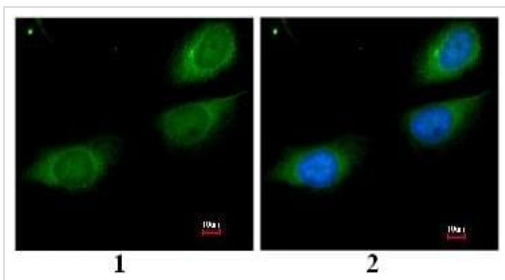
## 图片



Anti-Fibrinogen gamma chain antibody (ab96532) at 1/1000 dilution (10% SDS PAGE) + MOLT4 whole cell lysate at 30 µg

**Predicted band size:** 50 kDa

10% SDS PAGE



Immunofluorescence analysis of paraformaldehyde fixed HeLa using ab96532 at 1/200 dilution: (1) without DNA probe, (2) merged with DNA probe.

Immunocytochemistry/ Immunofluorescence - Anti-Fibrinogen gamma chain antibody (ab96532)

**Please note:** All products are "FOR RESEARCH USE ONLY. NOT FOR USE IN DIAGNOSTIC PROCEDURES"

### Our Abpromise to you: Quality guaranteed and expert technical support

---

- Replacement or refund for products not performing as stated on the datasheet
- Valid for 12 months from date of delivery
- Response to your inquiry within 24 hours
- We provide support in Chinese, English, French, German, Japanese and Spanish
- Extensive multi-media technical resources to help you
- We investigate all quality concerns to ensure our products perform to the highest standards

If the product does not perform as described on this datasheet, we will offer a refund or replacement. For full details of the Abpromise, please visit <https://www.abcam.cn/abpromise> or contact our technical team.

### Terms and conditions

---

- Guarantee only valid for products bought direct from Abcam or one of our authorized distributors