


Anti-Fibrinogen antibody ab34269

★★★★★ **14 Abreviews** **55 References** **4 图像**

概述

产品名称	Anti-Fibrinogen抗体
描述	兔多克隆抗体to Fibrinogen
宿主	Rabbit
经测试应用	适用于: IHC-P, ICC/IF, Functional Studies, Sandwich ELISA
种属反应性	与反应: Mouse, Rabbit, Human 预测可用于: Rat 
免疫原	Full length native protein (purified) corresponding to Human Fibrinogen.
常规说明	<p>The Life Science industry has been in the grips of a reproducibility crisis for a number of years. Abcam is leading the way in addressing this with our range of recombinant monoclonal antibodies and knockout edited cell lines for gold-standard validation. Please check that this product meets your needs before purchasing.</p> <p>If you have any questions, special requirements or concerns, please send us an inquiry and/or contact our Support team ahead of purchase. Recommended alternatives for this product can be found below, along with publications, customer reviews and Q&As</p>

性能

形式	Liquid
存放说明	Shipped at 4°C. Store at +4°C short term (1-2 weeks). Upon delivery aliquot. Store at -20°C long term.
存储溶液	Constituent: Whole serum
纯度	Whole antiserum
克隆	多克隆
同种型	IgG

应用

The Abpromise guarantee **Abpromise™**承诺保证使用ab34269于以下的经测试应用

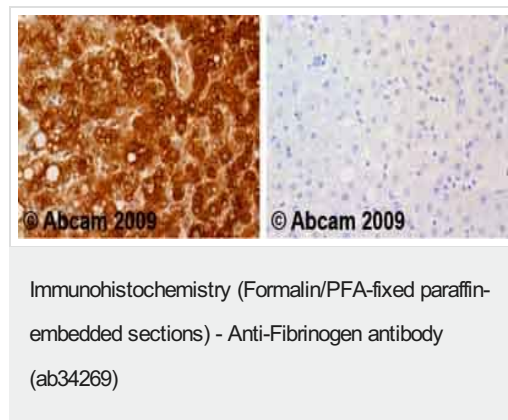
“应用说明”部分 下显示的仅为推荐的起始稀释度;实际最佳的稀释度/浓度应由使用者检定。

应用	Ab评论	说明
IHC-P	★★★★☆ (8)	1/50. Perform heat mediated antigen retrieval before commencing with IHC staining protocol.
ICC/IF		Use at an assay dependent concentration.
Functional Studies		Use at an assay dependent concentration. This antibody has been tested in plasma clotting assays. The plasma clotting time was prolonged (but not completely neutralized) by the antibody. Testing has indicated that these neutralisation assays work only when this antibody has been protein A column purified first.
Sandwich ELISA		1/200. For sandwich ELISA, use this antibody as Detection at 1/200 dilution with Mouse monoclonal [1F7] to Fibrinopeptide A (ab14790) as Capture.

靶标

功能	Fibrinogen has a double function: yielding monomers that polymerize into fibrin and acting as a cofactor in platelet aggregation.
组织特异性	Plasma.
疾病相关	Defects in FGA are a cause of congenital afibrinogenemia (CAFBN) [MIM:202400]. This is a rare autosomal recessive disorder characterized by bleeding that varies from mild to severe and by complete absence or extremely low levels of plasma and platelet fibrinogen. Note=The majority of cases of afibrinogenemia are due to truncating mutations. Variations in position Arg-35 (the site of cleavage of fibrinopeptide a by thrombin) leads to alpha-dysfibrinogenemias. Defects in FGA are a cause of amyloidosis type 8 (AMYL8) [MIM:105200]; also known as systemic non-neuropathic amyloidosis or Ostertag-type amyloidosis. AMYL8 is a hereditary generalized amyloidosis due to deposition of apolipoprotein A1, fibrinogen and lysozyme amyloids. Viscera are particularly affected. There is no involvement of the nervous system. Clinical features include renal amyloidosis resulting in nephrotic syndrome, arterial hypertension, hepatosplenomegaly, cholestasis, petechial skin rash.
序列相似性	Contains 1 fibrinogen C-terminal domain.
结构域	A long coiled coil structure formed by 3 polypeptide chains connects the central nodule to the C-terminal domains (distal nodules). The long C-terminal ends of the alpha chains fold back, contributing a fourth strand to the coiled coil structure.
翻译后修饰	The alpha chain is not glycosylated. Forms F13A-mediated cross-links between a glutamine and the epsilon-amino group of a lysine residue, forming fibronectin-fibrinogen heteropolymers. About one-third of the alpha chains in the molecules in blood were found to be phosphorylated. Conversion of fibrinogen to fibrin is triggered by thrombin, which cleaves fibrinopeptides A and B from alpha and beta chains, and thus exposes the N-terminal polymerization sites responsible for the formation of the soft clot. The soft clot is converted into the hard clot by factor XIIIa which catalyzes the epsilon-(gamma-glutamyl)lysine cross-linking between gamma chains (stronger) and between alpha chains (weaker) of different monomers. Phosphorylation sites are present in the extracellular medium.

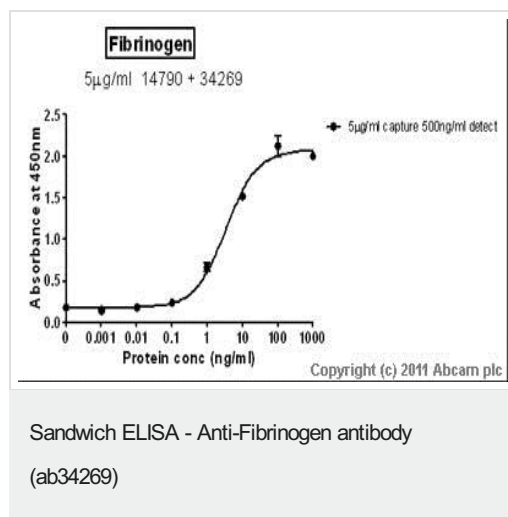
图片



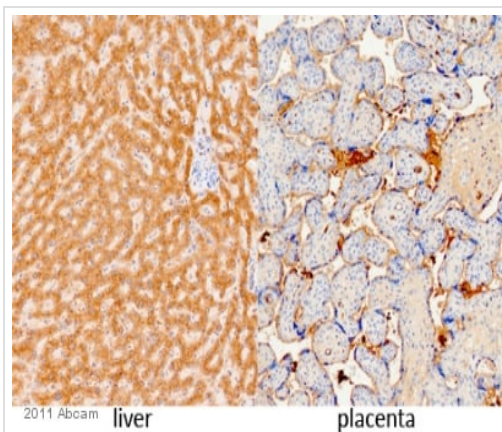
Ab34269 staining human liver. Staining is localized to the cytoplasm.

Left panel: with primary antibody at 1/50. Right panel: isotype control.

Sections were stained using an automated system (Dako PT Link), at room temperature. Sections were rehydrated and antigen retrieved with the Dako 3-in-1 antigen retrieval buffer, citrate pH 6.0. Slides were peroxidase blocked in 3% H₂O₂ in methanol for 10 minutes. They were then blocked with Dako Protein block for 10 minutes (containing casein 0.25% in PBS) then incubated with primary antibody for 20 minutes and detected with Dako Envision Flex amplification kit for 30 minutes. Colorimetric detection was completed with diaminobenzidine for 5 minutes. Slides were counterstained with Haematoxylin and coverslipped under DePeX. Please note that for manual staining we recommend to optimize the primary antibody concentration and incubation time (overnight incubation), and amplification may be required.



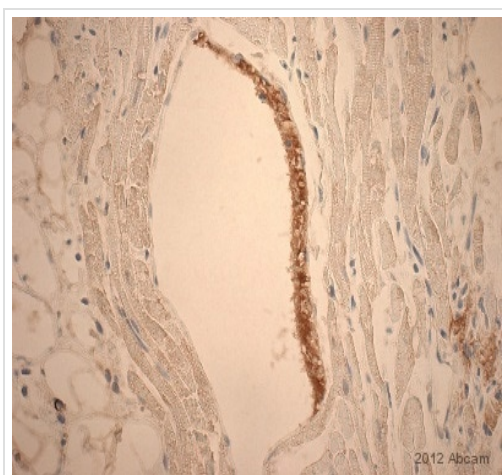
Standard Curve for Fibrinogen (Analyte: **Fibrinogen protein (Human) (ab84410)**); dilution range 1pg/ml to 1µg/ml using Capture Antibody **Mouse monoclonal [1F7] to Fibrinopeptide A (ab14790)** at 5µg/ml and Detector Antibody **Rabbit polyclonal to Fibrinogen (ab34269)** at 1/2000.



Immunohistochemistry (Formalin/PFA-fixed paraffin-embedded sections) - Anti-Fibrinogen antibody (ab34269)

This image is courtesy of an anonymous Abreview.

ab34269 staining Fibrinogen in Human liver/placenta tissue by Immunohistochemistry (Formalin/PFA-fixed paraffin-embedded tissue sections). The sections were fixed in formaldehyde and subjected to heat-mediated antigen retrieval in citrate buffer, pH 6.0 for 20 minutes at 100°C. The primary antibody was diluted 1/2000 and incubated with the sample for 20 minutes at 25°C. An HRP polymer-conjugated mouse anti-rabbit polyclonal IgG was used as the secondary antibody.



Immunohistochemistry (Formalin/PFA-fixed paraffin-embedded sections) - Anti-Fibrinogen antibody (ab34269)

This image is courtesy of an anonymous Abreview

Immunohistochemical analysis of rat heart, staining Fibrinogen with ab34269.

Tissue was fixed with formaldehyde and blocked with 0.25% BSA for 15 minutes at room temperature; antigen retrieval was by heat mediation in citrate buffer. Samples were incubated with primary antibody (1.5 µg/ml in 1% BSA in TBS) for 20 minutes. An undiluted HRP-conjugated goat anti-rabbit polyclonal IgG was used as the secondary antibody.

Please note: All products are "FOR RESEARCH USE ONLY. NOT FOR USE IN DIAGNOSTIC PROCEDURES"

Our Abpromise to you: Quality guaranteed and expert technical support

- Replacement or refund for products not performing as stated on the datasheet
- Valid for 12 months from date of delivery
- Response to your inquiry within 24 hours

- We provide support in Chinese, English, French, German, Japanese and Spanish
- Extensive multi-media technical resources to help you
- We investigate all quality concerns to ensure our products perform to the highest standards

If the product does not perform as described on this datasheet, we will offer a refund or replacement. For full details of the Abpromise, please visit <https://www.abcam.cn/abpromise> or contact our technical team.

Terms and conditions

- Guarantee only valid for products bought direct from Abcam or one of our authorized distributors