

Anti-FHOD1 antibody ab73443

7 References **3 图像**

概述

产品名称	Anti-FHOD1抗体
描述	小鼠多克隆抗体to FHOD1
宿主	Mouse
经测试应用	适用于: WB, IHC-P
种属反应性	与反应: Human
免疫原	Recombinant full length protein within Human FHOD1. The exact immunogen sequence used to generate this antibody is proprietary information. If additional detail on the immunogen is needed to determine the suitability of the antibody for your needs, please <u>contact</u> our Scientific Support team to discuss your requirements.
阳性对照	K-562 cell lysate and FHOD1 transfected 293T cell lysate human spleen
常规说明	<p>The Life Science industry has been in the grips of a reproducibility crisis for a number of years. Abcam is leading the way in addressing this with our range of recombinant monoclonal antibodies and knockout edited cell lines for gold-standard validation. Please check that this product meets your needs before purchasing.</p> <p>If you have any questions, special requirements or concerns, please send us an inquiry and/or contact our Support team ahead of purchase. Recommended alternatives for this product can be found below, along with publications, customer reviews and Q&As</p>

性能

形式	Liquid
存放说明	Shipped at 4°C. Upon delivery aliquot and store at -20°C. Avoid freeze / thaw cycles.
存储溶液	pH: 7.40 Constituent: PBS
纯度	Protein A purified
克隆	多克隆
同种型	IgG

应用

The Abpromise guarantee

Abpromise™ 承诺保证使用ab73443于以下的经测试应用

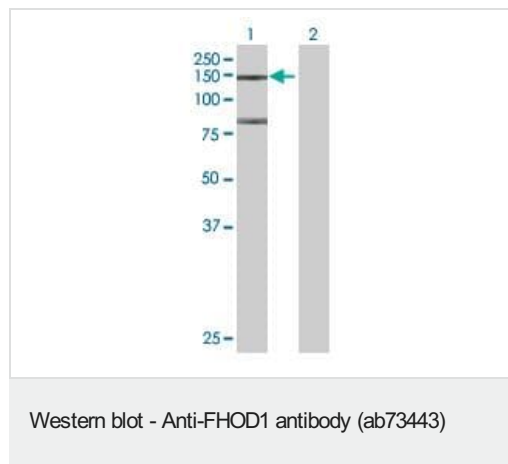
“应用说明”部分 下显示的仅为推荐的起始稀释度;实际最佳的稀释度/浓度应由使用者检定。

应用	Ab评论	说明
WB		1/500 - 1/1000. Predicted molecular weight: 127 kDa.
IHC-P		Use a concentration of 13 µg/ml.

靶标

功能	Required for the assembly of F-actin structures, such as stress fibers. Depends on the Rho-ROCK cascade for its activity. Contributes to the coordination of microtubules with actin fibers and plays a role in cell elongation.
组织特异性	Ubiquitous. Highly expressed in spleen.
序列相似性	Belongs to the formin homology family. Contains 1 FH1 (formin homology 1) domain. Contains 1 FH2 (formin homology 2) domain. Contains 1 GBD/FH3 (Rho GTPase-binding/formin homology 3) domain.
结构域	Regulated by intramolecular binding to a C-terminal auto-inhibitory domain. Effector binding abolishes this interaction and activates the protein.
细胞定位	Cytoplasm. Cytoplasm > cytoskeleton. Predominantly cytoplasmic.

图片



All lanes : Anti-FHOD1 antibody (ab73443) at 1/500 dilution

Lane 1 : FHOD1 transfected 293T cell lysate

Lane 2 : non-transfected lysate

Lysates/proteins at 25 µg per lane.

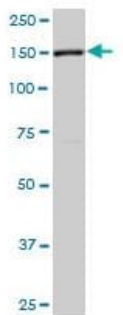
Secondary

All lanes : goat anti-mouse IgG(H&L)-HRP conjugate at 1/2500 dilution

Predicted band size: 127 kDa

Observed band size: 145 kDa

Additional bands at: 80 kDa. We are unsure as to the identity of these extra bands.



Western blot - Anti-FHOD1 antibody (ab73443)

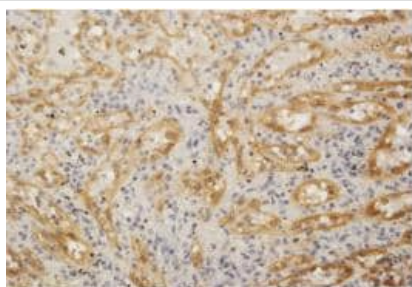
Anti-FHOD1 antibody (ab73443) at 1/500 dilution + K-562 cell lysate at 25 µg

Secondary

goat anti-mouse IgG (H&L)-HRP conjugate at 1/2500 dilution

Predicted band size: 127 kDa

Observed band size: 150 kDa



Immunohistochemistry (Formalin/PFA-fixed paraffin-embedded sections) - Anti-FHOD1 antibody (ab73443)

Immunoperoxidase staining of formalin-fixed paraffin-embedded human spleen using ab73443, at 3 µg/ml of purified version of the antibody.

Please note: All products are "FOR RESEARCH USE ONLY. NOT FOR USE IN DIAGNOSTIC PROCEDURES"

Our Abpromise to you: Quality guaranteed and expert technical support

- Replacement or refund for products not performing as stated on the datasheet
- Valid for 12 months from date of delivery
- Response to your inquiry within 24 hours
- We provide support in Chinese, English, French, German, Japanese and Spanish
- Extensive multi-media technical resources to help you
- We investigate all quality concerns to ensure our products perform to the highest standards

If the product does not perform as described on this datasheet, we will offer a refund or replacement. For full details of the Abpromise, please visit <https://www.abcam.cn/abpromise> or contact our technical team.

Terms and conditions

- Guarantee only valid for products bought direct from Abcam or one of our authorized distributors