


Anti-FGFR4 (phospho Y642) antibody ab192589

[3 References](#) [1 图像](#)

概述

产品名称	Anti-FGFR4 (phospho Y642)抗体
描述	兔多克隆抗体to FGFR4 (phospho Y642)
宿主	Rabbit
经测试应用	适用于: WB
种属反应性	与反应: Human 预测可用于: Mouse, Rat 
免疫原	Synthetic peptide corresponding to Human FGFR4 (phospho Y642) conjugated to Keyhole Limpet Haemocyanin (KLH). Peptide sequence around phosphorylation site of tyrosine 642 (LD-Y(p)-Y-K). NP_002002.3 Database link: P22455
阳性对照	WB: JK cell extracts.
常规说明	<p>The Life Science industry has been in the grips of a reproducibility crisis for a number of years. Abcam is leading the way in addressing this with our range of recombinant monoclonal antibodies and knockout edited cell lines for gold-standard validation. Please check that this product meets your needs before purchasing.</p> <p>If you have any questions, special requirements or concerns, please send us an inquiry and/or contact our Support team ahead of purchase. Recommended alternatives for this product can be found below, along with publications, customer reviews and Q&As</p>

性能

形式	Liquid
存放说明	Shipped at 4°C. Store at +4°C short term (1-2 weeks). Upon delivery aliquot. Store at -20°C long term. Avoid freeze / thaw cycle.
存储溶液	pH: 7.40 Preservative: 0.02% Sodium azide Constituents: 50% Glycerol, 0.87% Sodium chloride, 49% PBS
纯度	PBS (without Mg ²⁺ and Ca ²⁺)
纯化说明	Immunogen affinity purified ab192589 was purified by affinity-chromatography using epitope-specific phosphopeptide. Non-

phospho specific antibodies were removed by chromatography using non-phosphopeptide.

克隆 多克隆
同种型 IgG

应用

The Abpromise guarantee **Abpromise™**承诺保证使用ab192589于以下的经测试应用

“应用说明”部分 下显示的仅为推荐的起始稀释度;实际最佳的稀释度/浓度应由使用者检定。

应用	Ab评论	说明
WB		1/500 - 1/1000. Predicted molecular weight: 88 kDa.

靶标

功能 Receptor for acidic fibroblast growth factor. Does not bind to basic fibroblast growth factor. Binds FGF19.

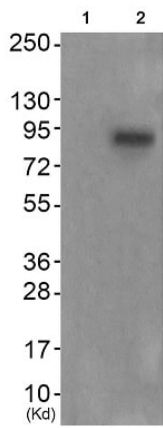
组织特异性 Expressed in gastrointestinal epithelial cells, pancreas, and gastric and pancreatic cancer cell lines.

序列相似性 Belongs to the protein kinase superfamily. Tyr protein kinase family. Fibroblast growth factor receptor subfamily.
Contains 3 Ig-like C2-type (immunoglobulin-like) domains.
Contains 1 protein kinase domain.

翻译后修饰 Glycosylated.
Phosphorylated on tyrosine residue (By similarity). Phosphorylation requires the presence of a functional (phosphorylated) FGFR1 and not necessarily by means of FGFR heterodimerization.

细胞定位 Membrane. Isoform 2 may be secreted.

图片



Western blot - Anti-FGFR4 (phospho Y642) antibody (ab192589)

All lanes : Anti-FGFR4 (phospho Y642) antibody (ab192589) at 1/500 dilution

Lane 1 : JK cell extract with antigen specific peptide

Lane 2 : JK cell extract

Predicted band size: 88 kDa

Please note: All products are "FOR RESEARCH USE ONLY. NOT FOR USE IN DIAGNOSTIC PROCEDURES"

Our Abpromise to you: Quality guaranteed and expert technical support

- Replacement or refund for products not performing as stated on the datasheet
- Valid for 12 months from date of delivery
- Response to your inquiry within 24 hours
- We provide support in Chinese, English, French, German, Japanese and Spanish
- Extensive multi-media technical resources to help you
- We investigate all quality concerns to ensure our products perform to the highest standards

If the product does not perform as described on this datasheet, we will offer a refund or replacement. For full details of the Abpromise, please visit <https://www.abcam.cn/abpromise> or contact our technical team.

Terms and conditions

- Guarantee only valid for products bought direct from Abcam or one of our authorized distributors