


### Anti-FGF5 antibody ab88118

★★★★★ [2 Abreviews](#) [5 References](#) [2 图像](#)

#### 概述

产品名称	Anti-FGF5抗体
描述	兔多克隆抗体to FGF5
宿主	Rabbit
特异性	From Jan 2024, QC testing of replenishment batches of this polyclonal changed. All tested and expected application and reactive species combinations are still covered by our Abcam product promise. However, we no longer test all applications. For more information on a specific batch, please contact our Scientific Support who will be happy to help.
经测试应用	适用于: WB, ICC/IF
种属反应性	与反应: Mouse, Human 预测可用于: Rabbit, Cow, Dog 
免疫原	Synthetic peptide corresponding to Human FGF5 aa 1-100 conjugated to keyhole limpet haemocyanin. (Peptide available as <a href="#">ab106210</a> )
阳性对照	Recombinant human FGF5 protein ( <a href="#">ab50229</a> ) can be used as a positive control in WB. This antibody gave a positive signal in the following tissues lysates: E14 Mouse Embryo Brain; E16 Ms Embryo Brain; E18 Ms Embryo Brain ICC/IF: NIH3T3 cells.
常规说明	<p>The Life Science industry has been in the grips of a reproducibility crisis for a number of years. Abcam is leading the way in addressing this with our range of recombinant monoclonal antibodies and knockout edited cell lines for gold-standard validation. Please check that this product meets your needs before purchasing.</p> <p>If you have any questions, special requirements or concerns, please send us an inquiry and/or contact our Support team ahead of purchase. Recommended alternatives for this product can be found below, along with publications, customer reviews and Q&amp;As</p>

#### 性能

形式	Liquid
存放说明	Shipped at 4°C. Store at +4°C short term (1-2 weeks). Upon delivery aliquot. Store at -20°C or -80°C. Avoid freeze / thaw cycle.
存储溶液	pH: 7.40 Preservative: 0.02% Sodium azide

Constituent: PBS

Batches of this product that have a concentration < 1mg/ml may have BSA added as a stabilising agent. If you would like information about the formulation of a specific lot, please contact our scientific support team who will be happy to help.

**纯度** Immunogen affinity purified  
**克隆** 多克隆  
**同种型** IgG

## 应用

**The Abpromise guarantee** Abpromise™ 承诺保证使用ab88118于以下的经测试应用

“应用说明”部分 下显示的仅为推荐的起始稀释度;实际最佳的稀释度/浓度应由使用者检定。

应用	Ab评论	说明
WB	★★★★★ (1)	Use a concentration of 1 µg/ml. Detects a band of approximately 30 kDa (predicted molecular weight: 30 kDa).
ICC/IF		Use a concentration of 5 µg/ml.

## 靶标

**功能** Functions as an inhibitor of hair elongation by promoting progression from anagen, the growth phase of the hair follicle, into catagen the apoptosis-induced regression phase.

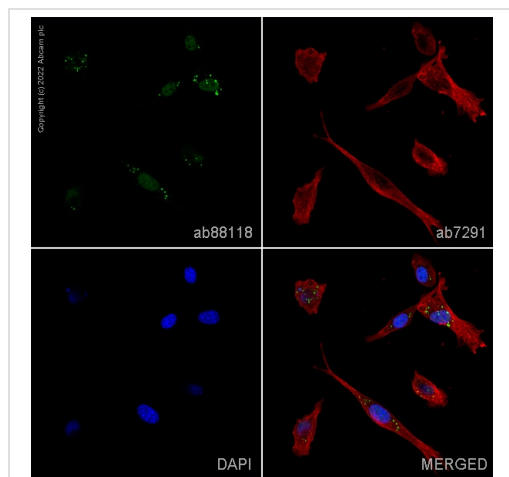
**组织特异性** Expressed in neonatal brain.

**序列相似性** Belongs to the heparin-binding growth factors family.

**发展阶段** Can transform NIH 3T3 cells.

**细胞定位** Secreted.

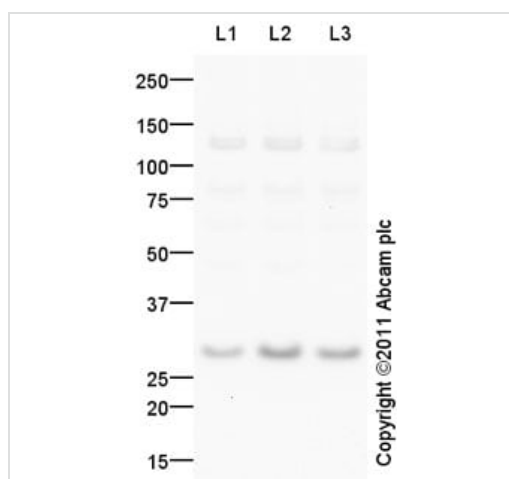
## 图片



Immunocytochemistry/ Immunofluorescence - Anti-FGF5 antibody (ab88118)

ab88118 staining FGF5 in NIH3T3 cells. The cells were fixed with 4% paraformaldehyde (10 min), permeabilized with 0.1% PBS-Tween for 5 minutes and then blocked with 1% BSA/10% normal goat serum/0.3M glycine in 0.1%PBS-Tween for 1h. The cells were then incubated overnight at 4°C with ab88118 at 1µg/ml and **ab7291**, Mouse monoclonal [DM1A] to alpha Tubulin - Loading Control. Cells were then incubated with **ab150081**, Goat polyclonal Secondary Antibody to Rabbit IgG - H&L (Alexa Fluor® 488), pre-adsorbed at 1/1000 dilution (shown in green) and **ab150120**, Goat polyclonal Secondary Antibody to Mouse IgG - H&L (Alexa Fluor® 594), pre-adsorbed at 1/1000 dilution (shown in pseudocolour red). Nuclear DNA was labelled with DAPI (shown in blue).

Image was acquired with a high-content analyser (Operetta CLS, Perkin Elmer) and a maximum intensity projection of confocal sections is shown.



Western blot - Anti-FGF5 antibody (ab88118)

**All lanes :** Anti-FGF5 antibody (ab88118) at 1 µg/ml

**Lane 1 :** E14 Mouse Embryo Brain Tissue Lysate

**Lane 2 :** E16 Ms Embryo Brain Tissue Lysate

**Lane 3 :** E18 Ms Embryo Brain Tissue Lysate

Lysates/proteins at 10 µg per lane.

#### Secondary

**All lanes :** Goat Anti-Rabbit IgG H&L (HRP) preadsorbed (**ab97080**) at 1/5000 dilution

Developed using the ECL technique.

Performed under reducing conditions.

**Predicted band size:** 30 kDa

**Observed band size:** 30 kDa

**Additional bands at:** 125 kDa. We are unsure as to the identity of these extra bands.

**Exposure time:** 2 minutes

**Please note:** All products are "FOR RESEARCH USE ONLY. NOT FOR USE IN DIAGNOSTIC PROCEDURES"

**Our Abpromise to you: Quality guaranteed and expert technical support**

- 
- Replacement or refund for products not performing as stated on the datasheet
  - Valid for 12 months from date of delivery
  - Response to your inquiry within 24 hours
  
  - We provide support in Chinese, English, French, German, Japanese and Spanish
  - Extensive multi-media technical resources to help you
  - We investigate all quality concerns to ensure our products perform to the highest standards

If the product does not perform as described on this datasheet, we will offer a refund or replacement. For full details of the Abpromise, please visit <https://www.abcam.cn/abpromise> or contact our technical team.

#### **Terms and conditions**

---

- Guarantee only valid for products bought direct from Abcam or one of our authorized distributors