


Anti-FGF22 antibody ab74860

2 References **3 图像**

概述

产品名称	Anti-FGF22抗体
描述	兔多克隆抗体to FGF22
宿主	Rabbit
经测试应用	适用于: WB, IHC-P, ICC/IF
种属反应性	与反应: Human 预测可用于: Mouse, Rat 
免疫原	Synthetic peptide derived from internal sequence of human FGF22.
阳性对照	Human ovary tissue. Extracts from Jurkat cells and HT-29 cells. MCF-7 cells.
常规说明	<p>The Life Science industry has been in the grips of a reproducibility crisis for a number of years. Abcam is leading the way in addressing this with our range of recombinant monoclonal antibodies and knockout edited cell lines for gold-standard validation. Please check that this product meets your needs before purchasing.</p> <p>If you have any questions, special requirements or concerns, please send us an inquiry and/or contact our Support team ahead of purchase. Recommended alternatives for this product can be found below, along with publications, customer reviews and Q&As</p>

性能

形式	Liquid
存放说明	Shipped at 4°C. Upon delivery aliquot and store at -20°C. Avoid freeze / thaw cycles.
存储溶液	<p>pH: 7.40</p> <p>Preservative: 0.02% Sodium azide</p> <p>Constituents: 50% Glycerol (glycerin, glycerine), 0.87% Sodium chloride, PBS</p>
纯度	Without Mg2+ and Ca2+
克隆	Immunogen affinity purified
同种型	多克隆
	IgG

应用

The Abpromise guarantee

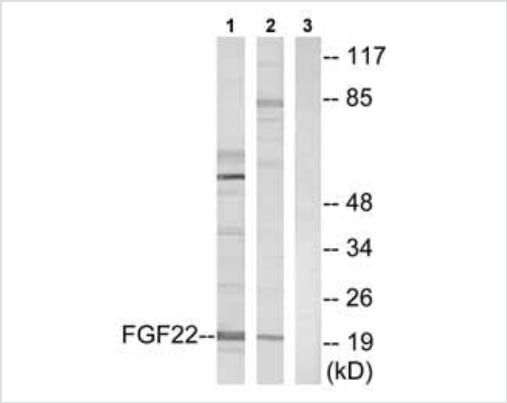
Abpromise™承诺保证使用ab74860于以下的经测试应用

“应用说明”部分 下显示的仅为推荐的起始稀释度;实际最佳的稀释度/浓度应由使用者检定。

应用	Ab评论	说明
WB		1/500 - 1/1000. Predicted molecular weight: 19 kDa.
IHC-P		1/50 - 1/100.
ICC/IF		1/500 - 1/1000.

靶标	
功能	May be involved in hair development.
序列相似性	Belongs to the heparin-binding growth factors family.
细胞定位	Secreted.

图片



Western blot - Anti-FGF22 antibody (ab74860)

All lanes : Anti-FGF22 antibody (ab74860) at 1/500 dilution

Lane 1 : Extracts from Jurkat cells

Lane 2 : Extracts from HT-29 cells

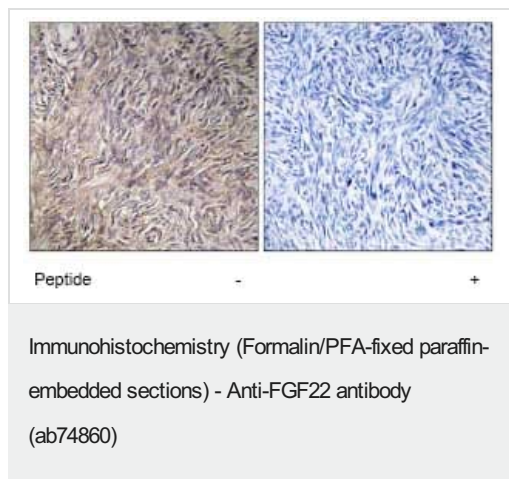
Lane 3 : Extracts from Jurkat cells with immunising peptide at 5 µg

Lysates/proteins at 5 µg per lane.

Predicted band size: 19 kDa

Observed band size: 21 kDa

Additional bands at: 55 kDa, 85 kDa. We are unsure as to the identity of these extra bands.



Immunohistochemistry analysis of FGF22 in paraffin-embedded human ovary tissue using ab74860, at 1/50 dilution, in the presence (right panel) or absence (left panel) of immunising peptide.



Immunofluorescence analysis of FGF22 in MCF-7 cells using ab74860, at 1/500 dilution, in the presence (right panel) or absence (left panel) of immunising peptide.

Please note: All products are "FOR RESEARCH USE ONLY. NOT FOR USE IN DIAGNOSTIC PROCEDURES"

Our Abpromise to you: Quality guaranteed and expert technical support

- Replacement or refund for products not performing as stated on the datasheet
- Valid for 12 months from date of delivery
- Response to your inquiry within 24 hours
- We provide support in Chinese, English, French, German, Japanese and Spanish
- Extensive multi-media technical resources to help you
- We investigate all quality concerns to ensure our products perform to the highest standards

If the product does not perform as described on this datasheet, we will offer a refund or replacement. For full details of the Abpromise, please visit <https://www.abcam.cn/abpromise> or contact our technical team.

Terms and conditions

- Guarantee only valid for products bought direct from Abcam or one of our authorized distributors