




Anti-FGE antibody ab91479

1 图像

概述

产品名称	Anti-FGE抗体
描述	山羊多克隆抗体to FGE
宿主	Goat
经测试应用	适用于: WB
种属反应性	与反应: Mouse 预测可用于: Rat, Cow, Dog 
免疫原	Synthetic peptide corresponding to Human FGE aa 314-327 (internal sequence). Sequence: C-ETLNPKGPPSGKDR Database link: NP_877437.2  Run BLAST with  Run BLAST with
阳性对照	Mouse pancreas, Mouse eye and Human kidney lysates
常规说明	<p>The Life Science industry has been in the grips of a reproducibility crisis for a number of years. Abcam is leading the way in addressing this with our range of recombinant monoclonal antibodies and knockout edited cell lines for gold-standard validation. Please check that this product meets your needs before purchasing.</p> <p>If you have any questions, special requirements or concerns, please send us an inquiry and/or contact our Support team ahead of purchase. Recommended alternatives for this product can be found below, along with publications, customer reviews and Q&As</p>
<h4>性能</h4>	
形式	Liquid
存放说明	Shipped at 4°C. Upon delivery aliquot and store at -20°C. Avoid repeated freeze / thaw cycles.
存储溶液	pH: 7.30 Preservative: 0.02% Sodium azide Constituents: Tris buffered saline, 0.5% BSA
纯度	Immunogen affinity purified
纯化说明	ab91479 is purified from goat serum by ammonium sulphate precipitation followed by antigen affinity chromatography using the immunizing peptide.

克隆

多克隆

同种型

IgG

应用

The Abpromise guarantee

Abpromise™承诺保证使用ab91479于以下的经测试应用

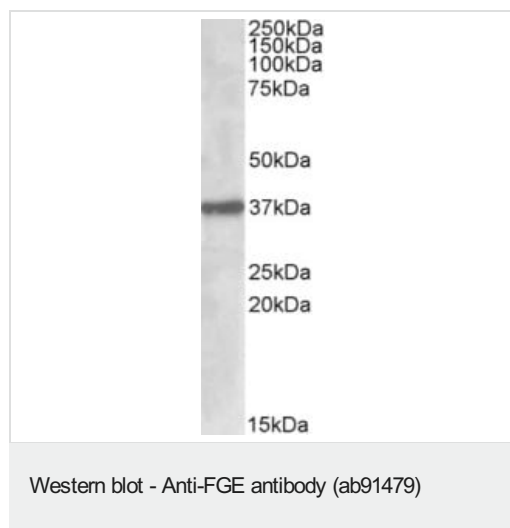
“应用说明”部分 下显示的仅为推荐的起始稀释度;实际最佳的稀释度/浓度应由使用者检定。

应用	Ab评论	说明
WB		Use a concentration of 0.5 - 2 µg/ml. Detects a band of approximately 37 kDa (predicted molecular weight: 40 kDa). 1 hour primary incubation is recommended for this product.

靶标

功能	Using molecular oxygen and an unidentified reducing agent, oxidizes a cysteine residue in the substrate sulfatase to an active site 3-oxoalanine residue, which is also called C(alpha)-formylglycine. Known substrates include GALNS, ARSA, STS and ARSE.
组织特异性	Ubiquitous. Highly expressed in kidney, pancreas and liver. Detected at lower levels in leukocytes, lung, placenta, small intestine, skeletal muscle and heart.
通路	Protein modification; sulfatase oxidation.
疾病相关	Defects in SUMF1 are the cause of multiple sulfatase deficiency (MSD) [MIM:272200]. MSD is a clinically and biochemically heterogeneous disorder caused by the simultaneous impairment of all sulfatases, due to defective post-translational modification and activation. It combines features of individual sulfatase deficiencies such as metachromatic leukodystrophy, mucopolysaccharidosis, chondrodysplasia punctata, hydrocephalus, ichthyosis, neurologic deterioration and developmental delay. Inheritance is autosomal recessive.
序列相似性	Belongs to the sulfatase-modifying factor family.
翻译后修饰	N-glycosylated. Contains high-mannose-type oligosaccharides.
细胞定位	Endoplasmic reticulum lumen.

图片



Anti-FGE antibody (ab91479) at 1 µg/ml + Mouse Pancreas lysate
(in RIPA buffer) at 35 µg

Developed using the ECL technique.

Predicted band size: 40 kDa

Observed band size: 37 kDa

Primary incubation was 1 hour.

Please note: All products are "FOR RESEARCH USE ONLY. NOT FOR USE IN DIAGNOSTIC PROCEDURES"

Our Abpromise to you: Quality guaranteed and expert technical support

- Replacement or refund for products not performing as stated on the datasheet
- Valid for 12 months from date of delivery
- Response to your inquiry within 24 hours
- We provide support in Chinese, English, French, German, Japanese and Spanish
- Extensive multi-media technical resources to help you
- We investigate all quality concerns to ensure our products perform to the highest standards

If the product does not perform as described on this datasheet, we will offer a refund or replacement. For full details of the Abpromise, please visit <https://www.abcam.cn/abpromise> or contact our technical team.

Terms and conditions

- Guarantee only valid for products bought direct from Abcam or one of our authorized distributors