

Anti-FES antibody [EPR3230(2)] ab108418

重组 RabMAb

4 图像

概述

产品名称	Anti-FES抗体[EPR3230(2)]
描述	兔单克隆抗体[EPR3230(2)] to FES
宿主	Rabbit
经测试应用	<b>适用于:</b> WB, ICC/IF, Flow Cyt (Intra) <b>不适用于:</b> IHC-P
种属反应性	<b>与反应:</b> Human
免疫原	Synthetic peptide. This information is proprietary to Abcam and/or its suppliers.
阳性对照	TF-1, U937, and Human spleen lysates; HeLa cells
常规说明	<p>This product is a recombinant monoclonal antibody, which offers several advantages including:</p> <ul style="list-style-type: none"><li>- High batch-to-batch consistency and reproducibility</li><li>- Improved sensitivity and specificity</li><li>- Long-term security of supply</li><li>- Animal-free production</li></ul> <p>For more information <a href="#">see here</a>.</p> <p>Our RabMAb<sup>®</sup> technology is a patented hybridoma-based technology for making rabbit monoclonal antibodies. For details on our patents, please refer to <a href="#">RabMAb<sup>®</sup> patents</a>.</p> <p>Mouse, Rat: We have preliminary internal testing data to indicate this antibody may not react with these species. Please contact us for more information.</p>

性能

形式	Liquid
存放说明	Shipped at 4°C. Store at -20°C. Stable for 12 months at -20°C.
存储溶液	pH: 7.20 Preservative: 0.01% Sodium azide Constituents: 9% PBS, 40% Glycerol (glycerin, glycerine), 0.05% BSA, 50% Tissue culture supernatant
纯度	Tissue culture supernatant
克隆	单克隆

克隆编号EPR3230(2)

同种型IgG

应用

The Abpromise guarantee

Abpromise™承诺保证使用ab108418于以下的经测试应用

“应用说明”部分 下显示的仅为推荐的起始稀释度;实际最佳的稀释度/浓度应由使用者检定。

应用	Ab评论	说明
WB		1/1000 - 1/10000. Detects a band of approximately 93 kDa (predicted molecular weight: 93 kDa).
ICC/IF		1/100 - 1/250.
Flow Cyt (Intra)		1/100.

应用说明

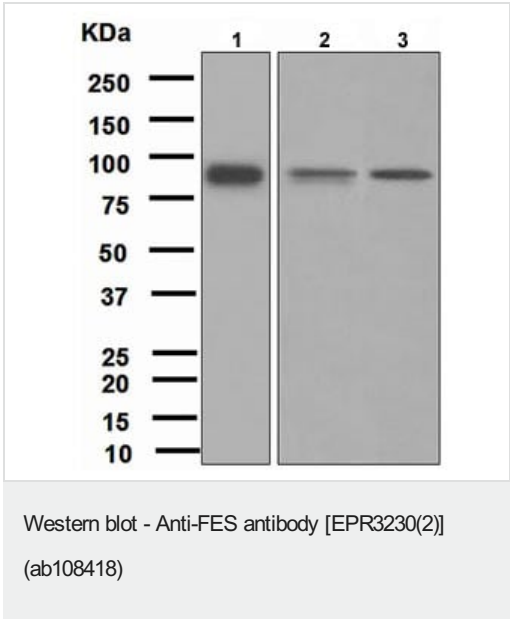
Is unsuitable for IHC-P.

靶标

序列相似性

Belongs to the protein kinase superfamily. Tyr protein kinase family. Fes/fps subfamily.  
Contains 1 FCH domain.  
Contains 1 protein kinase domain.  
Contains 1 SH2 domain.

图片

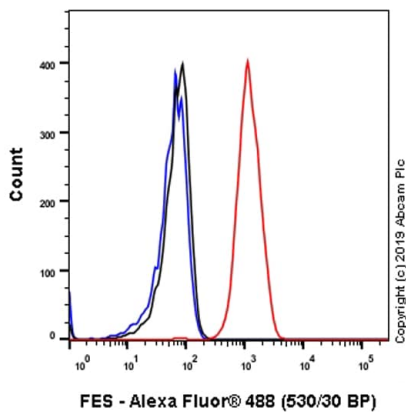


**All lanes :** Anti-FES antibody [EPR3230(2)] (ab108418) at 1/1000 dilution

**Lane 1 :** TF-1 lysate  
**Lane 2 :** U937 lysate  
**Lane 3 :** Human spleen lysate

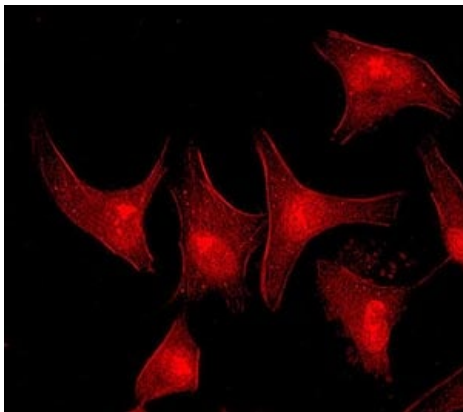
Lysates/proteins at 10 µg per lane.

**Predicted band size:** 93 kDa



Flow Cytometry (Intracellular) - Anti-FES antibody  
[EPR3230(2)] (ab108418)

Flow Cytometry analysis of HeLa (Human cervix adenocarcinoma epithelial cell) cells labeling FES with purified ab108418 at 1/100 dilution (10 µg/mL) (Red). Cells were fixed with 4% Paraformaldehyde and permeabilised with 90% Methanol. A Goat anti rabbit IgG (Alexa Fluor® 488, [ab150077](#)) secondary antibody was used at 1/2000. Isotype control - Rabbit monoclonal IgG (Black). Unlabeled control - Cells without incubation with primary antibody and secondary antibody (Blue).



Immunocytochemistry/ Immunofluorescence - Anti-FES antibody [EPR3230(2)] (ab108418)

ab108418, at a 1/100 dilution, staining FES in HeLa (Human epithelial cell line from cervix adenocarcinoma) cells by Immunofluorescence.

### Why choose a recombinant antibody?



Anti-FES antibody [EPR3230(2)] (ab108418)

**Please note:** All products are "FOR RESEARCH USE ONLY. NOT FOR USE IN DIAGNOSTIC PROCEDURES"

### **Our Abpromise to you: Quality guaranteed and expert technical support**

---

- Replacement or refund for products not performing as stated on the datasheet
- Valid for 12 months from date of delivery
- Response to your inquiry within 24 hours
  
- We provide support in Chinese, English, French, German, Japanese and Spanish
- Extensive multi-media technical resources to help you
- We investigate all quality concerns to ensure our products perform to the highest standards

If the product does not perform as described on this datasheet, we will offer a refund or replacement. For full details of the Abpromise, please visit <https://www.abcam.cn/abpromise> or contact our technical team.

### **Terms and conditions**

---

- Guarantee only valid for products bought direct from Abcam or one of our authorized distributors