

Anti-FCHO2 antibody ab122407

3 图像

概述

| | |
|-------|---|
| 产品名称 | Anti-FCHO2抗体 |
| 描述 | 兔多克隆抗体to FCHO2 |
| 宿主 | Rabbit |
| 经测试应用 | 适用于: IHC-P |
| 种属反应性 | 与反应: Human |
| 免疫原 | antigen sequence: KGTGKERPGL IEFEECDTAS AVEGIKPRKR KTFALPGLIK KEKDAESVEC PDADSLNIPD VDEEGYSI, corresponding to amino acids 258-325 of Human FCHO2 Run BLAST with ExpASY Run BLAST with NCBI |
| 阳性对照 | IHC: Human thyroid, endometrium and placenta cells. |
| 常规说明 | <p>The Life Science industry has been in the grips of a reproducibility crisis for a number of years. Abcam is leading the way in addressing this with our range of recombinant monoclonal antibodies and knockout edited cell lines for gold-standard validation. Please check that this product meets your needs before purchasing.</p> <p>If you have any questions, special requirements or concerns, please send us an inquiry and/or contact our Support team ahead of purchase. Recommended alternatives for this product can be found below, along with publications, customer reviews and Q&As</p> |

性能

| | |
|------|---|
| 形式 | Liquid |
| 存放说明 | Shipped at 4°C. Upon delivery aliquot and store at -20°C. Avoid freeze / thaw cycles. |
| 存储溶液 | pH: 7.20 Preservative: 0.02% Sodium azide Constituents: 59% PBS, 40% Glycerol (glycerin, glycerine) |
| 纯度 | Immunogen affinity purified |
| 克隆 | 多克隆 |
| 同种型 | IgG |

应用

The Abpromise guarantee

Abpromise™ 承诺保证使用 ab122407 于以下的经测试应用

“应用说明”部分下显示的仅为推荐的起始稀释度；实际最佳的稀释度/浓度应由使用者检定。

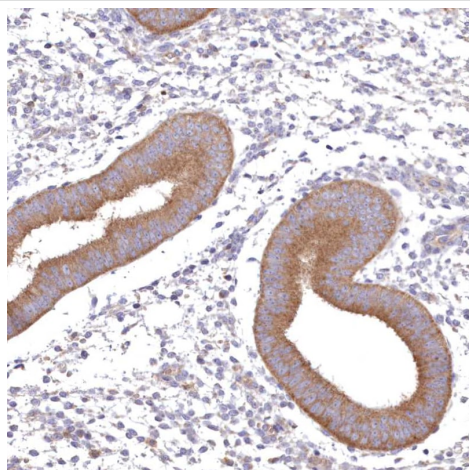
| 应用 | Ab评论 | 说明 |
|-------|------|---|
| IHC-P | | 1/20 - 1/50. Perform heat mediated antigen retrieval with citrate buffer pH 6 before commencing with IHC staining protocol. |

靶标

功能 May play a role in membrane remodeling by imposing and stabilizing particular membrane curvatures.

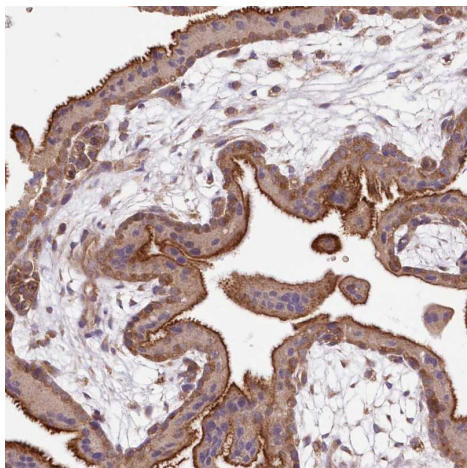
序列相似性 Contains 1 FCH domain.

图片



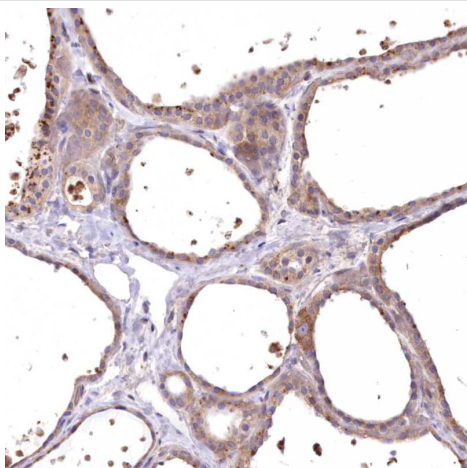
ab122407, at a 1/40 dilution, staining FCHO2 in glandular cells of paraffin-embedded Human endometrium tissue by immunohistochemistry.

Immunohistochemistry (Formalin/PFA-fixed paraffin-embedded sections) - Anti-FCHO2 antibody (ab122407)



Immunohistochemistry (Formalin/PFA-fixed paraffin-embedded sections) - Anti-FCHO2 antibody (ab122407)

ab122407, at a 1/40 dilution, staining FCHO2 in glandular cells of paraffin-embedded Human placenta tissue by immunohistochemistry.



Immunohistochemistry (Formalin/PFA-fixed paraffin-embedded sections) - Anti-FCHO2 antibody (ab122407)

ab122407, at a 1/40 dilution, staining FCHO2 in thyroid gland cells of paraffin-embedded Human small intestine tissue by immunohistochemistry.

Please note: All products are "FOR RESEARCH USE ONLY. NOT FOR USE IN DIAGNOSTIC PROCEDURES"

Our Abpromise to you: Quality guaranteed and expert technical support

- Replacement or refund for products not performing as stated on the datasheet
- Valid for 12 months from date of delivery
- Response to your inquiry within 24 hours
- We provide support in Chinese, English, French, German, Japanese and Spanish
- Extensive multi-media technical resources to help you
- We investigate all quality concerns to ensure our products perform to the highest standards

If the product does not perform as described on this datasheet, we will offer a refund or replacement. For full details of the Abpromise,

please visit <https://www.abcam.cn/abpromise> or contact our technical team.

Terms and conditions

- Guarantee only valid for products bought direct from Abcam or one of our authorized distributors