


Anti-FATP1 antibody ab81875

★★★★☆ [1 Abreviews](#) [2 References](#) [2 图像](#)

概述

| | |
|-------|--|
| 产品名称 | Anti-FATP1抗体 |
| 描述 | 兔多克隆抗体to FATP1 |
| 宿主 | Rabbit |
| 特异性 | From Jan 2024, QC testing of replenishment batches of this polyclonal changed. All tested and expected application and reactive species combinations are still covered by our Abcam product promise. However, we no longer test all applications. For more information on a specific batch, please contact our Scientific Support who will be happy to help. |
| 经测试应用 | 适用于: ICC/IF, WB |
| 种属反应性 | 与反应: Human 预测可用于: Dog  |
| 免疫原 | Synthetic peptide. This information is proprietary to Abcam and/or its suppliers. (Peptide available as ab104213) |
| 阳性对照 | This antibody gave a positive signal in Human Skeletal Muscle and Human Liver Tissue Lysates. |
| 常规说明 | The Life Science industry has been in the grips of a reproducibility crisis for a number of years. Abcam is leading the way in addressing this with our range of recombinant monoclonal antibodies and knockout edited cell lines for gold-standard validation. Please check that this product meets your needs before purchasing. If you have any questions, special requirements or concerns, please send us an inquiry and/or contact our Support team ahead of purchase. Recommended alternatives for this product can be found below, along with publications, customer reviews and Q&As |

性能

| | |
|------|--|
| 形式 | Liquid |
| 存放说明 | Shipped at 4°C. Store at +4°C short term (1-2 weeks). Upon delivery aliquot. Store at -20°C or -80°C. Avoid freeze / thaw cycle. |
| 存储溶液 | pH: 7.40 Preservative: 0.02% Sodium azide Constituent: PBS |

Batches of this product that have a concentration < 1mg/ml may have BSA added as a stabilising

agent. If you would like information about the formulation of a specific lot, please contact our scientific support team who will be happy to help.

纯度 Immunogen affinity purified
克隆 多克隆
同种型 IgG

应用

The Abpromise guarantee **Abpromise™** 承诺保证使用ab81875于以下的经测试应用

“应用说明”部分 下显示的仅为推荐的起始稀释度;实际最佳的稀释度/浓度应由使用者检定。

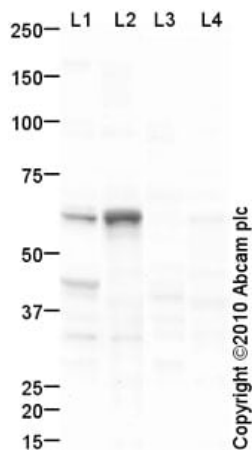
| 应用 | Ab评论 | 说明 |
|--------|-----------|--|
| ICC/IF | | Use a concentration of 1 µg/ml. |
| WB | ★★★★★ (1) | Use a concentration of 1 µg/ml. Detects a band of approximately 65 kDa (predicted molecular weight: 71 kDa). |

靶标

相关性 SLC27A1 (Solute carrier family 27 member 1) is involved in translocation of long-chain fatty acids (LFCA) across the plasma membrane. SLC27A1 may act directly as a bona fide transporter, or alternatively, in a cytoplasmic or membrane-associated multimeric protein complex to trap and draw fatty acids towards accumulation. It also plays a pivotal role in regulating available LFCA substrates from exogenous sources in tissues undergoing high levels of beta-oxidation or triglyceride synthesis and may be involved in regulation of cholesterol metabolism.

细胞定位 Cell membrane; Single-pass membrane protein. Intracytoplasmic membrane; Single-pass membrane protein. Cytoplasm. Note=Plasma membrane and intracellular membranes, at least in adipocytes. Predominantly cytoplasmic in myocytes.

图片



Western blot - Anti-FATP1 antibody (ab81875)

All lanes : Anti-FATP1 antibody (ab81875) at 1 µg/ml

Lane 1 : Human skeletal muscle tissue lysate - total protein ([ab29330](#))

Lane 2 : Human liver tissue lysate - total protein ([ab29889](#))

Lane 3 : Human skeletal muscle tissue lysate - total protein ([ab29330](#)) with Immunising Peptide at 1 µg/ml

Lane 4 : Human liver tissue lysate - total protein ([ab29889](#)) with Immunising Peptide at 1 µg/ml

Lysates/proteins at 10 µg per lane.

Secondary

All lanes : Goat Anti-Rabbit IgG H&L (HRP) preadsorbed ([ab97080](#)) at 1/5000 dilution

Developed using the ECL technique.

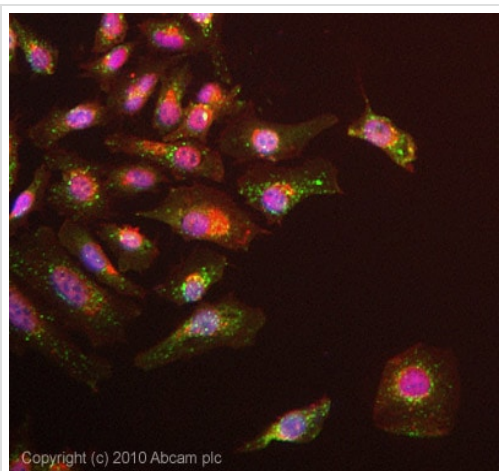
Performed under reducing conditions.

Predicted band size: 71 kDa

Observed band size: 65 kDa

Additional bands at: 35 kDa, 45 kDa. We are unsure as to the identity of these extra bands.

Exposure time: 1 minute



Immunocytochemistry/ Immunofluorescence - Anti-FATP1 antibody (ab81875)

ICC/IF image of ab81875 stained HeLa cells. The cells were 4% formaldehyde fixed (10 min) and then incubated in 1%BSA / 10% normal goat serum / 0.3M glycine in 0.1% PBS-Tween for 1h to permeabilise the cells and block non-specific protein-protein interactions. The cells were then incubated with the antibody ab81875 at 1µg/ml overnight at +4°C. The secondary antibody (green) was Alexa Fluor® 488 goat anti- rabbit IgG (H+L) used at a 1/1000 dilution for 1h. Alexa Fluor® 594 WGA was used to label plasma membranes (red) at a 1/200 dilution for 1h. DAPI was used to stain the cell nuclei (blue) at a concentration of 1.43µM. This antibody also gave a positive result in This antibody also gave a positive result in Hek293, HepG2, and MCF-7 formaldehyde (4%, 10min) fixed cells at 1ug/ml, and also in HeLa, Hek293, HepG2, and MCF-7 Methanol (100%, 5min) fixed cells at 1ug/ml.

Our Abpromise to you: Quality guaranteed and expert technical support

- Replacement or refund for products not performing as stated on the datasheet
- Valid for 12 months from date of delivery
- Response to your inquiry within 24 hours

- We provide support in Chinese, English, French, German, Japanese and Spanish
- Extensive multi-media technical resources to help you
- We investigate all quality concerns to ensure our products perform to the highest standards

If the product does not perform as described on this datasheet, we will offer a refund or replacement. For full details of the Abpromise, please visit <https://www.abcam.cn/abpromise> or contact our technical team.

Terms and conditions

- Guarantee only valid for products bought direct from Abcam or one of our authorized distributors