

### Anti-FAT/FAT1 antibody ab198892

★★★★★ [1 Abreviews](#) [1 References](#) [1 图像](#)

#### 概述

产品名称	Anti-FAT/FAT1抗体
描述	兔多克隆抗体to FAT/FAT1
宿主	Rabbit
经测试应用	适用于: IHC-P
种属反应性	与反应: Human
免疫原	Synthetic peptide corresponding to Human FAT/FAT1 (internal sequence). Gene Accession: NP_005236. Database link: <a href="#">Q14517</a>
阳性对照	Human thyroid cancer tissue.
常规说明	<p>The Life Science industry has been in the grips of a reproducibility crisis for a number of years. Abcam is leading the way in addressing this with our range of recombinant monoclonal antibodies and knockout edited cell lines for gold-standard validation. Please check that this product meets your needs before purchasing.</p> <p>If you have any questions, special requirements or concerns, please send us an inquiry and/or contact our Support team ahead of purchase. Recommended alternatives for this product can be found below, along with publications, customer reviews and Q&amp;As</p>

#### 性能

形式	Liquid
存放说明	Shipped at 4°C. Store at +4°C short term (1-2 weeks). Upon delivery aliquot. Store at -20°C long term. Avoid freeze / thaw cycle.
存储溶液	pH: 7.4 Preservative: 0.05% Sodium azide Constituents: 49% PBS, 50% Glycerol (glycerin, glycerine)
纯度	Immunogen affinity purified
克隆	多克隆
同种型	IgG

#### 应用

The Abpromise guarantee

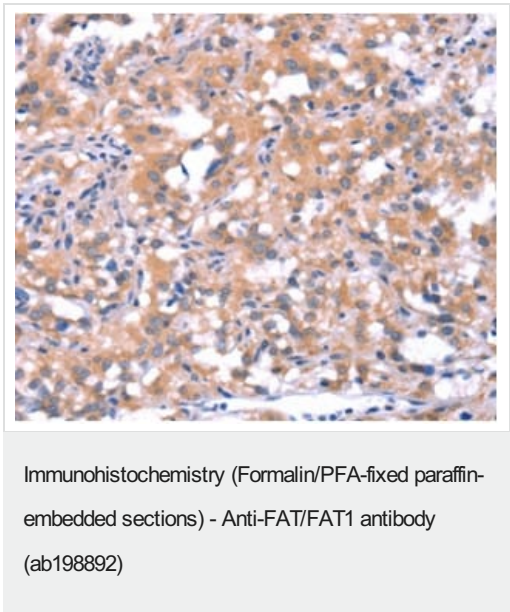
Abpromise™承诺保证使用ab198892于以下的经测试应用

“应用说明”部分 下显示的仅为推荐的起始稀释度;实际最佳的稀释度/浓度应由使用者检定。

应用	Ab评论	说明
IHC-P		1/50 - 1/200.

靶标	
功能	Plays an essential role for cellular polarization, directed cell migration and modulating cell-cell contact.
组织特异性	Expressed in many epithelial and some endothelial and smooth muscle cells.
序列相似性	Contains 33 cadherin domains. Contains 5 EGF-like domains. Contains 1 laminin G-like domain.
结构域	A PTB-like motif (DNXYH sequence) is required for the targeting to the leading edge. This motif represents a minimal protein-protein interaction core motif that is not regulated by tyrosine phosphorylation.
翻译后修饰	Undergoes proteolytic cleavage. The extracellular domain is cleaved off and the cytoplasmic domain (about 400 AA) shuttles to the nucleus.
细胞定位	Cell membrane. Nucleus. Cytoplasm > perinuclear region.

图片



Immunohistochemical analysis of paraffin-embedded Human thyroid cancer tissue labeling FAT/FAT1 with ab198892 at 1/40 dilution.

Please note: All products are "FOR RESEARCH USE ONLY. NOT FOR USE IN DIAGNOSTIC PROCEDURES"

Our Abpromise to you: Quality guaranteed and expert technical support

- Replacement or refund for products not performing as stated on the datasheet
- Valid for 12 months from date of delivery
- Response to your inquiry within 24 hours
- We provide support in Chinese, English, French, German, Japanese and Spanish
- Extensive multi-media technical resources to help you
- We investigate all quality concerns to ensure our products perform to the highest standards

If the product does not perform as described on this datasheet, we will offer a refund or replacement. For full details of the Abpromise, please visit <https://www.abcam.cn/abpromise> or contact our technical team.

#### **Terms and conditions**

---

- Guarantee only valid for products bought direct from Abcam or one of our authorized distributors