


# Anti-Fast Myosin Skeletal Heavy chain antibody [MY-32] ab51263

★★★★★ [6 Abreviews](#) [66 References](#) [2 图像](#)

### 概述

产品名称	Anti-Fast Myosin Skeletal Heavy chain抗体[MY-32]
描述	小鼠单克隆抗体[MY-32] to Fast Myosin Skeletal Heavy chain
宿主	Mouse
经测试应用	适用于: ICC, IHC-P
种属反应性	与反应: Rabbit 预测可用于: Mouse, Rat, Chicken, Guinea pig, Cow 
免疫原	Full length native protein (purified) corresponding to Rabbit Fast Myosin Skeletal Heavy chain. Purified rabbit muscle myosin.
阳性对照	ICC: ioSkeletal Myocytes - Human iPSC-Derived Skeletal Myocytes ( <a href="#">ab277612</a> ). IHC: Rabbit tongue section
常规说明	<p><i>This product was changed from ascites to tissue culture supernatant on 18th October 2016. The following lot is from ascites and is still in stock as of 18th October 2016 (GR255796). Lot numbers higher than GR255796 will be from tissue culture supernatant. Please note that the dilutions may need to be adjusted accordingly.</i></p> <p>May be used for detecting cross striated muscle differentiation in tumors.</p> <p>The Life Science industry has been in the grips of a reproducibility crisis for a number of years. Abcam is leading the way in addressing this with our range of recombinant monoclonal antibodies and knockout edited cell lines for gold-standard validation. Please check that this product meets your needs before purchasing.</p> <p>If you have any questions, special requirements or concerns, please send us an inquiry and/or contact our Support team ahead of purchase. Recommended alternatives for this product can be found below, along with publications, customer reviews and Q&amp;As</p>

### 性能

形式	Liquid
存放说明	Shipped at 4°C. Store at +4°C short term (1-2 weeks). Upon delivery aliquot. Store at -20°C or -80°C. Avoid freeze / thaw cycle.
存储溶液	pH: 7.40 Preservative: 0.097% Sodium azide Constituent: PBS

纯度	Proprietary Purification
纯化说明	Purified from Tissue culture supernatant.
克隆	单克隆
克隆编号	MY-32
同种型	IgG1

应用

The Abpromise guarantee      **Abpromise™**承诺保证使用ab51263于以下的经测试应用

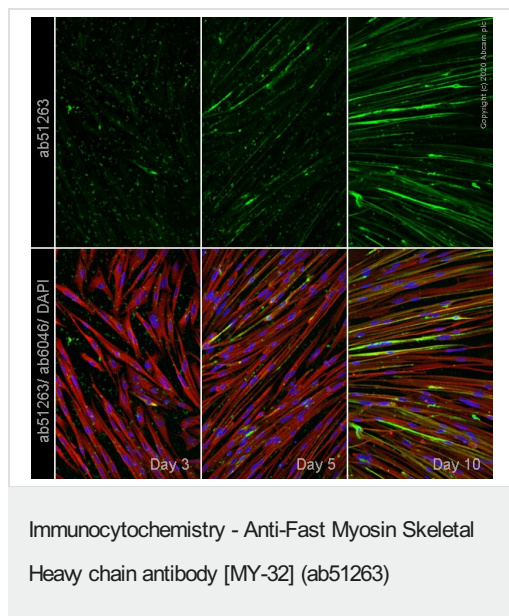
“应用说明”部分 下显示的仅为推荐的起始稀释度;实际最佳的稀释度/浓度应由使用者检定。

应用	Ab评论	说明
ICC		Use a concentration of 1 - 5 µg/ml.
IHC-P	★★★★★ (4)	Use at an assay dependent concentration.

靶标

功能	Muscle contraction.
序列相似性	Contains 1 IQ domain. Contains 1 myosin head-like domain.
结构域	The rodlike tail sequence is highly repetitive, showing cycles of a 28-residue repeat pattern composed of 4 heptapeptides, characteristic for alpha-helical coiled coils. Each myosin heavy chain can be split into 1 light meromyosin (LMM) and 1 heavy meromyosin (HMM). It can later be split further into 2 globular subfragments (S1) and 1 rod-shaped subfragment (S2).
细胞定位	Cytoplasm > myofibril. Thick filaments of the myofibrils.

图片

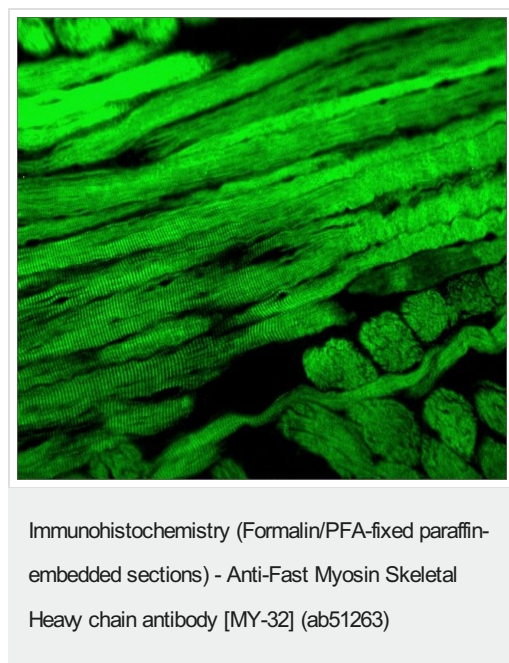


Immunofluorescence staining of Fast Myosin Skeletal Heavy chain using ab51263 in ioSkeletal Myocytes - Human iPSC-Derived Skeletal Myocytes ([ab277612](#)), which were differentiated for 3 (left panel), 5 (middle panel) and 10 days (right panel) post induction.

The cells were fixed with 100% MeOH (5 min) and then blocked with 1% BSA/10% normal goat serum/0.3M glycine in 0.1% PBS-Tween for 1h. The cells were then incubated overnight at +4°C with ab51263 at 5 µg/mL and [ab6046](#), rabbit polyclonal to beta Tubulin, at 1/1000 dilution. Cells were then incubated with [ab150117](#), Goat Anti-Mouse IgG H&L (Alexa Fluor® 488) preadsorbed at 1/1000 dilution (shown in green) and [ab150088](#), Goat Anti-Rabbit IgG H&L (Alexa Fluor® 594) preadsorbed at 1/1000 dilution (shown in red). Nuclear DNA was labelled with DAPI (shown in blue).

Image was acquired with a high-content analyser (Operetta CLS, Perkin Elmer) and a maximum intensity projection of confocal sections is shown. Gamma is adjusted to 1.5 in all channels.

The antibody ab51263 gave comparable results using 4% formaldehyde fixation (10 min).



Immunohistochemistry analysis of Formalin-fixed, paraffin-embedded Rabbit tongue sections labeling Fast Myosin Skeletal Heavy chain with ab51263 at 20 µg/mL followed by Goat Anti-Mouse IgG (Fab specific)-FITC antibody.

**Please note:** All products are "FOR RESEARCH USE ONLY. NOT FOR USE IN DIAGNOSTIC PROCEDURES"

**Our Abpromise to you: Quality guaranteed and expert technical support**

- Replacement or refund for products not performing as stated on the datasheet

- Valid for 12 months from date of delivery
- Response to your inquiry within 24 hours
- We provide support in Chinese, English, French, German, Japanese and Spanish
- Extensive multi-media technical resources to help you
- We investigate all quality concerns to ensure our products perform to the highest standards

If the product does not perform as described on this datasheet, we will offer a refund or replacement. For full details of the Abpromise, please visit <https://www.abcam.cn/abpromise> or contact our technical team.

#### **Terms and conditions**

---

- Guarantee only valid for products bought direct from Abcam or one of our authorized distributors