


Anti-FANCI antibody ab15344

★★★★★ [6 Abreviews](#) [8 References](#) [1 图像](#)

概述

产品名称	Anti-FANCI抗体
描述	兔多克隆抗体to FANCI
宿主	Rabbit
经测试应用	适用于: WB
种属反应性	与反应: Human 预测可用于: Chimpanzee, Rhesus monkey, Gorilla, Orangutan 
免疫原	Synthetic peptide within Human FANCI aa 200-250. The exact sequence is proprietary. Database link: Q9NVI1
常规说明	<p>The Life Science industry has been in the grips of a reproducibility crisis for a number of years. Abcam is leading the way in addressing this with our range of recombinant monoclonal antibodies and knockout edited cell lines for gold-standard validation. Please check that this product meets your needs before purchasing.</p> <p>If you have any questions, special requirements or concerns, please send us an inquiry and/or contact our Support team ahead of purchase. Recommended alternatives for this product can be found below, along with publications, customer reviews and Q&As</p>

性能

形式	Liquid
存放说明	Shipped at 4°C. Store at +4°C short term (1-2 weeks). Upon delivery aliquot. Store at -20°C. Avoid freeze / thaw cycle.
存储溶液	pH: 7 Preservative: 0.09% Sodium azide Constituent: Tris citrate/phosphate
纯度	pH 7 to 8 Immunogen affinity purified
克隆	多克隆
同种型	IgG

应用

The Abpromise guarantee **Abpromise™**承诺保证使用ab15344于以下的经测试应用

“应用说明”部分 下显示的仅为推荐的起始稀释度;实际最佳的稀释度/浓度应由使用者检定。

应用	Ab评论	说明
WB	★★★★☆ (2)	1/2500 - 1/10000. Detects a band of approximately 145 kDa (predicted molecular weight: 149, 142, 27 kDa).

靶标

功能 Required for maintenance of chromosomal stability. Involved in the repair of DNA double-strand breaks by homologous recombination and in the repair of DNA cross-links. Participates in S phase and G2 phase checkpoint activation upon DNA damage. Promotes FANCD2 ubiquitination and recruitment to DNA repair sites.

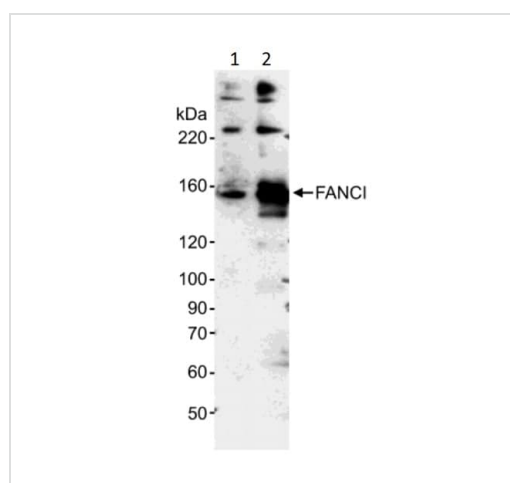
疾病相关 Defects in FANCI are a cause of Fanconi anemia complementation group I (FANCI) [MIM:609053]. It is a disorder affecting all bone marrow elements and resulting in anemia, leukopenia and thrombopenia. It is associated with cardiac, renal and limb malformations, dermal pigmentary changes, and a predisposition to the development of malignancies. At the cellular level it is associated with hypersensitivity to DNA-damaging agents, chromosomal instability (increased chromosome breakage) and defective DNA repair.

结构域 The C-terminal 30 residues are probably required for function in DNA repair.

翻译后修饰 Monoubiquitinated on Lys-523 during S phase and upon genotoxic stress. Deubiquitinated by USP1 as cells enter G2/M, or once DNA repair is completed. Monoubiquitination requires the FANCA-FANCB-FANCC-FANCE-FANCF-FANCG-FANCM complex. Ubiquitination is required for binding to chromatin, DNA repair, and normal cell cycle progression. Phosphorylated in response to DNA damage by ATM and/or ATR.

细胞定位 Nucleus. Concentrates in nuclear foci upon genotoxic stress.

图片



Western blot - Anti-FANCI antibody (ab15344)

All lanes : Anti-FANCI antibody (ab15344) at 1/5000 dilution

Lane 1 : HeLa nuclear extract at 5 µg

Lane 2 : HeLa nuclear extract at 20 µg

Developed using the ECL technique.

Predicted band size: 149, 142, 27 kDa

Exposure time: 15 minutes

Please note: All products are "FOR RESEARCH USE ONLY. NOT FOR USE IN DIAGNOSTIC PROCEDURES"

Our Abpromise to you: Quality guaranteed and expert technical support

- Replacement or refund for products not performing as stated on the datasheet
- Valid for 12 months from date of delivery
- Response to your inquiry within 24 hours

- We provide support in Chinese, English, French, German, Japanese and Spanish
- Extensive multi-media technical resources to help you
- We investigate all quality concerns to ensure our products perform to the highest standards

If the product does not perform as described on this datasheet, we will offer a refund or replacement. For full details of the Abpromise, please visit <https://www.abcam.cn/abpromise> or contact our technical team.

Terms and conditions

- Guarantee only valid for products bought direct from Abcam or one of our authorized distributors