



# Anti-FAM83H antibody ab121828

## 2 图像

### 概述

产品名称	Anti-FAM83H抗体
描述	兔多克隆抗体to FAM83H
宿主	Rabbit
经测试应用	适用于: IHC-P
种属反应性	与反应: Human
免疫原	antigen sequence: VVSQAWREEV AAPGAVGGER RSLESCLLDL RDSFAQQLHQ EAERQPGAAS LTAAQLLDLTL GRSGSDRLPS RFLSAQSHST SPQGLDSPLP LEGS, corresponding to amino acids 764-857 of Human FAM83H (UniProt ID: Q6ZRV2).  <a href="#">Run BLAST with Expasy</a>  <a href="#">Run BLAST with NCBI</a>
阳性对照	Human vagina tissue
常规说明	<p>The Life Science industry has been in the grips of a reproducibility crisis for a number of years. Abcam is leading the way in addressing this with our range of recombinant monoclonal antibodies and knockout edited cell lines for gold-standard validation. Please check that this product meets your needs before purchasing.</p> <p>If you have any questions, special requirements or concerns, please send us an inquiry and/or contact our Support team ahead of purchase. Recommended alternatives for this product can be found below, along with publications, customer reviews and Q&amp;As</p>

### 性能

形式	Liquid
存放说明	Shipped at 4°C. Upon delivery aliquot and store at -20°C. Avoid repeated freeze / thaw cycles.
存储溶液	pH: 7.20 Preservative: 0.02% Sodium azide Constituents: 59% PBS, 40% Glycerol (glycerin, glycerine)
纯度	Immunogen affinity purified
克隆	多克隆
同种型	IgG

### 应用

## The Abpromise guarantee

**Abpromise™** 承诺保证使用ab121828于以下的经测试应用

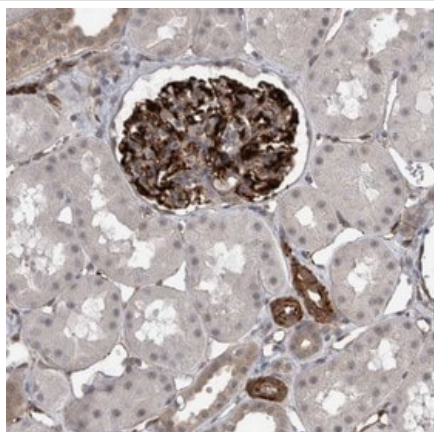
“应用说明”部分 下显示的仅为推荐的起始稀释度;实际最佳的稀释度/浓度应由使用者检定。

应用	Ab评论	说明
IHC-P		1/200 - 1/500. Perform heat mediated antigen retrieval with citrate buffer pH 6 before commencing with IHC staining protocol.

## 靶标

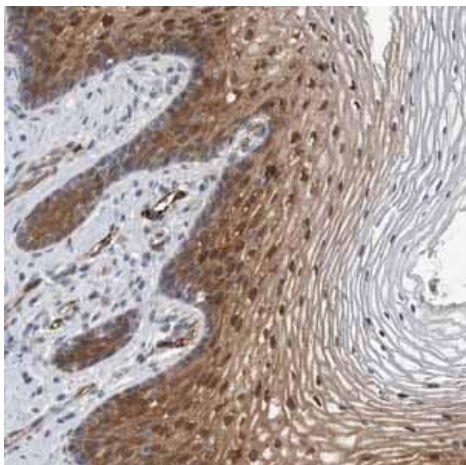
功能	May play a major role in the structural organization and calcification of developing enamel.
组织特异性	Expressed in the tooth follicle.
疾病相关	Defects in FAM83H are the cause of amelogenesis imperfecta type 3 (AI3) [MIM:130900]. AI3 is an autosomal dominant hypomineralized form of amelogenesis imperfecta, a defect of enamel formation. AI3 is characterized by enamel of normal thickness, but soft and with cheesy consistency. Enamel is lost from tooth soon after eruption.
序列相似性	Belongs to the FAM83 family.

## 图片



ab121828, at a 1/200 dilution, staining FAM83H in paraffin embedded Human vagina tissue by Immunohistochemistry.

Immunohistochemistry (Formalin/PFA-fixed paraffin-embedded sections) - Anti-FAM83H antibody (ab121828)



Immunohistochemical staining of Human vagina shows strong cytoplasmic and nuclear positivity in squamous epithelial cells using ab121828

Immunohistochemistry (Formalin/PFA-fixed paraffin-embedded sections) - Anti-FAM83H antibody (ab121828)

**Please note:** All products are "FOR RESEARCH USE ONLY. NOT FOR USE IN DIAGNOSTIC PROCEDURES"

### Our Abpromise to you: Quality guaranteed and expert technical support

---

- Replacement or refund for products not performing as stated on the datasheet
- Valid for 12 months from date of delivery
- Response to your inquiry within 24 hours
- We provide support in Chinese, English, French, German, Japanese and Spanish
- Extensive multi-media technical resources to help you
- We investigate all quality concerns to ensure our products perform to the highest standards

If the product does not perform as described on this datasheet, we will offer a refund or replacement. For full details of the Abpromise, please visit <https://www.abcam.cn/abpromise> or contact our technical team.

### Terms and conditions

---

- Guarantee only valid for products bought direct from Abcam or one of our authorized distributors