

# Anti-FAK (phospho Y397) antibody [M121] ab24781

★★★★★ [1 Abreviews](#) [5 References](#) [1 图像](#)

### 概述

产品名称	Anti-FAK (phospho Y397)抗体[M121]
描述	小鼠单克隆抗体[M121] to FAK (phospho Y397)
宿主	Mouse
经测试应用	适用于: WB
种属反应性	与反应: Human
免疫原	Synthetic peptide corresponding to Human FAK (phospho Y397) conjugated to keyhole limpet haemocyanin.
阳性对照	Untreated HUVEC cells.
常规说明	<p>The Life Science industry has been in the grips of a reproducibility crisis for a number of years. Abcam is leading the way in addressing this with our range of recombinant monoclonal antibodies and knockout edited cell lines for gold-standard validation. Please check that this product meets your needs before purchasing.</p> <p>If you have any questions, special requirements or concerns, please send us an inquiry and/or contact our Support team ahead of purchase. Recommended alternatives for this product can be found below, along with publications, customer reviews and Q&amp;As</p>

### 性能

形式	Liquid
存放说明	Shipped at 4°C. Upon delivery aliquot and store at -20°C. Avoid freeze / thaw cycles.
存储溶液	Preservative: 0.05% Sodium azide Constituents: PBS, 50% Glycerol, 0.1% BSA
纯度	Protein A purified
克隆	单克隆
克隆编号	M121
同种型	IgG1

### 应用

The Abpromise guarantee

**Abpromise™** 承诺保证使用ab24781于以下的经测试应用

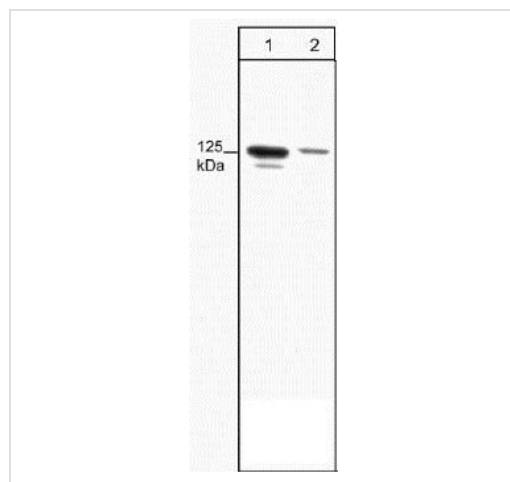
“应用说明”部分 下显示的仅为推荐的起始稀释度;实际最佳的稀释度/浓度应由使用者检定。

应用	Ab评论	说明
WB		1/500. Detects a band of approximately 125 kDa.

## 靶标

<b>功能</b>	Non-receptor protein-tyrosine kinase implicated in signaling pathways involved in cell motility, proliferation and apoptosis. Activated by tyrosine-phosphorylation in response to either integrin clustering induced by cell adhesion or antibody cross-linking, or via G-protein coupled receptor (GPCR) occupancy by ligands such as bombesin or lysophosphatidic acid, or via LDL receptor occupancy. Microtubule-induced dephosphorylation at Tyr-397 is crucial for the induction of focal adhesion disassembly. Plays a potential role in oncogenic transformations resulting in increased kinase activity.
<b>组织特异性</b>	Expressed in all organs tested, in lymphoid cell lines, but most abundantly in brain.
<b>序列相似性</b>	Belongs to the protein kinase superfamily. Tyr protein kinase family. FAK subfamily. Contains 1 FERM domain. Contains 1 protein kinase domain.
<b>结构域</b>	The first Pro-rich domain interacts with the SH3 domain of CRK-associated substrate (BCAR1) and CASL. The carboxy-terminal region is the site of focal adhesion targeting (FAT) sequence which mediates the localization of FAK1 to focal adhesions.
<b>翻译后修饰</b>	Phosphorylated on 6 tyrosine residues upon activation. Microtubule-induced dephosphorylation at Tyr-397 could be catalyzed by PTPN11 and regulated by ZFYVE21. Dephosphorylated by PTPN11 upon EPHA2 activation by its ligand EFNA1.
<b>细胞定位</b>	Cell junction > focal adhesion. Cell membrane. Constituent of focal adhesions.

## 图片



**All lanes :** Anti-FAK (phospho Y397) antibody [M121] (ab24781)

**Lane 1 :** HUVEC untreated cells.

**Lane 2 :** HUVEC cells treated with alkaline phosphatase

**Observed band size:** 125 kDa

Western blot - Anti-FAK (phospho Y397) antibody  
[M121] (ab24781)

**Please note:** All products are "FOR RESEARCH USE ONLY. NOT FOR USE IN DIAGNOSTIC PROCEDURES"

### **Our Abpromise to you: Quality guaranteed and expert technical support**

---

- Replacement or refund for products not performing as stated on the datasheet
- Valid for 12 months from date of delivery
- Response to your inquiry within 24 hours
  
- We provide support in Chinese, English, French, German, Japanese and Spanish
- Extensive multi-media technical resources to help you
- We investigate all quality concerns to ensure our products perform to the highest standards

If the product does not perform as described on this datasheet, we will offer a refund or replacement. For full details of the Abpromise, please visit <https://www.abcam.cn/abpromise> or contact our technical team.

### **Terms and conditions**

---

- Guarantee only valid for products bought direct from Abcam or one of our authorized distributors