

Anti-Factor B antibody [KT21] ab110651

1 图像

概述

产品名称	Anti-Factor B抗体[KT21]
描述	小鼠单克隆抗体[KT21] to Factor B
宿主	Mouse
经测试应用	适用于: Sandwich ELISA
种属反应性	与反应: Human
免疫原	Purified Factor B from Human blood
常规说明	<p>The Life Science industry has been in the grips of a reproducibility crisis for a number of years. Abcam is leading the way in addressing this with our range of recombinant monoclonal antibodies and knockout edited cell lines for gold-standard validation. Please check that this product meets your needs before purchasing.</p> <p>If you have any questions, special requirements or concerns, please send us an inquiry and/or contact our Support team ahead of purchase. Recommended alternatives for this product can be found below, along with publications, customer reviews and Q&As</p>

性能

形式	Liquid
存放说明	Shipped at 4°C. Store at +4°C short term (1-2 weeks). Upon delivery aliquot. Store at -20°C or -80°C. Avoid freeze / thaw cycle.
存储溶液	Preservative: 0.1% Sodium azide Constituent: PBS
纯度	Protein A purified
克隆	单克隆
克隆编号	KT21
同种型	IgG2b

应用

The Abpromise guarantee **Abpromise™**承诺保证使用ab110651于以下的经测试应用

“应用说明”部分下显示的仅为推荐的起始稀释度;实际最佳的稀释度/浓度应由使用者检定。

应用	Ab评论	说明
Sandwich ELISA		Use a concentration of 5 µg/ml. Can be paired for Sandwich ELISA with HRP Mouse monoclonal [KT24] to Factor B (ab106687) as the detection antibody.

靶标

功能

Factor B which is part of the alternate pathway of the complement system is cleaved by factor D into 2 fragments: Ba and Bb. Bb, a serine protease, then combines with complement factor 3b to generate the C3 or C5 convertase. It has also been implicated in proliferation and differentiation of preactivated B-lymphocytes, rapid spreading of peripheral blood monocytes, stimulation of lymphocyte blastogenesis and lysis of erythrocytes. Ba inhibits the proliferation of preactivated B-lymphocytes.

疾病相关

Defects in CFB are a cause of susceptibility to hemolytic uremic syndrome atypical type 4 (AHUS4) [MIM:612924]. An atypical form of hemolytic uremic syndrome. It is a complex genetic disease characterized by microangiopathic hemolytic anemia, thrombocytopenia, renal failure and absence of episodes of enterocolitis and diarrhea. In contrast to typical hemolytic uremic syndrome, atypical forms have a poorer prognosis, with higher death rates and frequent progression to end-stage renal disease. Note=Susceptibility to the development of atypical hemolytic uremic syndrome can be conferred by mutations in various components of or regulatory factors in the complement cascade system. Other genes may play a role in modifying the phenotype.

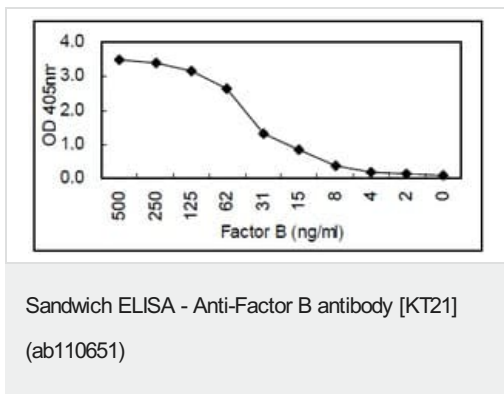
序列相似性

Belongs to the peptidase S1 family.
Contains 1 peptidase S1 domain.
Contains 3 Sushi (CCP/SCR) domains.
Contains 1 VWFA domain.

细胞定位

Secreted.

图片



Sandwich ELISA using ab110651 coated plate and HRP conjugated **ab106687** for detection.

Please note: All products are "FOR RESEARCH USE ONLY. NOT FOR USE IN DIAGNOSTIC PROCEDURES"

Our Abpromise to you: Quality guaranteed and expert technical support

- Replacement or refund for products not performing as stated on the datasheet
- Valid for 12 months from date of delivery
- Response to your inquiry within 24 hours

- We provide support in Chinese, English, French, German, Japanese and Spanish
- Extensive multi-media technical resources to help you
- We investigate all quality concerns to ensure our products perform to the highest standards

If the product does not perform as described on this datasheet, we will offer a refund or replacement. For full details of the Abpromise, please visit <https://www.abcam.cn/abpromise> or contact our technical team.

Terms and conditions

- Guarantee only valid for products bought direct from Abcam or one of our authorized distributors