

Anti-EXOC1 antibody ab118798

★★★★★ [1 Abreviews](#) [3 References](#) [2 图像](#)

概述

产品名称	Anti-EXOC1抗体
描述	兔多克隆抗体to EXOC1
宿主	Rabbit
经测试应用	适用于: WB, IP
种属反应性	与反应: Mouse, Human
免疫原	Synthetic peptide corresponding to a region within amino acids 100-150 of Human EXOC1 (NP_060731.2).
阳性对照	HeLa, 293T, Jurkat and NIH3T3 whole cell lysates
常规说明	<p>The Life Science industry has been in the grips of a reproducibility crisis for a number of years. Abcam is leading the way in addressing this with our range of recombinant monoclonal antibodies and knockout edited cell lines for gold-standard validation. Please check that this product meets your needs before purchasing.</p> <p>If you have any questions, special requirements or concerns, please send us an inquiry and/or contact our Support team ahead of purchase. Recommended alternatives for this product can be found below, along with publications, customer reviews and Q&As</p>

性能

形式	Liquid
存放说明	Shipped at 4°C. Upon delivery aliquot and store at -20°C. Avoid freeze / thaw cycles.
存储溶液	<p>pH: 7</p> <p>Preservative: 0.09% Sodium azide</p> <p>Constituent: 99% Tris citrate/phosphate</p>
纯度	pH 7 to 8
克隆	Immunogen affinity purified
同种型	多克隆
	IgG

应用

The Abpromise guarantee

Abpromise™承诺保证使用ab118798于以下的经测试应用

“应用说明”部分 下显示的仅为推荐的起始稀释度;实际最佳的稀释度/浓度应由使用者检定。

应用	Ab评论	说明
WB	★★★★★ (1)	1/2000 - 1/10000. Predicted molecular weight: 102 kDa.
IP		Use at 2-10 µg/mg of lysate.

靶标

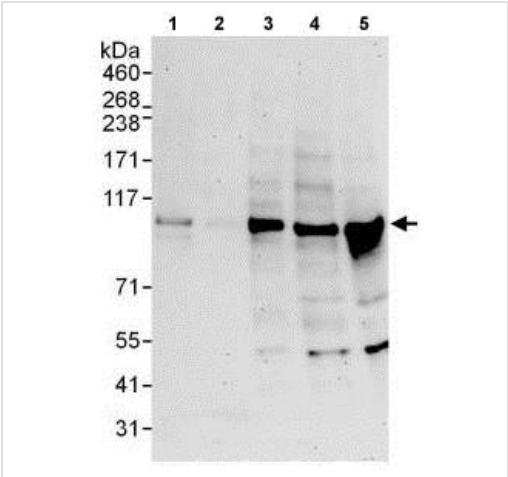
功能

Component of the exocyst complex involved in the docking of exocytic vesicles with fusion sites on the plasma membrane.

序列相似性

Belongs to the SEC3 family.

图片



Western blot - Anti-EXOC1 antibody (ab118798)

All lanes : Anti-EXOC1 antibody (ab118798) at 0.1 µg/ml

Lane 1 : HeLa whole cell lysate at 50 µg

Lane 2 : HeLa whole cell lysate at 15 µg

Lane 3 : 293T whole cell lysate at 50 µg

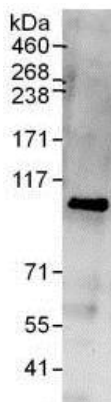
Lane 4 : Jurkat whole cell lysate at 50 µg

Lane 5 : NIH3T3 whole cell lysate at 50 µg

Developed using the ECL technique.

Predicted band size: 102 kDa

Exposure time: 3 minutes



Immunoprecipitation - Anti-EXOC1 antibody
(ab118798)

Detection of EXOC1 in Immunoprecipitates of HeLa whole cell lysates (1 mg for IP, 20% of IP loaded) using ab118798 at 6 µg/mg lysate for IP and at 1 µg/ml for subsequent Western blot detection. Detection: Chemiluminescence with an exposure time of 30 seconds.

Please note: All products are "FOR RESEARCH USE ONLY. NOT FOR USE IN DIAGNOSTIC PROCEDURES"

Our Abpromise to you: Quality guaranteed and expert technical support

- Replacement or refund for products not performing as stated on the datasheet
- Valid for 12 months from date of delivery
- Response to your inquiry within 24 hours
- We provide support in Chinese, English, French, German, Japanese and Spanish
- Extensive multi-media technical resources to help you
- We investigate all quality concerns to ensure our products perform to the highest standards

If the product does not perform as described on this datasheet, we will offer a refund or replacement. For full details of the Abpromise, please visit <https://www.abcam.cn/abpromise> or contact our technical team.

Terms and conditions

- Guarantee only valid for products bought direct from Abcam or one of our authorized distributors