

Anti-ETV6 / Tel antibody ab64909

[1 References](#) [2 图像](#)

概述

产品名称	Anti-ETV6 / Tel抗体
描述	兔多克隆抗体to ETV6 / Tel
宿主	Rabbit
经测试应用	适用于: ICC/IF, WB
种属反应性	与反应: Human 预测可用于: Mouse, Rat 
免疫原	Synthetic peptide derived from internal sequence of human ETV6/ Tel.
阳性对照	HeLa cells. Extracts from HeLa cells, HepG2 cells and Jurkat cells.
常规说明	<p>The Life Science industry has been in the grips of a reproducibility crisis for a number of years. Abcam is leading the way in addressing this with our range of recombinant monoclonal antibodies and knockout edited cell lines for gold-standard validation. Please check that this product meets your needs before purchasing.</p> <p>If you have any questions, special requirements or concerns, please send us an inquiry and/or contact our Support team ahead of purchase. Recommended alternatives for this product can be found below, along with publications, customer reviews and Q&As</p>

性能

形式	Liquid
存放说明	Shipped at 4°C. Store at -20°C. Stable for 12 months at -20°C.
存储溶液	<p>pH: 7.40</p> <p>Preservative: 0.02% Sodium azide</p> <p>Constituents: PBS, 50% Glycerol (glycerin, glycerine), 0.87% Sodium chloride</p>
纯度	Without Mg2+ and Ca2+
克隆	Immunogen affinity purified
同种型	多克隆
	IgG

应用

The Abpromise guarantee

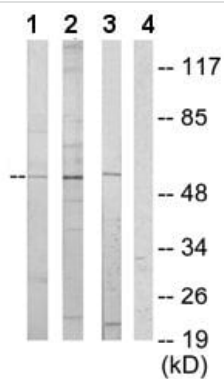
Abpromise™承诺保证使用ab64909于以下的经测试应用

“应用说明”部分 下显示的仅为推荐的起始稀释度;实际最佳的稀释度/浓度应由使用者检定。

应用	Ab评论	说明
ICC/IF		1/500 - 1/1000.
WB		1/500 - 1/1000. Detects a band of approximately 53 kDa (predicted molecular weight: 53 kDa).

靶标	
功能	Transcriptional repressor; binds to the DNA sequence 5'-CCGGAAGT-3'.
组织特异性	Ubiquitous.
疾病相关	<p>Note=A chromosomal aberration involving ETV6 is found in a form of chronic myelomonocytic leukemia (CMML). Translocation t(5;12)(q33;p13) with PDGFRB. It is characterized by abnormal clonal myeloid proliferation and by progression to acute myelogenous leukemia (AML).</p> <p>Note=Chromosomal aberrations involving ETV6 are found in a form of acute myeloid leukemia (AML). Translocation t(12;22)(p13;q11) with MN1; translocation t(4;12)(q12;p13) with CHIC2.</p> <p>Note=Chromosomal aberrations involving ETV6 are found in childhood acute lymphoblastic leukemia (ALL). Translocations t(12;21)(p12;q22) and t(12;21)(p13;q22) with RUNX1/AML1.</p> <p>Note=A chromosomal aberration involving ETV6 is found in a form of pre-B acute myeloid leukemia. Translocation t(9;12)(p24;p13) with JAK2.</p> <p>Note=A chromosomal aberration involving ETV6 is found in myelodysplastic syndrome (MDS) with basophilia. Translocation t(5;12)(q31;p13) with ACSL6.</p> <p>Note=A chromosomal aberration involving ETV6 is found in acute eosinophilic leukemia (AEL). Translocation t(5;12)(q31;p13) with ACSL6.</p> <p>Note=A chromosomal aberration involving ETV6 is found in myelodysplastic syndrome (MDS). Translocation t(1;12)(p36.1;p13) with MDS2.</p> <p>Defects in ETV6 are a cause of myeloproliferative disorder chronic with eosinophilia (MPE) [MIM:131440]. A hematologic disorder characterized by malignant eosinophils proliferation.</p> <p>Note=A chromosomal aberration involving ETV6 is found in many instances of myeloproliferative disorder chronic with eosinophilia. Translocation t(5;12) with PDGFRB on chromosome 5 creating an ETV6-PDGFRB fusion protein.</p> <p>Defects in ETV6 are a cause of acute myelogenous leukemia (AML) [MIM:601626]. AML is a malignant disease in which hematopoietic precursors are arrested in an early stage of development.</p> <p>Note=A chromosomal aberration involving ETV6 is found in acute lymphoblastic leukemia. Translocation t(9;12)(p13;p13) with PAX5.</p>
序列相似性	<p>Belongs to the ETS family.</p> <p>Contains 1 ETS DNA-binding domain.</p> <p>Contains 1 PNT (pointed) domain.</p>
翻译后修饰	Phosphorylation of Ser-257 by MAPK14 (p38) inhibits ETV6 transcriptional repression.
细胞定位	Nucleus.

图片



Western blot - Anti-ETV6 / Tel antibody (ab64909)

All lanes : Anti-ETV6 / Tel antibody (ab64909) at 1/500 dilution

Lane 1 : extracts from HeLa cells

Lane 2 : extracts from HepG2 cells

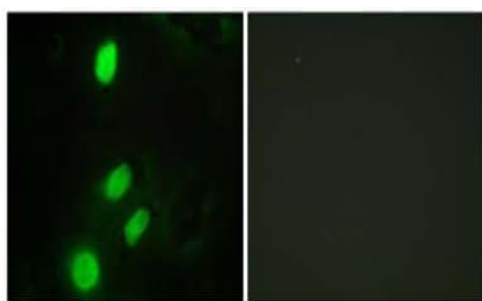
Lane 3 : extracts from Jurkat cells

Lane 4 : extracts from Jurkat cells with immunising peptide at 10 µg

Lysates/proteins at 30 µg per lane.

Predicted band size: 53 kDa

Observed band size: 53 kDa



Immunocytochemistry/ Immunofluorescence - Anti-ETV6 / Tel antibody (ab64909)

ab64909, at 1/500 dilution, staining HeLa cells by immunofluorescence in the absence (left) or presence (right) of immunising peptide.

Please note: All products are "FOR RESEARCH USE ONLY. NOT FOR USE IN DIAGNOSTIC PROCEDURES"

Our Abpromise to you: Quality guaranteed and expert technical support

- Replacement or refund for products not performing as stated on the datasheet
- Valid for 12 months from date of delivery
- Response to your inquiry within 24 hours
- We provide support in Chinese, English, French, German, Japanese and Spanish
- Extensive multi-media technical resources to help you
- We investigate all quality concerns to ensure our products perform to the highest standards

If the product does not perform as described on this datasheet, we will offer a refund or replacement. For full details of the Abpromise, please visit <https://www.abcam.cn/abpromise> or contact our technical team.

Terms and conditions

- Guarantee only valid for products bought direct from Abcam or one of our authorized distributors