

Anti-ETS1 (phospho T38) antibody ab59179

★★★★★ [1 Abreviews](#) [11 References](#) [1 图像](#)

概述

产品名称	Anti-ETS1 (phospho T38)抗体
描述	兔多克隆抗体to ETS1 (phospho T38)
宿主	Rabbit
经测试应用	适用于: IHC-P
种属反应性	与反应: Human
免疫原	Synthetic peptide corresponding to Human ETS1 aa 1-100 (phospho T38). Database link: P14921
常规说明	<p>The Life Science industry has been in the grips of a reproducibility crisis for a number of years. Abcam is leading the way in addressing this with our range of recombinant monoclonal antibodies and knockout edited cell lines for gold-standard validation. Please check that this product meets your needs before purchasing.</p> <p>If you have any questions, special requirements or concerns, please send us an inquiry and/or contact our Support team ahead of purchase. Recommended alternatives for this product can be found below, along with publications, customer reviews and Q&As</p>

性能

形式	Liquid
存放说明	Shipped at 4°C. Store at -20°C. Stable for 12 months at -20°C.
存储溶液	<p>pH: 7.40</p> <p>Preservative: 0.02% Sodium azide</p> <p>Constituents: PBS, 50% Glycerol (glycerin, glycerine), 0.87% Sodium chloride</p> <p>Without Mg+2 and Ca+2</p>
纯度	Immunogen affinity purified
纯化说明	Affinity purified from rabbit antiserum by affinity chromatography using epitope specific phosphopeptide. The antibody against non phosphopeptide was removed by chromatography using non phosphopeptide corresponding to the phosphorylation site.
克隆	多克隆
同种型	IgG

应用

The Abpromise guarantee **Abpromise™**承诺保证使用ab59179于以下的经测试应用

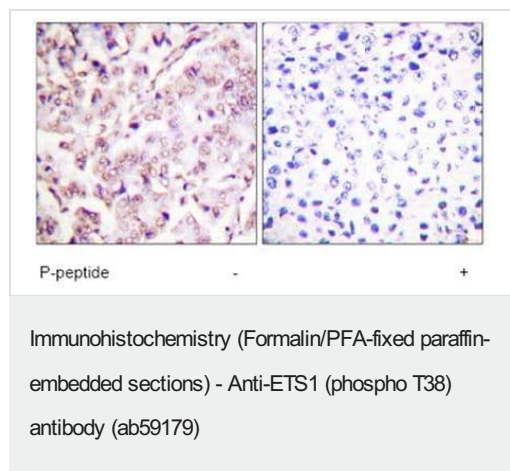
“应用说明”部分 下显示的仅为推荐的起始稀释度;实际最佳的稀释度/浓度应由使用者检定。

应用	Ab评论	说明
IHC-P		Use at an assay dependent concentration.

靶标

功能	Transcription factor.
序列相似性	Belongs to the ETS family. Contains 1 ETS DNA-binding domain. Contains 1 PNT (pointed) domain.
翻译后修饰	Sumoylated on Lys-15 and Lys-227, preferentially by SUMO2; which inhibits transcriptional activity. Ubiquitinated; which induces proteasomal degradation.
细胞定位	Nucleus.

图片



Immunohistochemical analysis of paraffin embedded human breast carcinoma tissue using ab59179 at 1/50 dilution. Left: untreated. Right: sample treated with immunising peptide.

Please note: All products are "FOR RESEARCH USE ONLY. NOT FOR USE IN DIAGNOSTIC PROCEDURES"

Our Abpromise to you: Quality guaranteed and expert technical support

- Replacement or refund for products not performing as stated on the datasheet
- Valid for 12 months from date of delivery
- Response to your inquiry within 24 hours
- We provide support in Chinese, English, French, German, Japanese and Spanish
- Extensive multi-media technical resources to help you

- We investigate all quality concerns to ensure our products perform to the highest standards

If the product does not perform as described on this datasheet, we will offer a refund or replacement. For full details of the Abpromise, please visit <https://www.abcam.cn/abpromise> or contact our technical team.

Terms and conditions

- Guarantee only valid for products bought direct from Abcam or one of our authorized distributors