


Anti-ETFB antibody ab73986

2 References 1 图像

概述	
产品名称	Anti-ETFB抗体
描述	兔多克隆抗体to ETFB
宿主	Rabbit
经测试应用	适用于: IHC-P
种属反应性	与反应: Human 预测可用于: Mouse, Rat 
免疫原	Synthetic peptide derived from the C-terminal domain of human ETFB
常规说明	<p>The Life Science industry has been in the grips of a reproducibility crisis for a number of years. Abcam is leading the way in addressing this with our range of recombinant monoclonal antibodies and knockout edited cell lines for gold-standard validation. Please check that this product meets your needs before purchasing.</p> <p>If you have any questions, special requirements or concerns, please send us an inquiry and/or contact our Support team ahead of purchase. Recommended alternatives for this product can be found below, along with publications, customer reviews and Q&amp;As</p>
性能	
形式	Liquid
存放说明	Shipped at 4°C. Upon delivery aliquot and store at -20°C or -80°C. Avoid repeated freeze / thaw cycles.
存储溶液	Constituent: Whole serum
纯度	Whole antiserum
克隆	多克隆
同种型	IgG
应用	

The Abpromise guarantee      **Abpromise™**承诺保证使用ab73986于以下的经测试应用

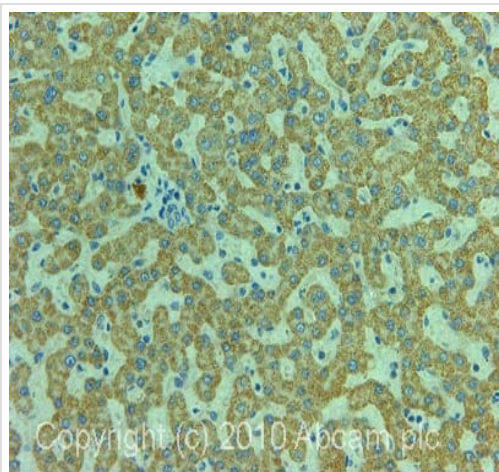
“应用说明”部分 下显示的仅为推荐的起始稀释度;实际最佳的稀释度/浓度应由使用者检定。

应用	Ab评论	说明
IHC-P		1/50 - 1/100.

## 靶标

功能	The electron transfer flavoprotein serves as a specific electron acceptor for several dehydrogenases, including five acyl-CoA dehydrogenases, glutaryl-CoA and sarcosine dehydrogenase. It transfers the electrons to the main mitochondrial respiratory chain via ETF-ubiquinone oxidoreductase (ETF dehydrogenase).
组织特异性	Abundant in liver, heart and skeletal muscle. A weak expression is seen in the brain, placenta, lung, kidney and pancreas.
疾病相关	Glutaric aciduria 2B
序列相似性	Belongs to the ETF beta-subunit/FixA family.
结构域	The recognition loop recognizes a hydrophobic patch at the surface of interacting dehydrogenases and acts as a static anchor at the interface.
翻译后修饰	Methylated. Trimethylation at Lys-200 and Lys-203 may negatively regulate the activity in electron transfer from Acyl-CoA dehydrogenases.
细胞定位	Mitochondrion matrix.

## 图片



Immunohistochemistry (Formalin/PFA-fixed paraffin-embedded sections) - Anti-ETFB antibody (ab73986)

IHC image of ab73986 staining in human liver formalin fixed paraffin embedded tissue section, performed on a Leica Bond™ system using the standard protocol F. The section was pre-treated using heat mediated antigen retrieval with sodium citrate buffer (pH6, epitope retrieval solution 1) for 20 mins. The section was then incubated with ab73986, 5µg/ml, for 15 mins at room temperature and detected using an HRP conjugated compact polymer system. DAB was used as the chromogen. The section was then counterstained with haematoxylin and mounted with DPX.

For other IHC staining systems (automated and non-automated) customers should optimize variable parameters such as antigen retrieval conditions, primary antibody concentration and antibody incubation times.

**Please note:** All products are "FOR RESEARCH USE ONLY. NOT FOR USE IN DIAGNOSTIC PROCEDURES"

**Our Abpromise to you: Quality guaranteed and expert technical support**

- Replacement or refund for products not performing as stated on the datasheet
- Valid for 12 months from date of delivery
- Response to your inquiry within 24 hours
- We provide support in Chinese, English, French, German, Japanese and Spanish
- Extensive multi-media technical resources to help you
- We investigate all quality concerns to ensure our products perform to the highest standards

If the product does not perform as described on this datasheet, we will offer a refund or replacement. For full details of the Abpromise, please visit <https://www.abcam.cn/abpromise> or contact our technical team.

#### **Terms and conditions**

---

- Guarantee only valid for products bought direct from Abcam or one of our authorized distributors