

### Anti-ERp57 antibody [MaP.Erp57] ab13506

敲除验证

★★★★★ [7 Abreviews](#) [36 References](#) [6 图像](#)

#### 概述

产品名称	Anti-ERp57抗体[MaP.Erp57]
描述	小鼠单克隆抗体[MaP.Erp57] to ERp57
宿主	Mouse
经测试应用	适用于: IHC-P, WB, ICC/IF, Flow Cyt
种属反应性	与反应: Mouse, Human
免疫原	Recombinant full length protein (Human).
阳性对照	WB: HAP1, HepG2 and HEK-293 whole cell lysate; mouse pancreatic cancer cell lysate. ICC/IF: HeLa and HaCaT cells. IHC-P: Muse backskin tissue. IHC-Fr: Mouse duodenum, pancreas, and pancreatic neoplastic tissue. Flow Cyt: HeLa cells.
常规说明	<p>The Life Science industry has been in the grips of a reproducibility crisis for a number of years. Abcam is leading the way in addressing this with our range of recombinant monoclonal antibodies and knockout edited cell lines for gold-standard validation. Please check that this product meets your needs before purchasing.</p> <p>If you have any questions, special requirements or concerns, please send us an inquiry and/or contact our Support team ahead of purchase. Recommended alternatives for this product can be found below, along with publications, customer reviews and Q&amp;As</p>

#### 性能

形式	Liquid
存放说明	Shipped at 4°C. Upon delivery aliquot and store at -20°C. Avoid freeze / thaw cycles.
存储溶液	Preservative: 0.09% Sodium azide Constituents: PBS, 50% Glycerol
纯度	Protein G purified
纯化说明	This antibody is affinity purified.
克隆	单克隆
克隆编号	MaP.Erp57
同种型	IgG1

**The Abpromise guarantee**      **Abpromise™**承诺保证使用ab13506于以下的经测试应用

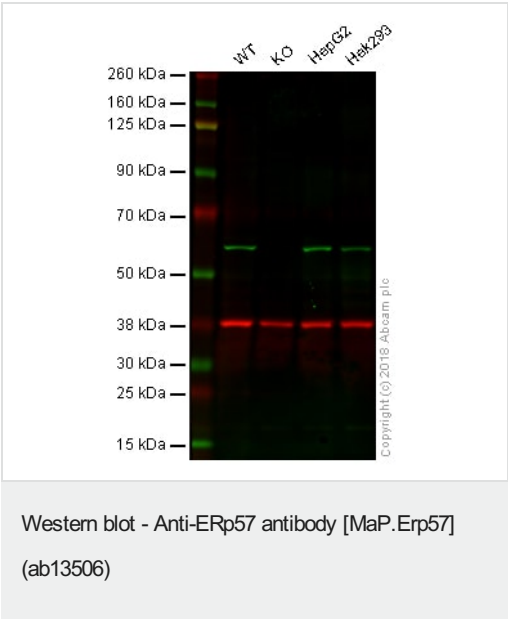
“应用说明”部分 下显示的仅为推荐的起始稀释度;实际最佳的稀释度/浓度应由使用者检定。

应用	Ab评论	说明
IHC-P		1/100.
WB	★★★★★ (3)	1/2000. Predicted molecular weight: 61 kDa. This concentration is sufficient for the detection of ERp57 in 20µg of HeLa heat shocked cell lysate by colorimetric analysis.
ICC/IF		1/100.
Flow Cyt		Use 1-2µg for 10 <sup>6</sup> cells. <b>ab170190</b> - Mouse monoclonal IgG1, is suitable for use as an isotype control with this antibody.

靶标

组织特异性	Detected in the flagellum and head region of spermatozoa (at protein level).
序列相似性	Belongs to the protein disulfide isomerase family. Contains 2 thioredoxin domains.
细胞定位	Endoplasmic reticulum lumen. Melanosome. Identified by mass spectrometry in melanosome fractions from stage I to stage IV.

图片

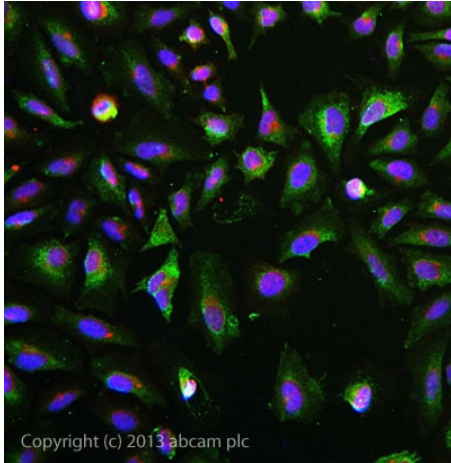


**Lane 1:** Wild-type HAP1 whole cell lysate (20 µg)  
**Lane 2:** ERp57 knockout HAP1 whole cell lysate (20 µg)  
**Lane 3:** HepG2 whole cell lysate (20 µg)  
**Lane 4:** HEK293 whole cell lysate (20 µg)

**Lanes 1 - 4:** Merged signal (red and green). Green - ab13506 observed at 57 kDa. Red - loading control, **ab181602**, observed at 37 kDa.

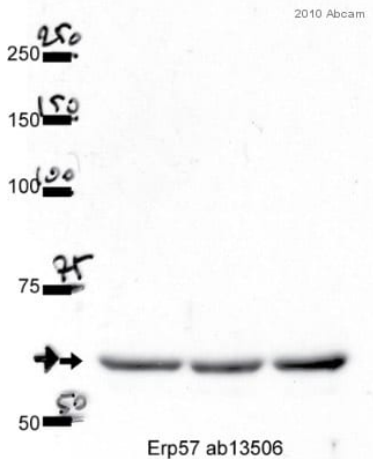
ab13506 was shown to specifically react with ERp57 in wild-type HAP1 cells as signal was lost in ERp57 knockout cells. Wild-type and ERp57 knockout samples were subjected to SDS-PAGE. ab13506 and **ab181602** (Rabbit anti-GAPDH loading control) were incubated overnight at 4°C at 0.5 µg/ml and 1/20000 dilution respectively. Blots were developed with Goat anti-Mouse IgG H&L (IRDye® 800CW) preabsorbed **ab216772** and Goat anti-Rabbit IgG H&L (IRDye® 680RD) preabsorbed **ab216777** secondary antibodies at 1/20000 dilution for 1 hour at room temperature

before imaging.



Immunocytochemistry/ Immunofluorescence - Anti-ERp57 antibody [MaP.Erp57] (ab13506)

ICC/IF image of ab13506 stained HeLa cells. The cells were 4% formaldehyde fixed (10 min) and then incubated in 1%BSA / 10% normal goat serum / 0.3M glycine in 0.1% PBS-Tween for 1h to permeabilise the cells and block non-specific protein-protein interactions. The cells were then incubated with the antibody ab13506 at 5µg/ml overnight at +4°C. The secondary antibody (green) was DyLight® 488 goat anti- mouse ([ab96879](#)) IgG (H+L) used at a 1/250 dilution for 1h. Alexa Fluor® 594 WGA was used to label plasma membranes (red) at a 1/200 dilution for 1h. DAPI was used to stain the cell nuclei (blue) at a concentration of 1.43µM.



Western blot - Anti-ERp57 antibody [MaP.Erp57] (ab13506)

This image is courtesy of an Abreview submitted by Pawel Mazur

ERp57 antibody (ab13506) at 1/1000 dilution (in PBST) for 8 hours at 4°C + lysate of mouse of pancreatic cancer cell line at 25 µg.

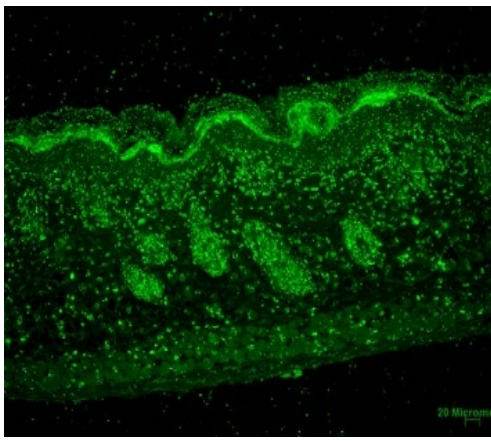
### Secondary

An HRP conjugated Sheep anti-mouse IgG polyclonal at 1/5000 dilution developed using the ECL technique

Performed under non-reducing conditions.

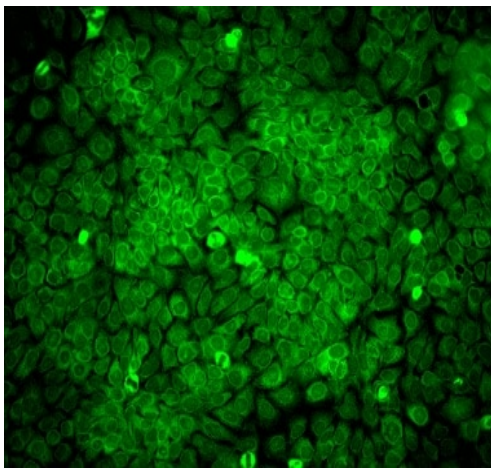
**Exposure time:** 1 minute

**Blocking Step:** 10% Milk for 1 hour at room temperature.



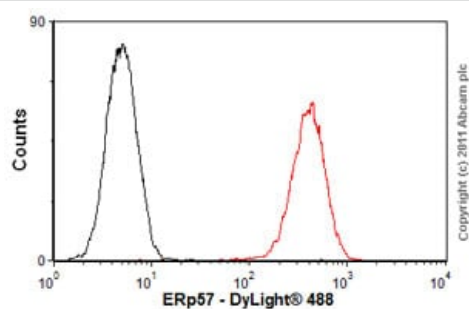
Immunohistochemistry (Formalin/PFA-fixed paraffin-embedded sections) - Anti-ERp57 antibody  
[MaP.Erp57] (ab13506)

Paraffin-embedded mouse backskin tissue fixed with Bouin's fixative, stained for ERp57 using ab13506 at 1/100 dilution in ICC/IF. Primary antibody was incubated for 1 hour at room temperature. Secondary antibody is a FITC-conjugated goat anti-mouse (green) incubated at 1/50 dilution for 1 hour at room temperature.



Immunocytochemistry/ Immunofluorescence - Anti-ERp57 antibody [MaP.Erp57] (ab13506)

HaCaT (Human keratinocyte cell line) cells labeling ERp57 using ab13506 at 1/100 dilution in ICC/IF. Cells were fixed using 100% methanol for 10 minutes at -20°C and incubated with primary antibody for 1 hour at room temperature. Secondary antibody is a FITC-conjugated goat anti-mouse (green) incubated at 1/50 dilution for 1 hour at room temperature.



Flow Cytometry - Anti-ERp57 antibody [MaP.Erp57] (ab13506)

Overlay histogram showing HeLa cells stained with ab13506 (red line). The cells were fixed with 80% methanol (5 min) and then permeabilized with 0.1% PBS-Tween for 20 min. The cells were then incubated in 1x PBS / 10% normal goat serum / 0.3M glycine to block non-specific protein-protein interactions. The cells were then incubated with the antibody (ab13506, 2µg/1x10<sup>6</sup> cells) for 30 min at 22°C. The secondary antibody used was DyLight® 488 goat anti-mouse IgG (H+L) ([ab96879](#)) at 1/500 dilution for 30 min at 22°C. Isotype control antibody (black line) was mouse IgG1 [ICIGG1] ([ab91353](#), 2µg/1x10<sup>6</sup> cells) used under the same conditions. Acquisition of >5,000 events was performed. This antibody gave a positive signal in HeLa cells fixed with 4% paraformaldehyde (10 min)/permeabilized in 0.1% PBS-Tween used under the same conditions.

**Please note:** All products are "FOR RESEARCH USE ONLY. NOT FOR USE IN DIAGNOSTIC PROCEDURES"

### **Our Abpromise to you: Quality guaranteed and expert technical support**

---

- Replacement or refund for products not performing as stated on the datasheet
- Valid for 12 months from date of delivery
- Response to your inquiry within 24 hours
- We provide support in Chinese, English, French, German, Japanese and Spanish
- Extensive multi-media technical resources to help you
- We investigate all quality concerns to ensure our products perform to the highest standards

If the product does not perform as described on this datasheet, we will offer a refund or replacement. For full details of the Abpromise, please visit <https://www.abcam.cn/abpromise> or contact our technical team.

### **Terms and conditions**

---

- Guarantee only valid for products bought direct from Abcam or one of our authorized distributors