

Anti-ERp57 antibody ab10287

★★★★★ [2 Abreviews](#) [37 References](#) [4 图像](#)

概述

产品名称	Anti-ERp57抗体
描述	兔多克隆抗体to ERp57
宿主	Rabbit
经测试应用	适用于: ICC/IF, WB
种属反应性	与反应: Mouse, Human
免疫原	Recombinant full length protein corresponding to Mouse ERp57. Database link: P27773
阳性对照	WB: Mouse embryonic cells.
常规说明	<p>The Life Science industry has been in the grips of a reproducibility crisis for a number of years. Abcam is leading the way in addressing this with our range of recombinant monoclonal antibodies and knockout edited cell lines for gold-standard validation. Please check that this product meets your needs before purchasing.</p> <p>If you have any questions, special requirements or concerns, please send us an inquiry and/or contact our Support team ahead of purchase. Recommended alternatives for this product can be found below, along with publications, customer reviews and Q&As</p>

性能

形式	Liquid
存放说明	Shipped at 4°C. Store at +4°C short term (1-2 weeks). Upon delivery aliquot. Store at -20°C or -80°C. Avoid freeze / thaw cycle.
纯度	Whole antiserum
克隆	多克隆
同种型	IgG

应用

The Abpromise guarantee **Abpromise™** 承诺保证使用ab10287于以下的经测试应用

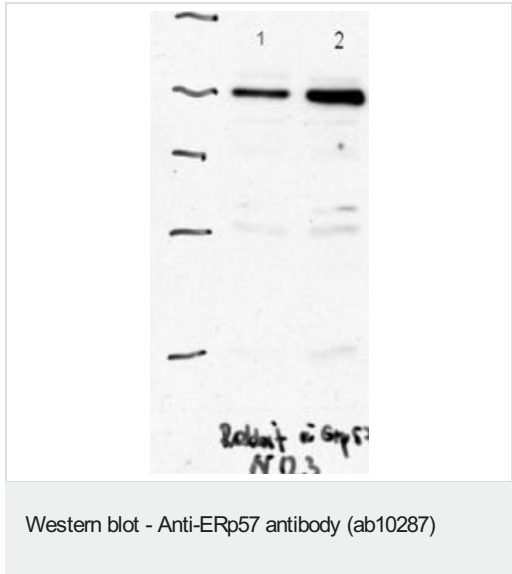
“应用说明”部分 下显示的仅为推荐的起始稀释度;实际最佳的稀释度/浓度应由使用者检定。

应用	Ab评论	说明
ICC/IF	★★★★★ (1)	Use at an assay dependent concentration.
WB	★★★★★ (1)	1/1000 - 1/3000. Detects a band of approximately 57 kDa (predicted molecular weight: 61 kDa).

靶标

组织特异性	Detected in the flagellum and head region of spermatozoa (at protein level).
序列相似性	Belongs to the protein disulfide isomerase family. Contains 2 thioredoxin domains.
细胞定位	Endoplasmic reticulum lumen. Melanosome. Identified by mass spectrometry in melanosome fractions from stage I to stage IV.

图片



All lanes : Anti-ERp57 antibody (ab10287) at 1/1000 dilution

Lane 1 : Mouse embryonic cells

Lane 2 : Calreticulin deficient mouse embryonic cells

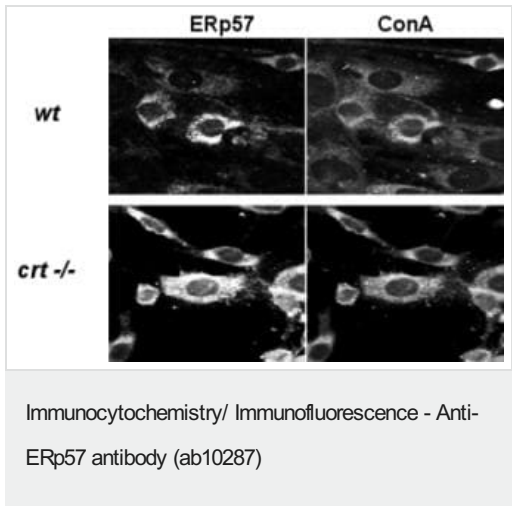
Predicted band size: 61 kDa

Observed band size: 57 kDa

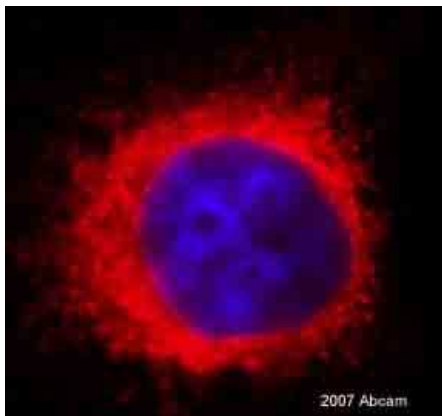
Western blot using ab10287 at 1/1000.

Lane 1 – Mouse Embryonic Fibroblasts.

Lane 2 – Calreticulin deficient Mouse Embryonic Fibroblasts.



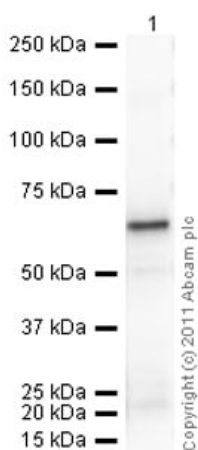
Double staining of mouse embryonic fibroblasts (top) and calreticulin deficient fibroblasts (bottom) with rabbit-anti-ERp57 antibodies (1:100; upper and lower left panel) and FITC-ConA (upper and lower right panel).



Immunocytochemistry/ Immunofluorescence - Anti-ERp57 antibody (ab10287)

This image is courtesy of an anonymous Abreview

ab10287 at 1/100 staining human HeLa cells by ICC/IF. The cells were permeabilized with digitonin before being blocked and then stained with the antibody for 1 hour. An Alexa-Fluor® conjugated goat anti rabbit antibody was used as the secondary.



Western blot - Anti-ERp57 antibody (ab10287)

Anti-ERp57 antibody (ab10287) at 1/1000 dilution + Recombinant Human ERp57 protein ([ab92937](#)) at 0.01 µg

Secondary

Goat polyclonal to Rabbit IgG - H&L - Pre-Adsorbed (HRP) ([ab65484](#)) at 1/5000 dilution

Developed using the ECL technique.

Performed under reducing conditions.

Predicted band size: 61 kDa

Exposure time: 150 seconds

Please note: All products are "FOR RESEARCH USE ONLY. NOT FOR USE IN DIAGNOSTIC PROCEDURES"

Our Abpromise to you: Quality guaranteed and expert technical support

- Replacement or refund for products not performing as stated on the datasheet
- Valid for 12 months from date of delivery
- Response to your inquiry within 24 hours
- We provide support in Chinese, English, French, German, Japanese and Spanish
- Extensive multi-media technical resources to help you
- We investigate all quality concerns to ensure our products perform to the highest standards

If the product does not perform as described on this datasheet, we will offer a refund or replacement. For full details of the Abpromise, please visit <https://www.abcam.cn/abpromise> or contact our technical team.

Terms and conditions

- Guarantee only valid for products bought direct from Abcam or one of our authorized distributors