

Anti-ERK1 (phospho T202 + Y204) + ERK2 (phospho T185 + Y187) antibody [SP327] ab223500

RabMAb

46 References 5 图像

概述

产品名称	Anti-ERK1 (phospho T202 + Y204) + ERK2 (phospho T185 + Y187)抗体[SP327]
描述	兔单克隆抗体[SP327] to ERK1 (phospho T202 + Y204) + ERK2 (phospho T185 + Y187)
宿主	Rabbit
经测试应用	适用于: Flow Cyt (Intra), WB, IHC-P
种属反应性	与反应: Human
免疫原	Synthetic peptide. This information is proprietary to Abcam and/or its suppliers.
阳性对照	WB: A431 + EGF cell lysates. IHC-P: Human breast ductal carcinoma, bladder transitional cell carcinoma and breast tissues. Flow Cyt: A431 + EGF cells.
常规说明	<p>This product is FOR RESEARCH USE ONLY. For commercial use, please contact partnerships@abcam.com.</p> <p>The Life Science industry has been in the grips of a reproducibility crisis for a number of years. Abcam is leading the way in addressing this with our range of recombinant monoclonal antibodies and knockout edited cell lines for gold-standard validation. Please check that this product meets your needs before purchasing.</p> <p>If you have any questions, special requirements or concerns, please send us an inquiry and/or contact our Support team ahead of purchase. Recommended alternatives for this product can be found below, along with publications, customer reviews and Q&As</p>

性能

形式	Liquid
存放说明	Shipped at 4°C. Store at +4°C short term (1-2 weeks). Upon delivery aliquot. Store at -20°C long term. Avoid freeze / thaw cycle.
存储溶液	pH: 7.60 Preservative: 0.1% Sodium azide Constituents: PBS, 1% BSA
纯度	Protein A/G purified

克隆 单克隆
克隆编号 SP327
同种型 IgG

应用

The Abpromise guarantee **Abpromise™**承诺保证使用ab223500于以下的经测试应用

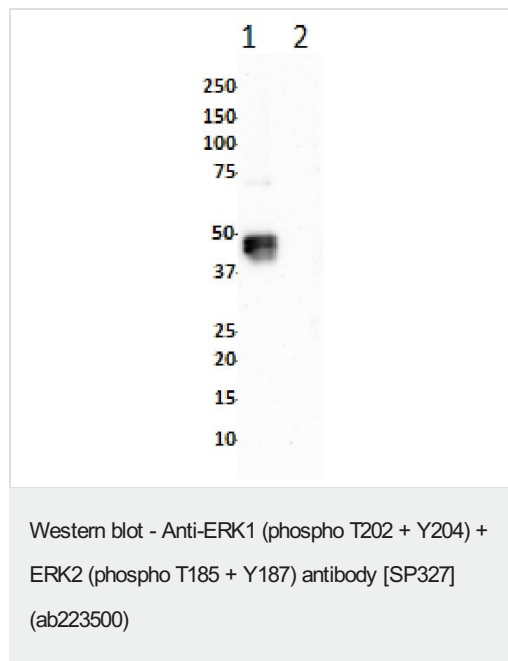
“应用说明”部分下显示的仅为推荐的起始稀释度;实际最佳的稀释度/浓度应由使用者检定。

应用	Ab评论	说明
Flow Cyt (Intra)		1/100.
WB		1/400. Predicted molecular weight: 42,44 kDa.
IHC-P		1/100. Perform heat mediated antigen retrieval with citrate buffer pH 6 before commencing with IHC staining protocol.

靶标

细胞定位 ERK2: Nucleus.

图片

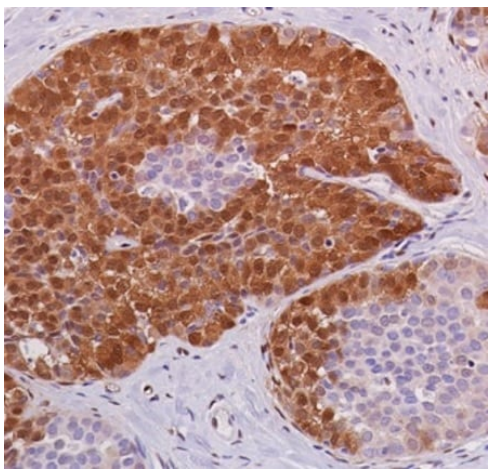


All lanes : Anti-ERK1 (phospho T202 + Y204) + ERK2 (phospho T185 + Y187) antibody [SP327] (ab223500) at 1/400 dilution

Lane 1 : A431 (human epidermoid carcinoma cell line) + EGF cell lysate

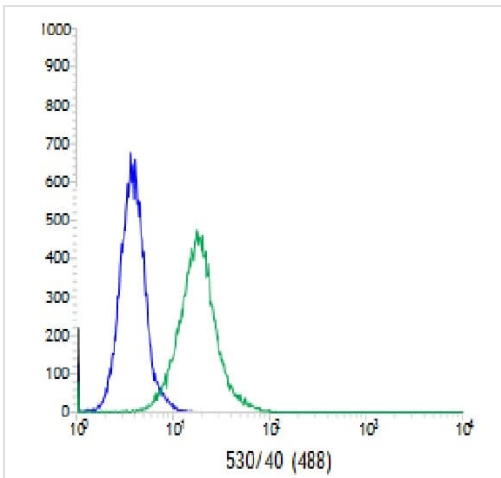
Lane 2 : A431 (human epidermoid carcinoma cell line) cell lysate

Predicted band size: 42,44 kDa



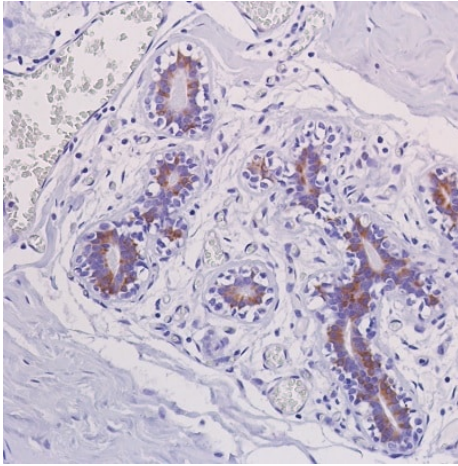
Paraffin-embedded human breast ductal carcinoma tissue stained for ERK1 + ERK2 (phospho T202 + Y204) using ab223500 at 1/100 dilution in immunohistochemical analysis.

Immunohistochemistry (Formalin/PFA-fixed paraffin-embedded sections) - Anti-ERK1 (phospho T202 + Y204) + ERK2 (phospho T185 + Y187) antibody [SP327] (ab223500)



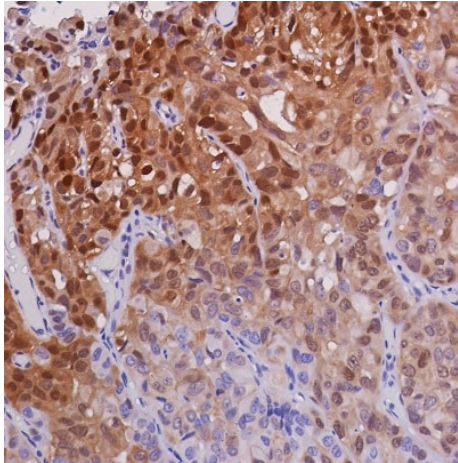
Flow cytometric analysis of ab223500 in A431 (human epidermoid carcinoma cell line) cells + EGF (green) at 1/100 dilution compared to negative control of rabbit IgG (blue).

Flow Cytometry (Intracellular) - Anti-ERK1 (phospho T202 + Y204) + ERK2 (phospho T185 + Y187) antibody [SP327] (ab223500)



Paraffin-embedded human breast tissue stained for ERK1 + ERK2 (phospho T202 + Y204) using ab2223500 at 1/100 dilution in immunohistochemical analysis.

Immunohistochemistry (Formalin/PFA-fixed paraffin-embedded sections) - Anti-ERK1 (phospho T202 + Y204) + ERK2 (phospho T185 + Y187) antibody [SP327] (ab2223500)



Paraffin-embedded human bladder transitional cell carcinoma tissue stained for ERK1 + ERK2 (phospho T202 + Y204) using ab2223500 at 1/100 dilution in immunohistochemical analysis.

Immunohistochemistry (Formalin/PFA-fixed paraffin-embedded sections) - Anti-ERK1 (phospho T202 + Y204) + ERK2 (phospho T185 + Y187) antibody [SP327] (ab2223500)

Please note: All products are "FOR RESEARCH USE ONLY. NOT FOR USE IN DIAGNOSTIC PROCEDURES"

Our Abpromise to you: Quality guaranteed and expert technical support

- Replacement or refund for products not performing as stated on the datasheet
- Valid for 12 months from date of delivery
- Response to your inquiry within 24 hours

- We provide support in Chinese, English, French, German, Japanese and Spanish
- Extensive multi-media technical resources to help you
- We investigate all quality concerns to ensure our products perform to the highest standards

If the product does not perform as described on this datasheet, we will offer a refund or replacement. For full details of the Abpromise, please visit <https://www.abcam.cn/abpromise> or contact our technical team.

Terms and conditions

- Guarantee only valid for products bought direct from Abcam or one of our authorized distributors