


Anti-ERG antibody [EPR3863] ab110639

重组 RabMAb

★★★★★ 2 Abreviews 31 References 4 图像

概述

产品名称	Anti-ERG抗体[EPR3863]
描述	兔单克隆抗体[EPR3863] to ERG
宿主	Rabbit
经测试应用	适用于: WB, IHC-P 不适用于: Flow Cyt, ICC/IF or IP
种属反应性	与反应: Human 预测可用于: Mouse 
免疫原	Synthetic peptide. This information is proprietary to Abcam and/or its suppliers.
阳性对照	WB: Jurkat, HT29, and MCF7 cell lysates. IHC-P: Human spleen and tonsil tissues.
常规说明	<p>This product is a recombinant monoclonal antibody, which offers several advantages including:</p> <ul style="list-style-type: none">- High batch-to-batch consistency and reproducibility- Improved sensitivity and specificity- Long-term security of supply- Animal-free production <p>For more information see here.</p> <p>Our RabMAb[®] technology is a patented hybridoma-based technology for making rabbit monoclonal antibodies. For details on our patents, please refer to RabMAb[®] patents.</p> <p>Rat: We have preliminary internal testing data to indicate this antibody may not react with this species. Please contact us for more information.</p>

性能

形式	Liquid
存放说明	Shipped at 4°C. Store at -20°C. Stable for 12 months at -20°C.
存储溶液	pH: 7.20 Preservative: 0.05% Sodium azide Constituents: 0.1% BSA, 40% Glycerol (glycerin, glycerine), 9.85% Tris glycine, 50% Tissue culture supernatant
纯度	Protein A purified

克隆	单克隆
克隆编号	EPR3863
同种型	IgG

应用

The Abpromise guarantee

Abpromise™承诺保证使用ab110639于以下的经测试应用

“应用说明”部分 下显示的仅为推荐的起始稀释度;实际最佳的稀释度/浓度应由使用者检定。

应用	Ab评论	说明
WB		1/1000 - 1/10000. Predicted molecular weight: 55 kDa.
IHC-P		1/100 - 1/250. Perform heat mediated antigen retrieval with citrate buffer pH 6 before commencing with IHC staining protocol.

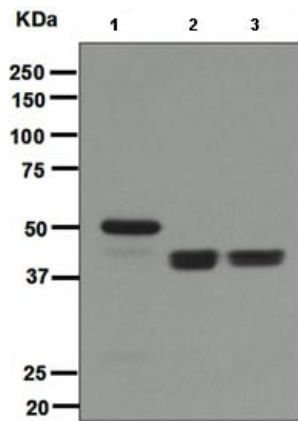
应用说明

Is unsuitable for Flow Cyt, ICC/IF or IP.

靶标

功能	Transcriptional regulator. May participate in transcriptional regulation through the recruitment of SETDB1 histone methyltransferase and subsequent modification of local chromatin structure.
疾病相关	Defects in ERG are a cause of Ewing sarcoma (ES) [MIM:612219]. A highly malignant, metastatic, primitive small round cell tumor of bone and soft tissue that affects children and adolescents. It belongs to the Ewing sarcoma family of tumors, a group of morphologically heterogeneous neoplasms that share the same cytogenetic features. They are considered neural tumors derived from cells of the neural crest. Ewing sarcoma represents the less differentiated form of the tumors. Note=A chromosomal aberration involving ERG is found in patients with Erwing sarcoma. Translocation t(21;22)(q22;q12) with EWSR1. Note=Chromosomal aberrations involving ERG have been found in acute myeloid leukemia (AML). Translocation t(16;21)(p11;q22) with FUS. Translocation t(X;21)(q25-26;q22) with ELF4.
序列相似性	Belongs to the ETS family. Contains 1 ETS DNA-binding domain. Contains 1 PNT (pointed) domain.
细胞定位	Nucleus. Cytoplasm. Localized in cytoplasmic mRNP granules containing untranslated mRNAs.

图片



Western blot - Anti-ERG antibody [EPR3863]
(ab110639)

All lanes : Anti-ERG antibody [EPR3863] (ab110639) at 1/1000 dilution

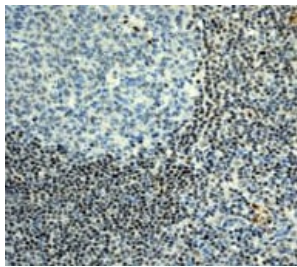
Lane 1 : Jurkat cell lysate

Lane 2 : HT29 cell lysate

Lane 3 : MCF7 cell lysate

Lysates/proteins at 10 µg per lane.

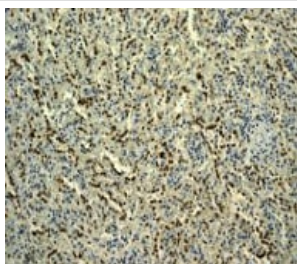
Predicted band size: 55 kDa



Immunohistochemistry (Formalin/PFA-fixed paraffin-embedded sections) - Anti-ERG antibody [EPR3863]
(ab110639)

ab110639 at 1/100 dilution staining ERG in Human tonsil by Immunohistochemistry, Paraffin-embedded tissue.

Perform heat mediated antigen retrieval with citrate buffer pH 6 before commencing with IHC staining protocol.



Immunohistochemistry (Formalin/PFA-fixed paraffin-embedded sections) - Anti-ERG antibody [EPR3863]
(ab110639)

ab110639 at 1/100 dilution staining ERG in Human spleen by Immunohistochemistry, Paraffin-embedded tissue.

Perform heat mediated antigen retrieval with citrate buffer pH 6 before commencing with IHC staining protocol.

Why choose a recombinant antibody?



Research with confidence
Consistent and reproducible results



Long-term and scalable supply
Recombinant technology



Success from the first experiment
Confirmed specificity



Ethical standards compliant
Animal-free production

Anti-ERG antibody [EPR3863] (ab110639)

Please note: All products are "FOR RESEARCH USE ONLY. NOT FOR USE IN DIAGNOSTIC PROCEDURES"

Our Abpromise to you: Quality guaranteed and expert technical support

- Replacement or refund for products not performing as stated on the datasheet
- Valid for 12 months from date of delivery
- Response to your inquiry within 24 hours
- We provide support in Chinese, English, French, German, Japanese and Spanish
- Extensive multi-media technical resources to help you
- We investigate all quality concerns to ensure our products perform to the highest standards

If the product does not perform as described on this datasheet, we will offer a refund or replacement. For full details of the Abpromise, please visit <https://www.abcam.cn/abpromise> or contact our technical team.

Terms and conditions

- Guarantee only valid for products bought direct from Abcam or one of our authorized distributors