

# Anti-ERG antibody ab96697

[1 References](#) [3 图像](#)

### 概述

---

<b>产品名称</b>	Anti-ERG抗体
<b>描述</b>	兔多克隆抗体to ERG
<b>宿主</b>	Rabbit
<b>经测试应用</b>	<b>适用于:</b> WB, ICC/IF
<b>种属反应性</b>	<b>与反应:</b> Human
<b>免疫原</b>	Synthetic peptide corresponding to Human ERG aa 445-457.
<b>阳性对照</b>	WB: 293T, A431, H1299, HeLa, HepG2, MOLT4 and Raji cell lysates ICC/IF: Human pancreatic cancer cell line
<b>常规说明</b>	<p>The Life Science industry has been in the grips of a reproducibility crisis for a number of years. Abcam is leading the way in addressing this with our range of recombinant monoclonal antibodies and knockout edited cell lines for gold-standard validation. Please check that this product meets your needs before purchasing.</p> <p>If you have any questions, special requirements or concerns, please send us an inquiry and/or contact our Support team ahead of purchase. Recommended alternatives for this product can be found below, along with publications, customer reviews and Q&amp;As</p>

### 性能

---

<b>形式</b>	Liquid
<b>存放说明</b>	Shipped at 4°C. Upon delivery aliquot and store at -20°C or -80°C. Avoid repeated freeze / thaw cycles.
<b>存储溶液</b>	pH: 7.00 Preservative: 0.01% Thimerosal (merthiolate) Constituents: 79.99% PBS, 20% Glycerol (glycerin, glycerine)
<b>纯度</b>	Protein A purified
<b>克隆</b>	多克隆
<b>同种型</b>	IgG

### 应用

---

## The Abpromise guarantee

**Abpromise™** 承诺保证使用 ab96697 于以下的经测试应用

“应用说明”部分下显示的仅为推荐的起始稀释度；实际最佳的稀释度/浓度应由使用者检定。

应用	Ab评论	说明
WB		1/1000. Predicted molecular weight: 55 kDa.
ICC/IF		1/50.

## 靶标

### 功能

Transcriptional regulator. May participate in transcriptional regulation through the recruitment of SETDB1 histone methyltransferase and subsequent modification of local chromatin structure.

### 疾病相关

Defects in ERG are a cause of Ewing sarcoma (ES) [MIM:612219]. A highly malignant, metastatic, primitive small round cell tumor of bone and soft tissue that affects children and adolescents. It belongs to the Ewing sarcoma family of tumors, a group of morphologically heterogeneous neoplasms that share the same cytogenetic features. They are considered neural tumors derived from cells of the neural crest. Ewing sarcoma represents the less differentiated form of the tumors. Note=A chromosomal aberration involving ERG is found in patients with Erwing sarcoma. Translocation t(21;22)(q22;q12) with EWSR1.  
Note=Chromosomal aberrations involving ERG have been found in acute myeloid leukemia (AML). Translocation t(16;21)(p11;q22) with FUS. Translocation t(X;21)(q25-26;q22) with ELF4.

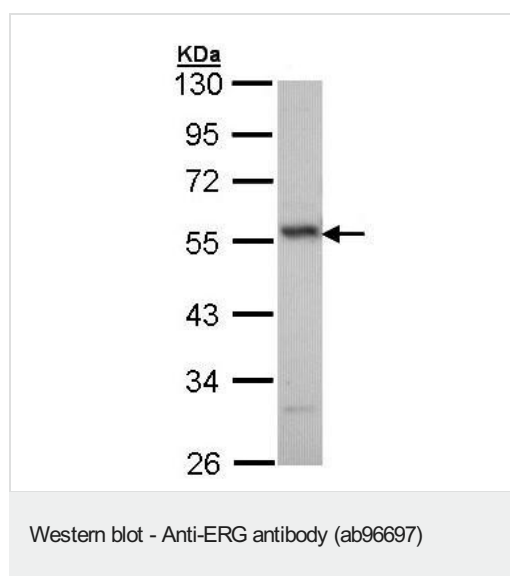
### 序列相似性

Belongs to the ETS family.  
Contains 1 ETS DNA-binding domain.  
Contains 1 PNT (pointed) domain.

### 细胞定位

Nucleus. Cytoplasm. Localized in cytoplasmic mRNP granules containing untranslated mRNAs.

## 图片



Anti-ERG antibody (ab96697) at 1/1000 dilution + H1299 whole cell lysate at 30  $\mu$ g

**Predicted band size:** 55 kDa

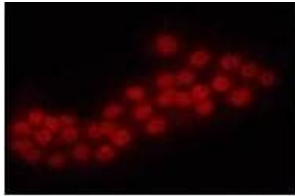
10% SDS PAGE



Immunofluorescence analysis of ERG in paraformaldehyde fixed Human pancreatic cancer cell line, using ab96697 at a 1/50 dilution.  
Lower image: merged with DNA probe.



Immunocytochemistry/ Immunofluorescence - Anti-ERG antibody (ab96697)



Immunofluorescence analysis of ERG in paraformaldehyde fixed Human pancreatic cancer cell line, using ab96697 at a 1/50 dilution.

Immunocytochemistry/ Immunofluorescence - Anti-ERG antibody (ab96697)

**Please note:** All products are "FOR RESEARCH USE ONLY. NOT FOR USE IN DIAGNOSTIC PROCEDURES"

### Our Abpromise to you: Quality guaranteed and expert technical support

---

- Replacement or refund for products not performing as stated on the datasheet
- Valid for 12 months from date of delivery
- Response to your inquiry within 24 hours
- We provide support in Chinese, English, French, German, Japanese and Spanish
- Extensive multi-media technical resources to help you
- We investigate all quality concerns to ensure our products perform to the highest standards

If the product does not perform as described on this datasheet, we will offer a refund or replacement. For full details of the Abpromise, please visit <https://www.abcam.cn/abpromise> or contact our technical team.

### Terms and conditions

---

- Guarantee only valid for products bought direct from Abcam or one of our authorized distributors