

# Anti-eRF1 antibody ab31799

**2 References**   **3 图像**

### 概述

产品名称	Anti-eRF1 抗体
描述	兔多克隆抗体 to eRF1
宿主	Rabbit
经测试应用	适用于: WB, ICC/IF
种属反应性	与反应: Mouse, Rat, Human 预测可用于: Rabbit, Cow, Xenopus laevis, Zebrafish 
免疫原	Synthetic peptide corresponding to Human eRF1 aa 400 to the C-terminus (C terminal) conjugated to keyhole limpet haemocyanin. (Peptide available as <a href="#">ab31798</a> )
常规说明	<p>The Life Science industry has been in the grips of a reproducibility crisis for a number of years. Abcam is leading the way in addressing this with our range of recombinant monoclonal antibodies and knockout edited cell lines for gold-standard validation. Please check that this product meets your needs before purchasing.</p> <p>If you have any questions, special requirements or concerns, please send us an inquiry and/or contact our Support team ahead of purchase. Recommended alternatives for this product can be found below, along with publications, customer reviews and Q&amp;As</p>

### 性能

形式	Liquid
存放说明	Shipped at 4°C. Store at +4°C short term (1-2 weeks). Upon delivery aliquot. Store at -20°C or -80°C. Avoid freeze / thaw cycle.
存储溶液	pH: 7.40 Preservative: 0.02% Sodium azide Constituent: PBS  Batches of this product that have a concentration < 1mg/ml may have BSA added as a stabilising agent. If you would like information about the formulation of a specific lot, please contact our scientific support team who will be happy to help.
纯度	Immunogen affinity purified
克隆	多克隆

同种型IgG

应用

The Abpromise guarantee Abpromise™承诺保证使用ab31799于以下的经测试应用

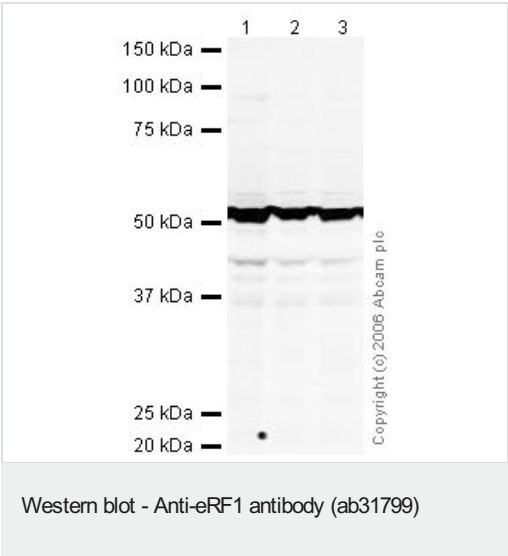
“应用说明”部分 下显示的仅为推荐的起始稀释度;实际最佳的稀释度/浓度应由使用者检定。

应用	Ab评论	说明
WB		Use a concentration of 1 µg/ml. Detects a band of approximately 50 kDa (predicted molecular weight: 49 kDa).
ICC/IF		Use a concentration of 1 µg/ml.

靶标

功能	Directs the termination of nascent peptide synthesis (translation) in response to the termination codons UAA, UAG and UGA. Component of the transient SURF complex which recruits UPF1 to stalled ribosomes in the context of nonsense-mediated decay (NMD) of mRNAs containing premature stop codons.
序列相似性	Belongs to the eukaryotic release factor 1 family.
细胞定位	Cytoplasm.

图片



**All lanes :** Anti-eRF1 antibody (ab31799) at 1 µg/ml

**Lane 1 :** HeLa (Human epithelial carcinoma cell line) Whole Cell Lysate

**Lane 2 :** Jurkat whole cell lysate ([ab7899](#))

**Lane 3 :** A-431 whole cell lysate ([ab7909](#))

Lysates/proteins at 20 µg per lane.

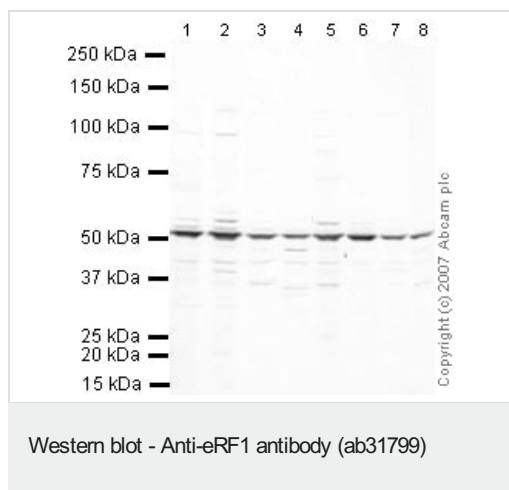
**Secondary**

**All lanes :** Goat polyclonal to Rabbit IgG (Alexa Fluor® 680) at 1/10000 dilution

Performed under reducing conditions.

**Predicted band size:** 49 kDa

**Observed band size:** 50 kDa



**All lanes :** Anti-eRF1 antibody (ab31799) at 1 µg/ml

**Lane 1 :** NIH/3T3 whole cell lysate ([ab7179](#))

**Lane 2 :** MEF1 (Mouse embryonic fibroblast cell line) Whole Cell Lysate

**Lane 3 :** Liver (Mouse) Tissue Lysate - normal tissue

**Lane 4 :** Kidney (Mouse) Tissue Lysate

**Lane 5 :** Testis (Mouse) Tissue Lysate - normal tissue

**Lane 6 :** PC12 (Rat adrenal pheochromocytoma cell line) Whole Cell Lysate

**Lane 7 :** Liver (Rat) Tissue Lysate

**Lane 8 :** Kidney (Rat) Whole Cell Lysate - normal tissue ([ab29480](#))

Lysates/proteins at 10 µg per lane.

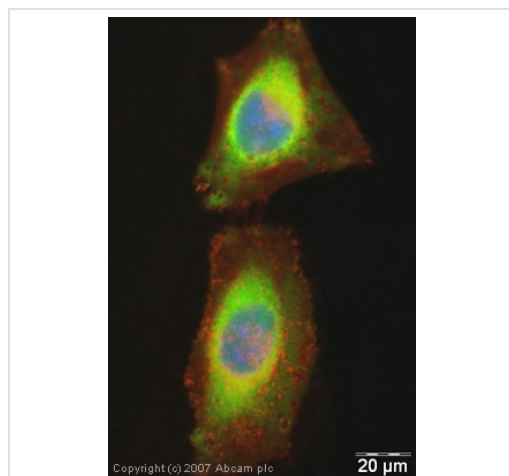
### Secondary

**All lanes :** IRDye 680 Conjugated Goat Anti-Rabbit IgG (H+L) at 1/10000 dilution

Performed under reducing conditions.

**Predicted band size:** 49 kDa

**Observed band size:** 50 kDa



Immunocytochemistry/ Immunofluorescence - Anti-eRF1 antibody (ab31799)

ICC/IF image of ab31799 stained human HeLa cells. The cells were PFA fixed (10 min), permeabilised in TBS-T (20 min) and incubated with the antibody (ab31799, 1µg/ml) for 1h at room temperature. 1%BSA / 10% normal goat serum / 0.3M glycine was used to quench autofluorescence and block non-specific protein-protein interactions. The secondary antibody (green) was Alexa Fluor® 488 goat anti-rabbit IgG (H+L) used at a 1/1000 dilution for 1h. Alexa Fluor® 594 WGA was used to label plasma membranes (red). DAPI was used to stain the cell nuclei (blue).

**Please note:** All products are "FOR RESEARCH USE ONLY. NOT FOR USE IN DIAGNOSTIC PROCEDURES"

**Our Abpromise to you: Quality guaranteed and expert technical support**

- Replacement or refund for products not performing as stated on the datasheet
- Valid for 12 months from date of delivery
- Response to your inquiry within 24 hours
- We provide support in Chinese, English, French, German, Japanese and Spanish
- Extensive multi-media technical resources to help you
- We investigate all quality concerns to ensure our products perform to the highest standards

If the product does not perform as described on this datasheet, we will offer a refund or replacement. For full details of the Abpromise, please visit <https://www.abcam.cn/abpromise> or contact our technical team.

#### **Terms and conditions**

---

- Guarantee only valid for products bought direct from Abcam or one of our authorized distributors