


Anti-ERCC1 antibody ab69398

2 图像

概述

产品名称	Anti-ERCC1抗体
描述	兔多克隆抗体to ERCC1
宿主	Rabbit
经测试应用	适用于: WB
种属反应性	与反应: Mouse, Human 预测可用于: Hamster, Cow 
免疫原	Synthetic peptide corresponding to Human ERCC1 aa 250 to the C-terminus (C terminal) conjugated to keyhole limpet haemocyanin. (Peptide available as ab93790)
阳性对照	This antibody gave a positive signal mouse kidney tissue lysate and in the following whole cell lysates: HeLa; Jurkat.
常规说明	<p>The Life Science industry has been in the grips of a reproducibility crisis for a number of years. Abcam is leading the way in addressing this with our range of recombinant monoclonal antibodies and knockout edited cell lines for gold-standard validation. Please check that this product meets your needs before purchasing.</p> <p>If you have any questions, special requirements or concerns, please send us an inquiry and/or contact our Support team ahead of purchase. Recommended alternatives for this product can be found below, along with publications, customer reviews and Q&As</p>

性能

形式	Liquid
存放说明	Shipped at 4°C. Store at +4°C short term (1-2 weeks). Upon delivery aliquot. Store at -20°C or -80°C. Avoid freeze / thaw cycle.
存储溶液	pH: 7.40 Preservative: 0.02% Sodium azide Constituent: PBS
	Batches of this product that have a concentration < 1mg/ml may have BSA added as a stabilising agent. If you would like information about the formulation of a specific lot, please contact our scientific support team who will be happy to help.

纯度	Immunogen affinity purified
克隆	多克隆
同种型	IgG

应用

The Abpromise guarantee **Abpromise™**承诺保证使用ab69398于以下的经测试应用

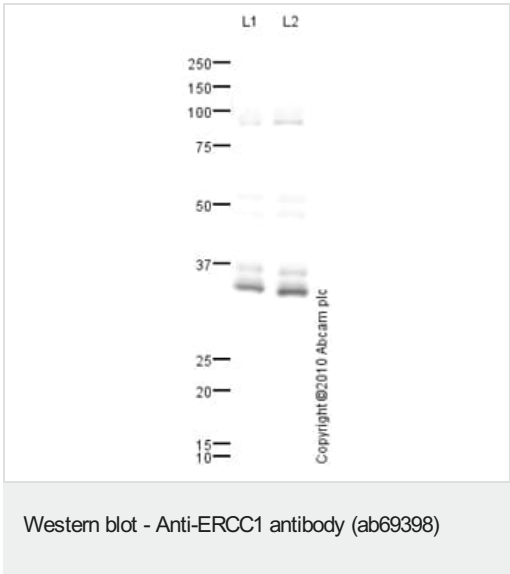
“应用说明”部分 下显示的仅为推荐的起始稀释度;实际最佳的稀释度/浓度应由使用者检定。

应用	Ab评论	说明
WB		Use a concentration of 1 µg/ml. Detects a band of approximately 32 kDa (predicted molecular weight: 32 kDa). Not yet tested in other applications. Optimal dilutions/concentrations should be determined by the end user.

靶标

功能	Structure-specific DNA repair endonuclease responsible for the 5'-incision during DNA repair.
疾病相关	Defects in ERCC1 are the cause of cerebro-oculo-facio-skeletal syndrome type 4 (COFS4) [MIM:610758]. COFS is a degenerative autosomal recessive disorder of prenatal onset affecting the brain, eye and spinal cord. After birth, it leads to brain atrophy, hypoplasia of the corpus callosum, hypotonia, cataracts, microcornea, optic atrophy, progressive joint contractures and growth failure. Facial dysmorphism is a constant feature. Abnormalities of the skull, eyes, limbs, heart and kidney also occur.
序列相似性	Belongs to the ERCC1/RAD10/SWI10 family.
细胞定位	Nucleus.

图片



All lanes : Anti-ERCC1 antibody (ab69398) at 1 µg/ml

Lane 1 : HeLa (Human epithelial carcinoma cell line) Whole Cell Lysate

Lane 2 : Jurkat (Human T cell lymphoblast-like cell line) Whole Cell Lysate

Lysates/proteins at 10 µg per lane.

Secondary

All lanes : Goat polyclonal to Rabbit IgG - H&L - Pre-Adsorbed (HRP) at 1/3000 dilution

Developed using the ECL technique.

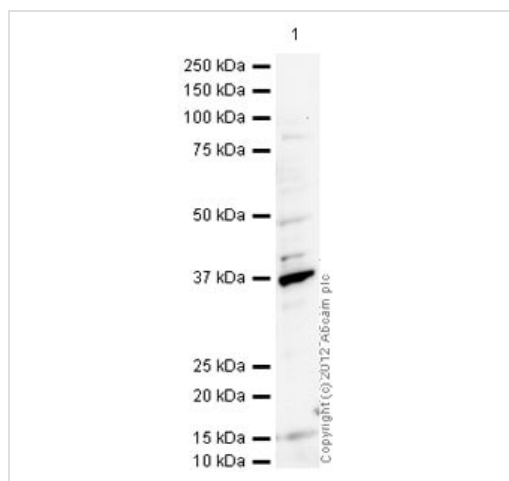
Performed under reducing conditions.

Predicted band size: 32 kDa

Observed band size: 32 kDa

Additional bands at: 36 kDa, 55 kDa, 90 kDa. We are unsure as to the identity of these extra bands.

Exposure time: 10 minutes



Western blot - Anti-ERCC1 antibody (ab69398)

Anti-ERCC1 antibody (ab69398) at 1 µg/ml + Kidney (Mouse)

Tissue Lysate at 10 µg

Secondary

Goat Anti-Rabbit IgG H&L (HRP) preadsorbed ([ab97080](#)) at 1/5000 dilution

Developed using the ECL technique.

Performed under reducing conditions.

Predicted band size: 32 kDa

Observed band size: 36 kDa

Exposure time: 20 minutes

Please note: All products are "FOR RESEARCH USE ONLY. NOT FOR USE IN DIAGNOSTIC PROCEDURES"

Our Abpromise to you: Quality guaranteed and expert technical support

- Replacement or refund for products not performing as stated on the datasheet
- Valid for 12 months from date of delivery
- Response to your inquiry within 24 hours
- We provide support in Chinese, English, French, German, Japanese and Spanish
- Extensive multi-media technical resources to help you
- We investigate all quality concerns to ensure our products perform to the highest standards

If the product does not perform as described on this datasheet, we will offer a refund or replacement. For full details of the Abpromise, please visit <https://www.abcam.cn/abpromise> or contact our technical team.

Terms and conditions

- Guarantee only valid for products bought direct from Abcam or one of our authorized distributors